

1

2

3

4

5

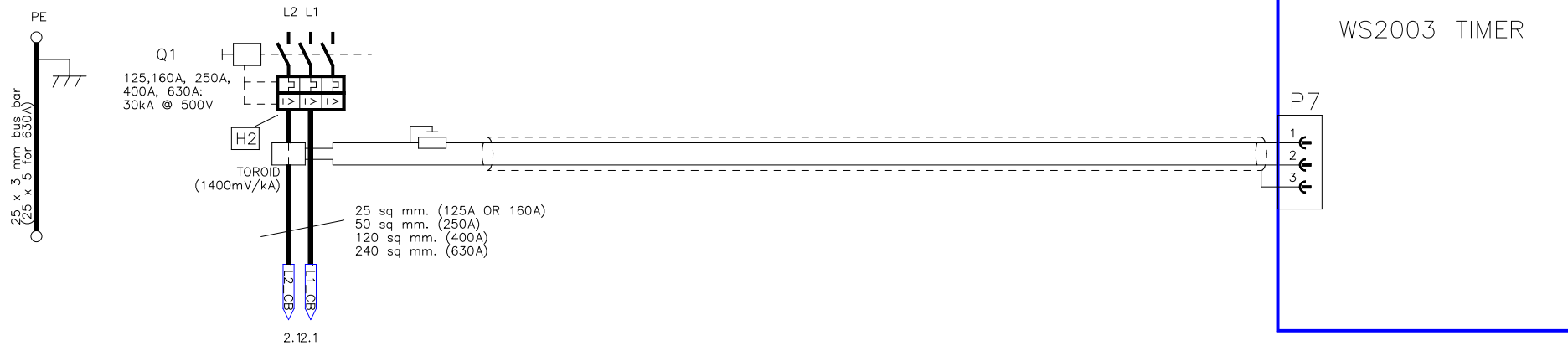
6

7

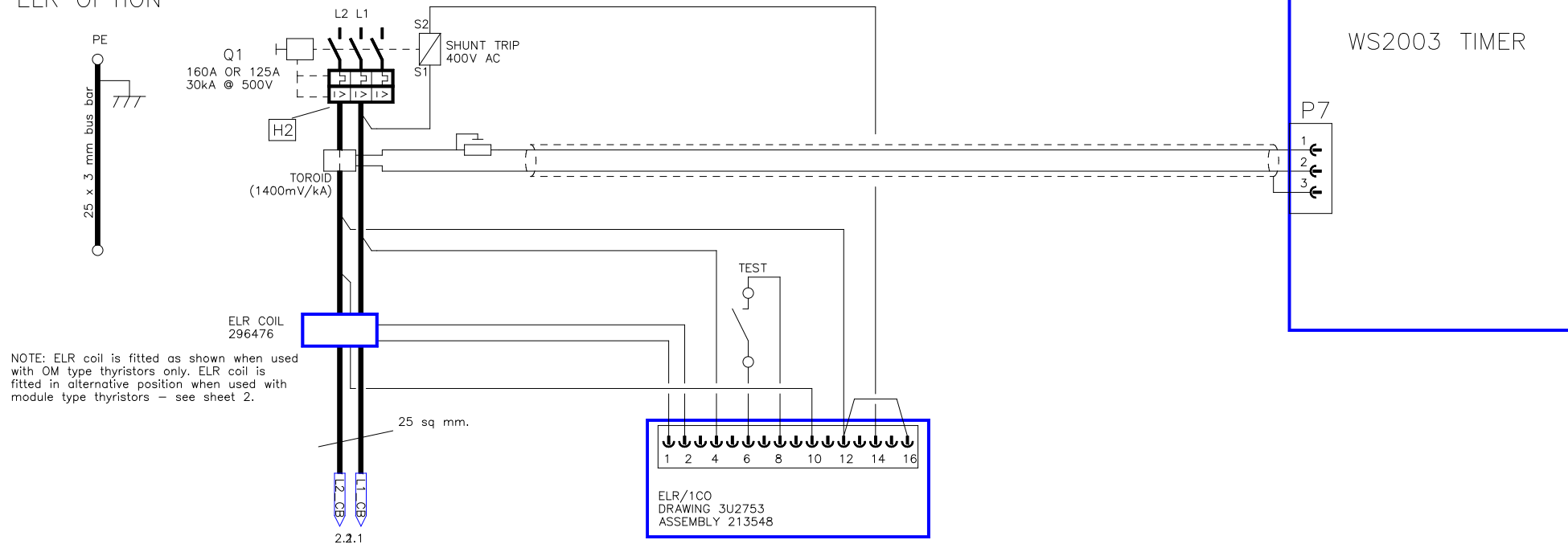
8

9

STANDARD OPTION



ELR OPTION



NOTE: ELR coil is fitted as shown when used with OM type thyristors only. ELR coil is fitted in alternative position when used with module type thyristors - see sheet 2.

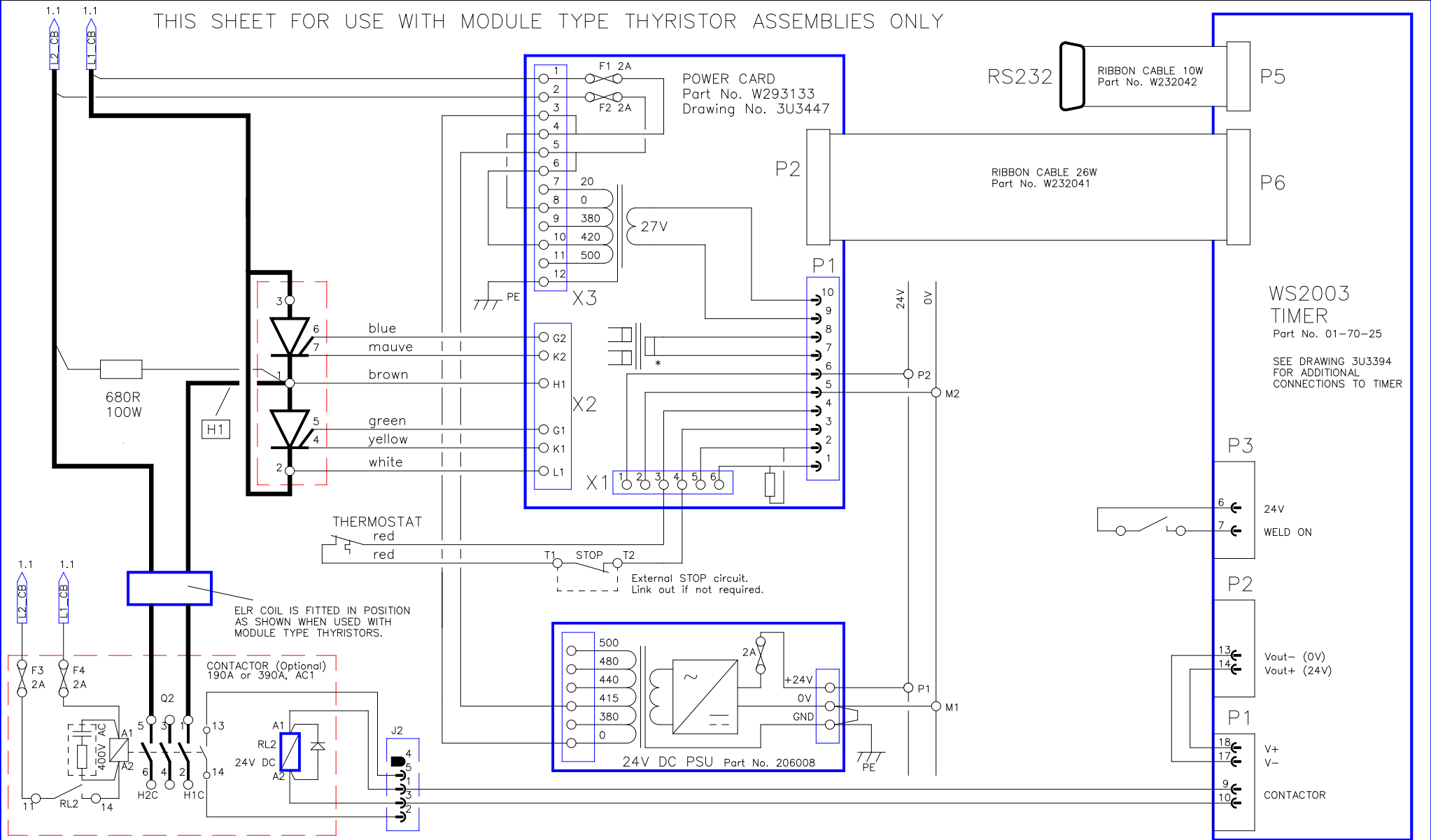
DATE:	2-3-10
DRAWN:	K.C.
CHECKED:	

BF ENTRON LTD

TITLE: WS2003 OM CASE

DRAWING No:	3U3450
ISSUE No:	5
SHEET No:	1 of 4

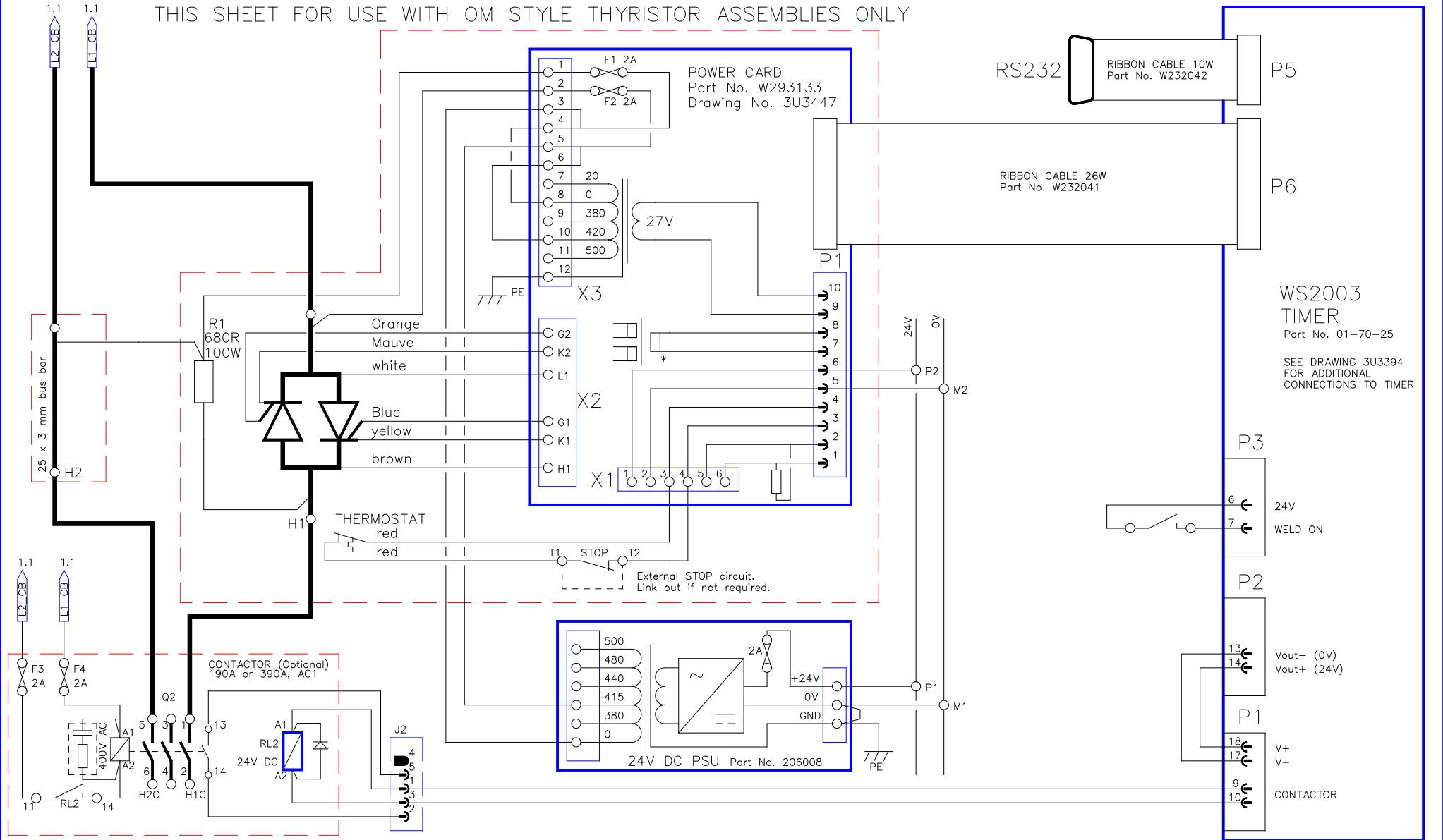
THIS SHEET FOR USE WITH MODULE TYPE THYRISTOR ASSEMBLIES ONLY



All wiring 1mm sq., unless shown otherwise.

DATE:	2-3-10	BF ENTRON LTD	TITLE:	WS2003 OM CASE	DRAWING No:	3U3450
DRAWN:	K.C.		ISSUE No:	5	SHEET No:	2 of 4
CHECKED:						

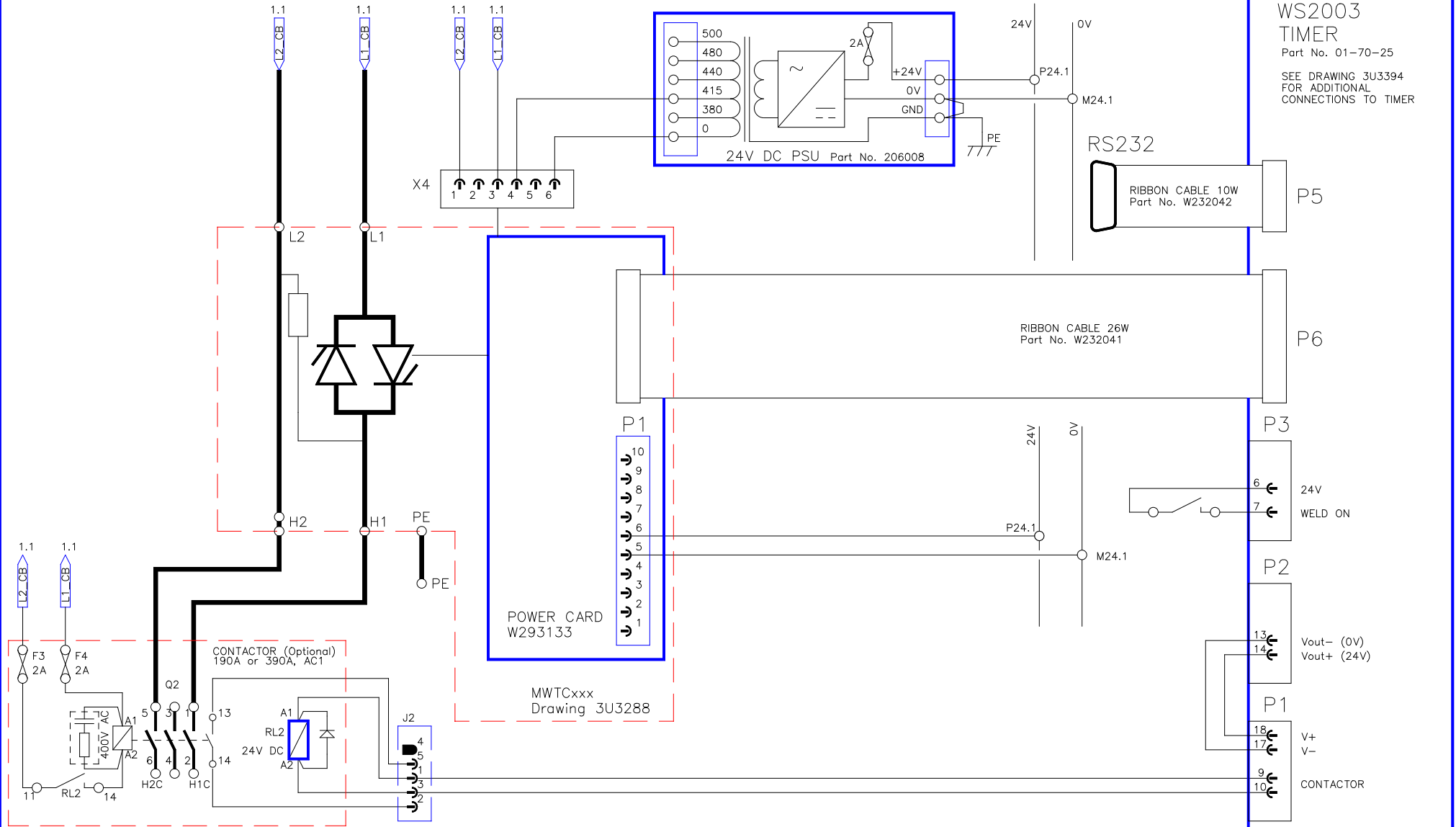
THIS SHEET FOR USE WITH OM STYLE THYRISTOR ASSEMBLIES ONLY



All wiring 1mm sq. , unless shown otherwise.

DATE:	2-3-10	BF ENTRON LTD	TITLE:	WS2003 OM CASE	DRAWING No:	3U3450
DRAWN:	K.C.		ISSUE No:	5	SHEET No:	3 of 4
CHECKED:						

THIS SHEET FOR USE WITH MWTCXXX STYLE THYRISTOR ASSEMBLIES ONLY



All wiring 1mm sq. , unless shown otherwise.

DATE:	2-3-10	BF ENTRON LTD	TITLE:	WS2003 OM CASE	DRAWING No:	3U3450
DRAWN:	K.C.		ISSUE No:	5	SHEET No:	4 of 4
CHECKED:						