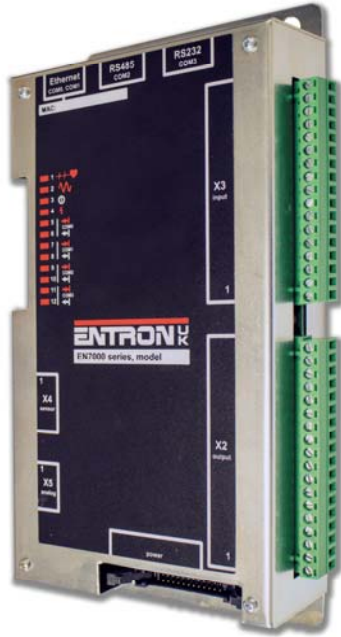


SINGLE PHASE AC and 3-PHASE DC constant current control and proportional force control for 50/60 Hz spot, projection and seam welding applications.

One control, two formats:

- Without touch-screen display
- With touch-screen display



EN7000

- Gear plate mount / Remote mount.
- Pendant , Modbus , NetFlash programming.



Example: Complete EN7000 system.

FEATURES

- 256 weld programs (schedules).
- 3 weld Intervals — Pre-heat + Main weld + Post heat.
- Cascade / multivalve operation.
- Up to 8 SCR and 8 main valve (WAV) outputs.
- 7 auxiliary valves under program control.
- 16 Inputs/ 16 Outputs (short circuit protected). Dedicated function.
- Secondary or Primary current regulation.
- Ethernet (2 simultaneous connections).
- RS232 Port.
- RS485 Port.
- Analog Port connects to Proportional Valve for weld force control , or can output a measured current waveform. Can also be used for direct analog control function.
- Force profiling.
- Electrode manager (Stepper functions) for up to 8 electrodes.
- Current and force monitor.
- C-Monitor checks for secondary circuit shunt or wear conditions.
- Seam mode—change programs ‘on the fly’, up to 8 MOTOR command outputs.
- Standard features mode reduces the available options for simple applications.
- Feature and programming format common with iPAK2 MFDC control.

- Ethernet/IP support via plug-in adapter option.



EN7000-TS

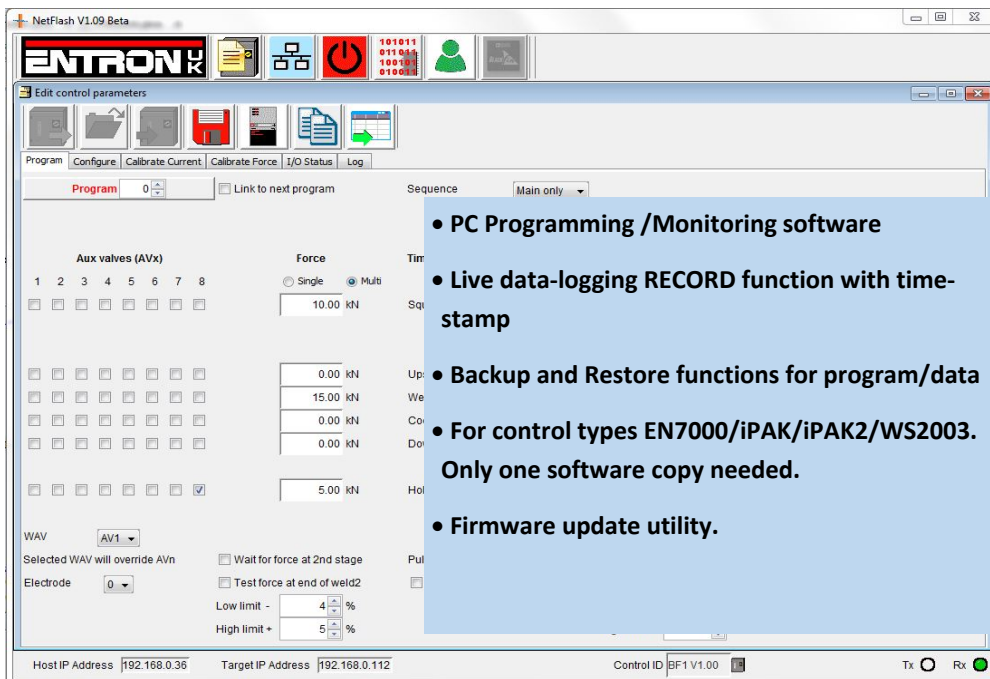
- Panel mount.
- Touch screen display, Pendant, Modbus, NetFlash programming



Example: Complete EN7000-TS system.

NetFlash PC Software for Ethernet (option)

Easy to use Networked PC. Access iPAK, iPAK2, WS2003, EN7000.



WSP3 Pendant (option)

Easy, intuitive 4 line display



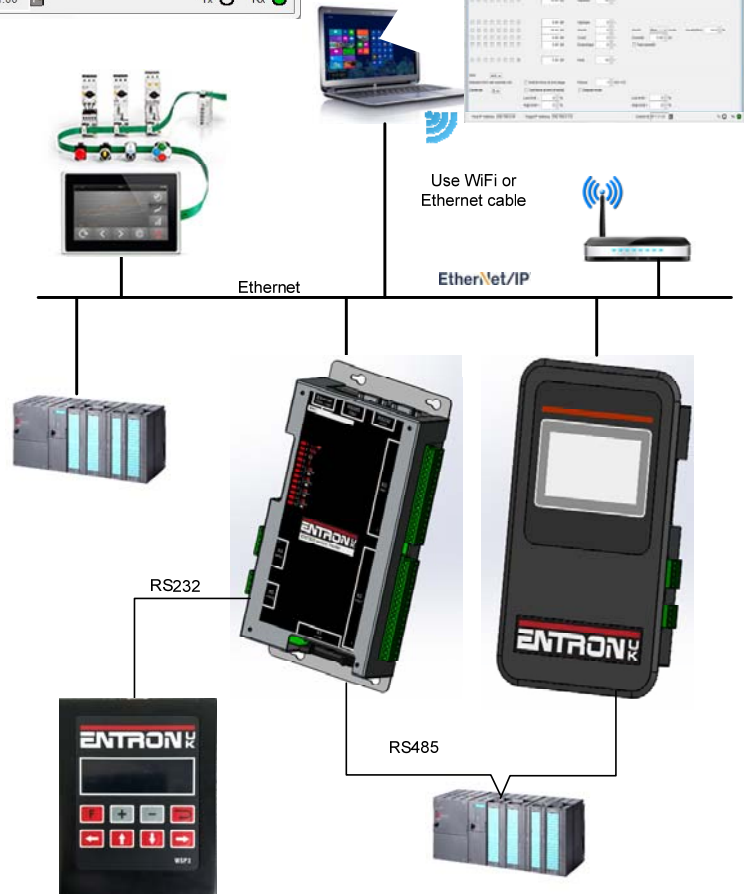
MULTIPLE COMMUNICATIONS SUPPORT :

Modbus-TCP/IP (Ethernet), Modbus-RTU (RS485), RS232 all built-in. Ethernet/IP and other Fieldbuses supported via plug-in adapter option.

MULTIPLE CONTROL METHODS: Discrete I/O, Modbus TCP/IP (Ethernet), Modbus-RTU (RS485), EtherNet/IP.

PROGRAMMING METHODS : Pendant (RS232), HMI RS485 , HMI or PC software Ethernet TCP/IP, EtherNet/IP.

DATA-LOGGING (Spot mode): Internal data-logging up to 6000 records. Data can be recorded to hard drive through NetFlash.



BF Entron Ltd. England.
Tel: +44 (0)1384 455401

Entron Controls LLC. USA.
Tel: 864-416-0190

Entron Controls De Mexico.
Tel: +52 (844) 415 9081