

CAUTION - READ MANUAL & ALL NOTES BEFORE INSTALLING OR OPERATING CONTROL. SEE NOTE 1. NO CIRCUIT CALIBRATION OR ADJUSTMENT EVER REQUIRED.

⚠ DANGER
HAZARDOUS VOLTAGE FROM ONE OR MORE SOURCES
Turn off all voltage sources before touching any components.
Electrical shock or blast will cause severe injury or death.

⚠ NOTICE
FOR SERVICE ON THIS CONTROL
Contact Your Machine Dealer Or
ENTRON CONTROLS INC.
DIRECT: (630) 682-9000
485 EAST GANDY ROAD
CAROL STREAM, IL 60188
FAX # (630) 682-3374

421210-003 J

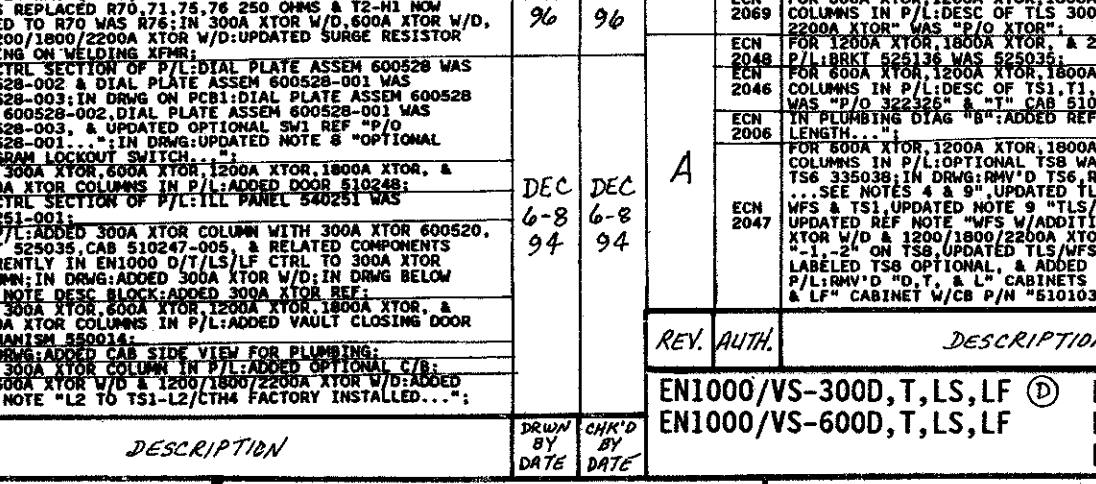
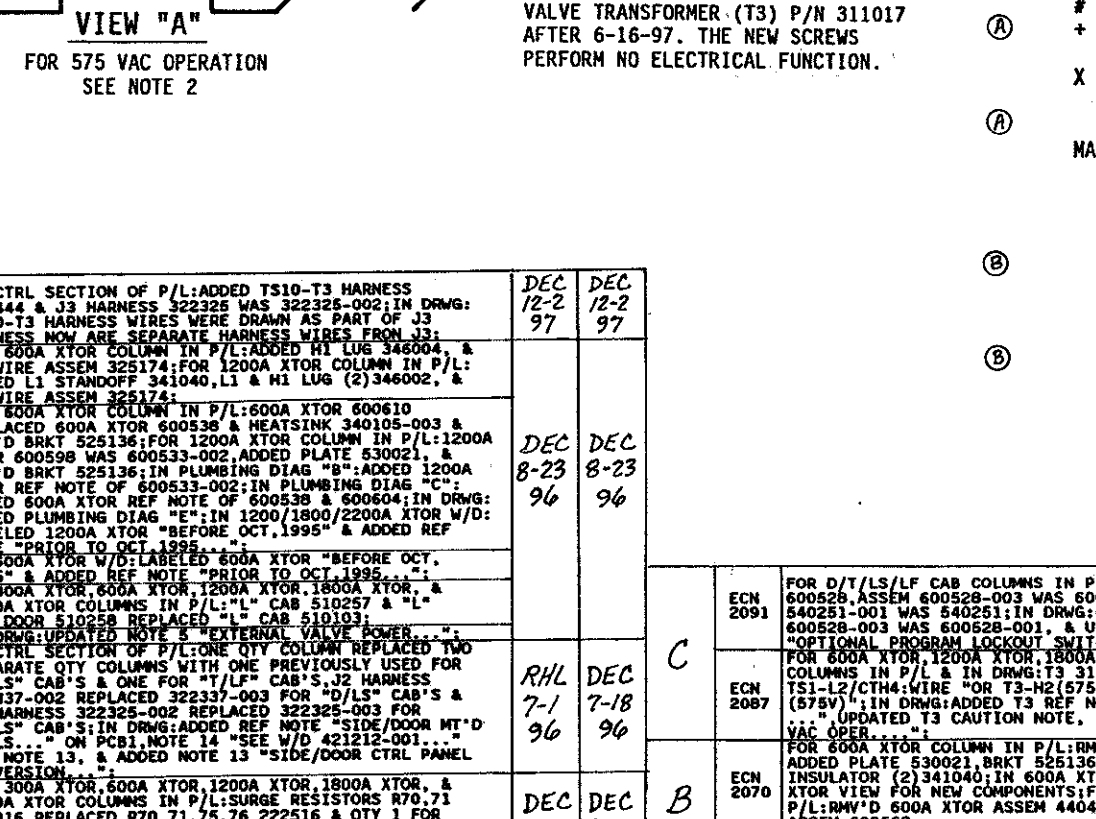
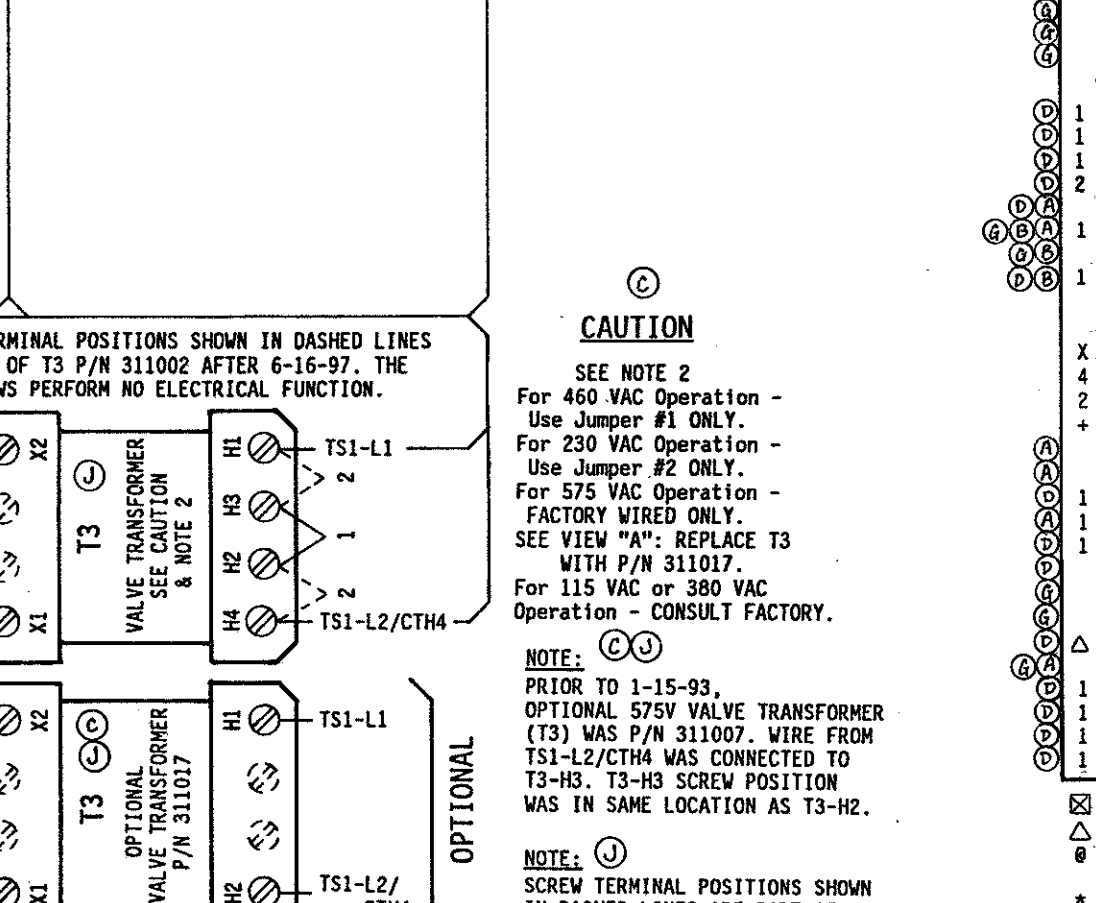
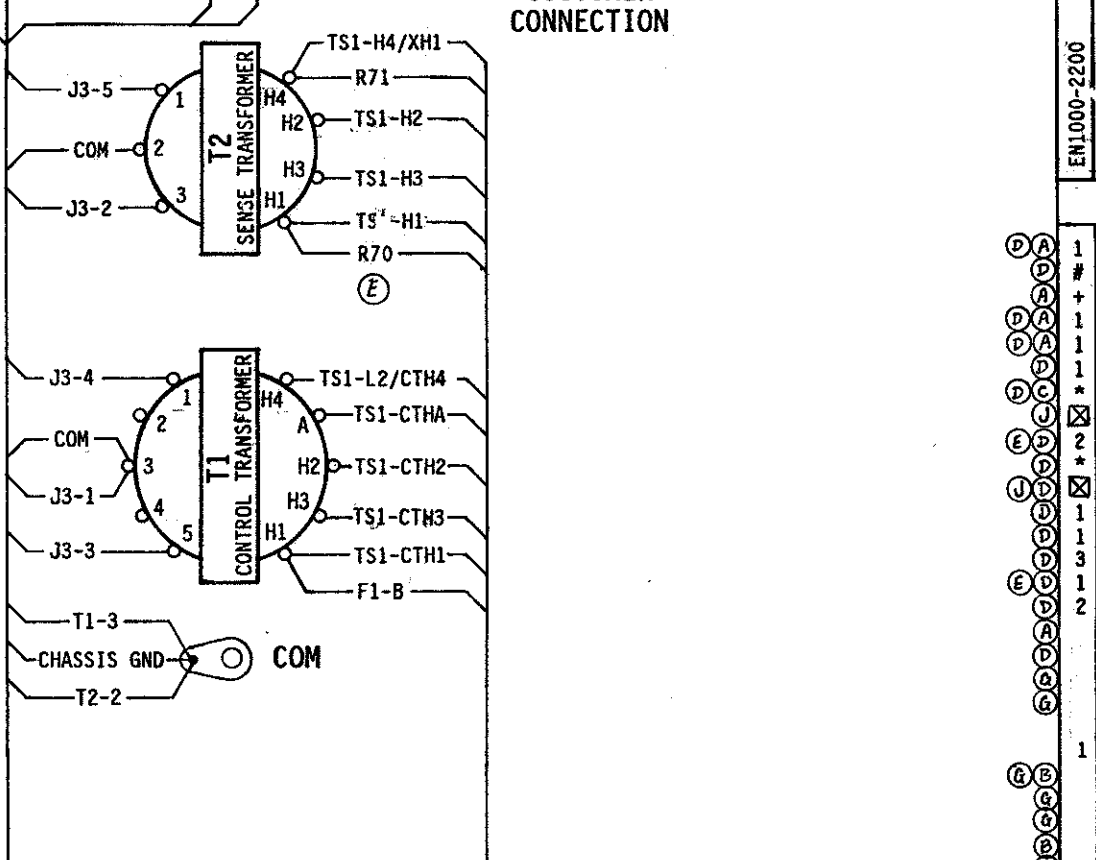
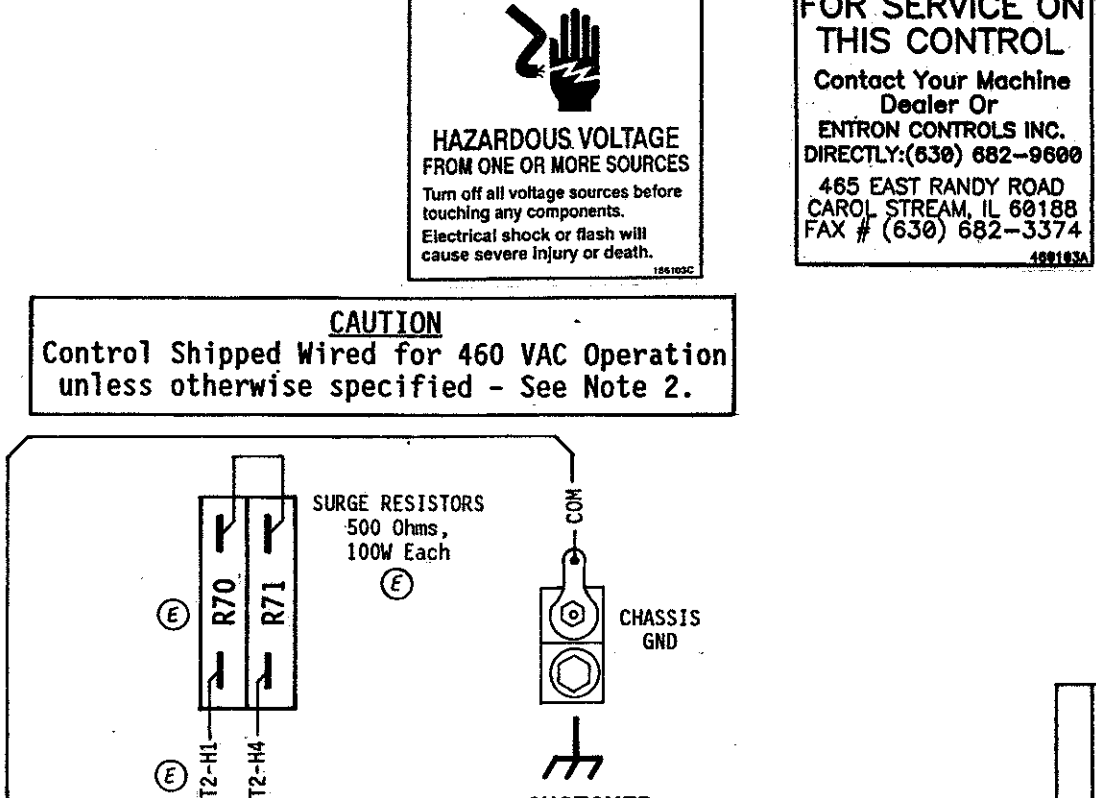
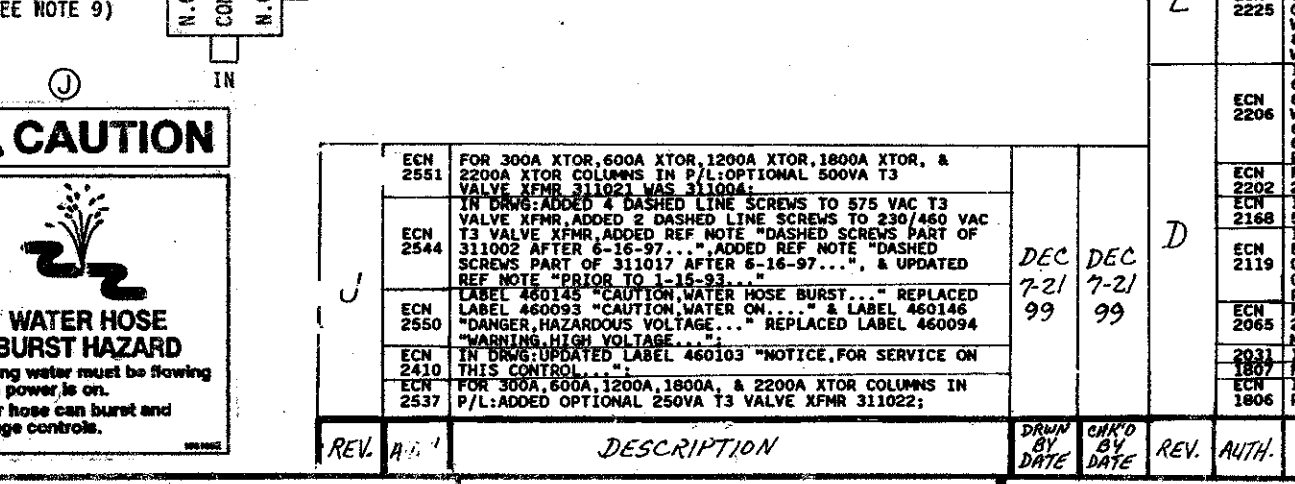
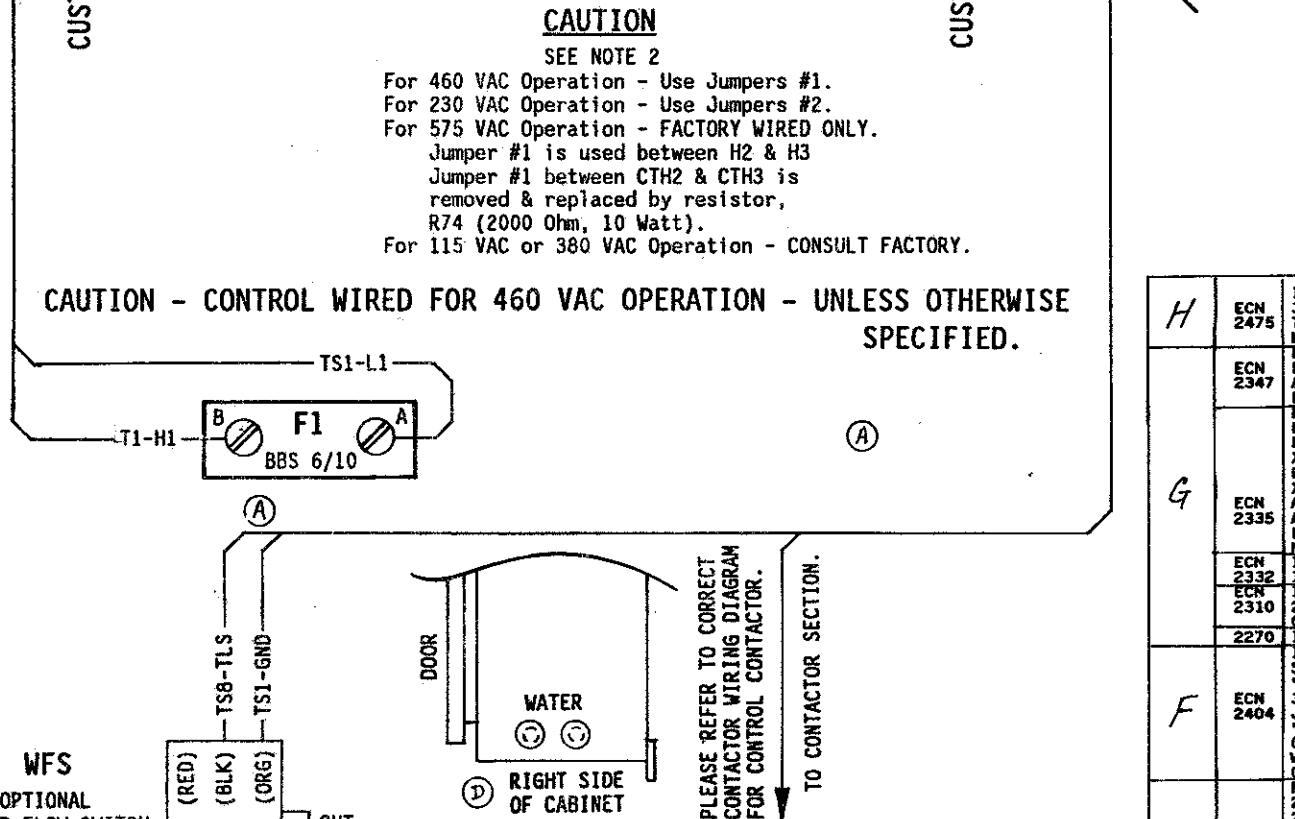
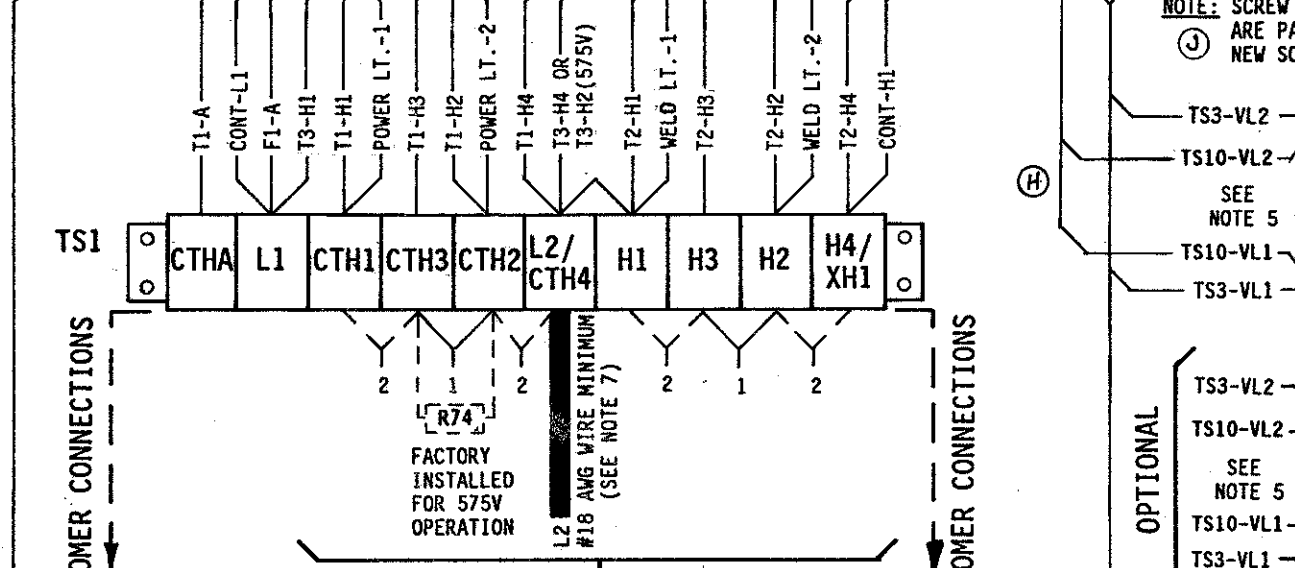
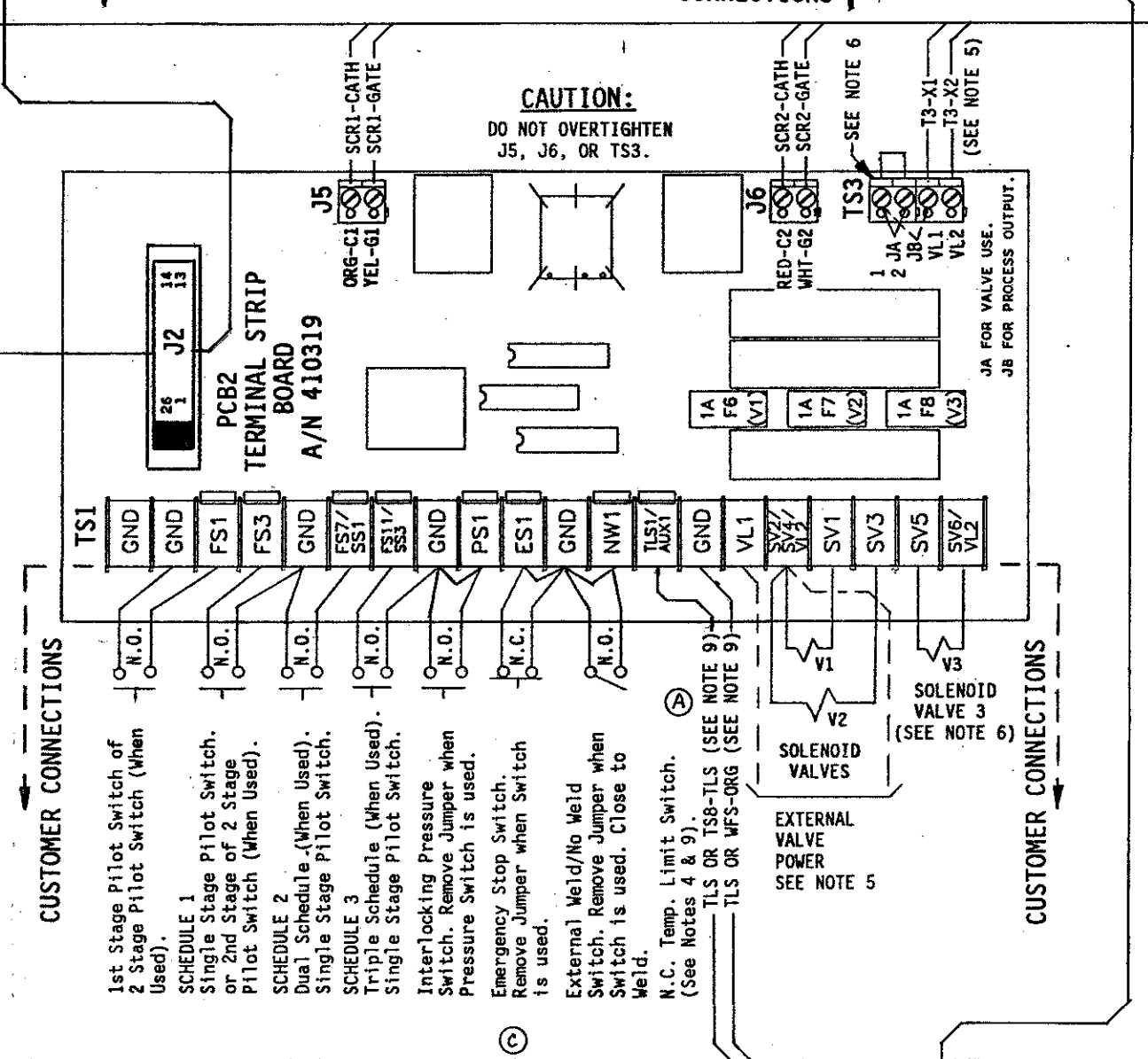
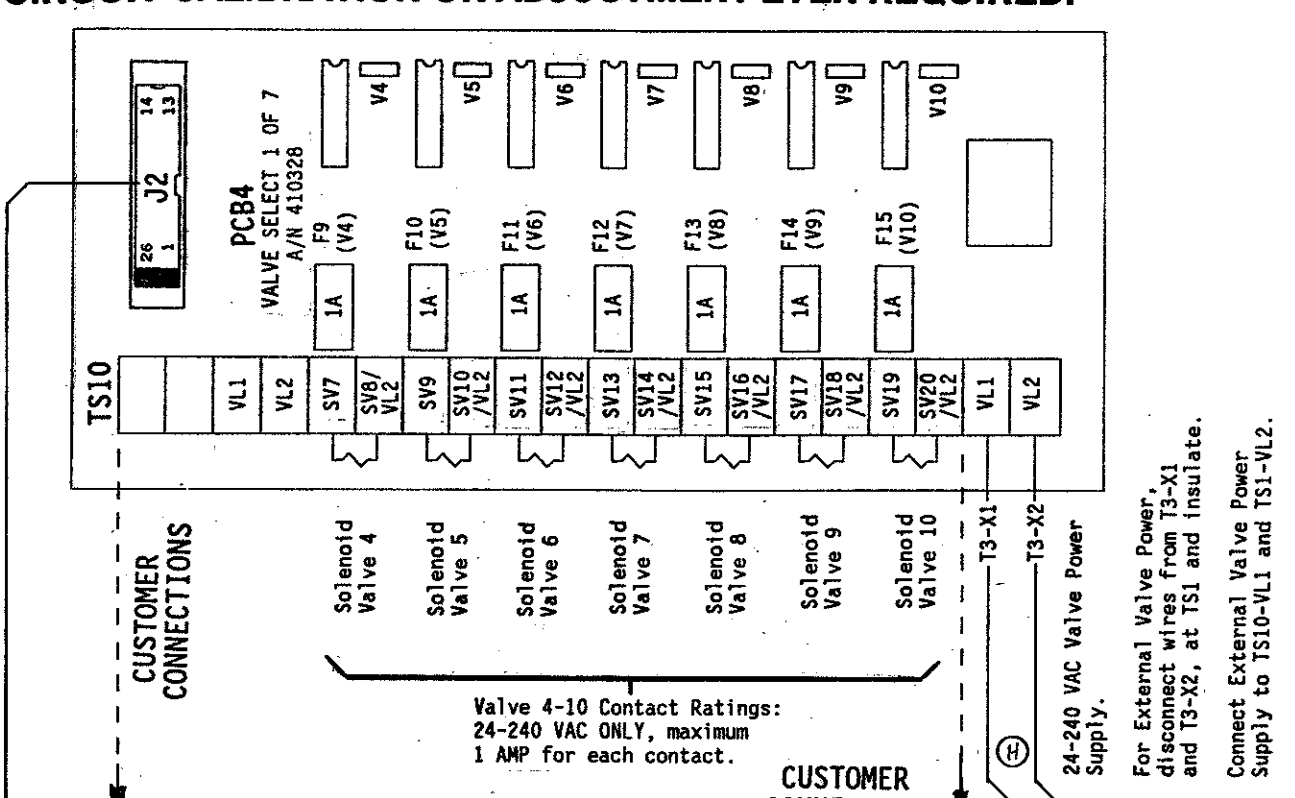
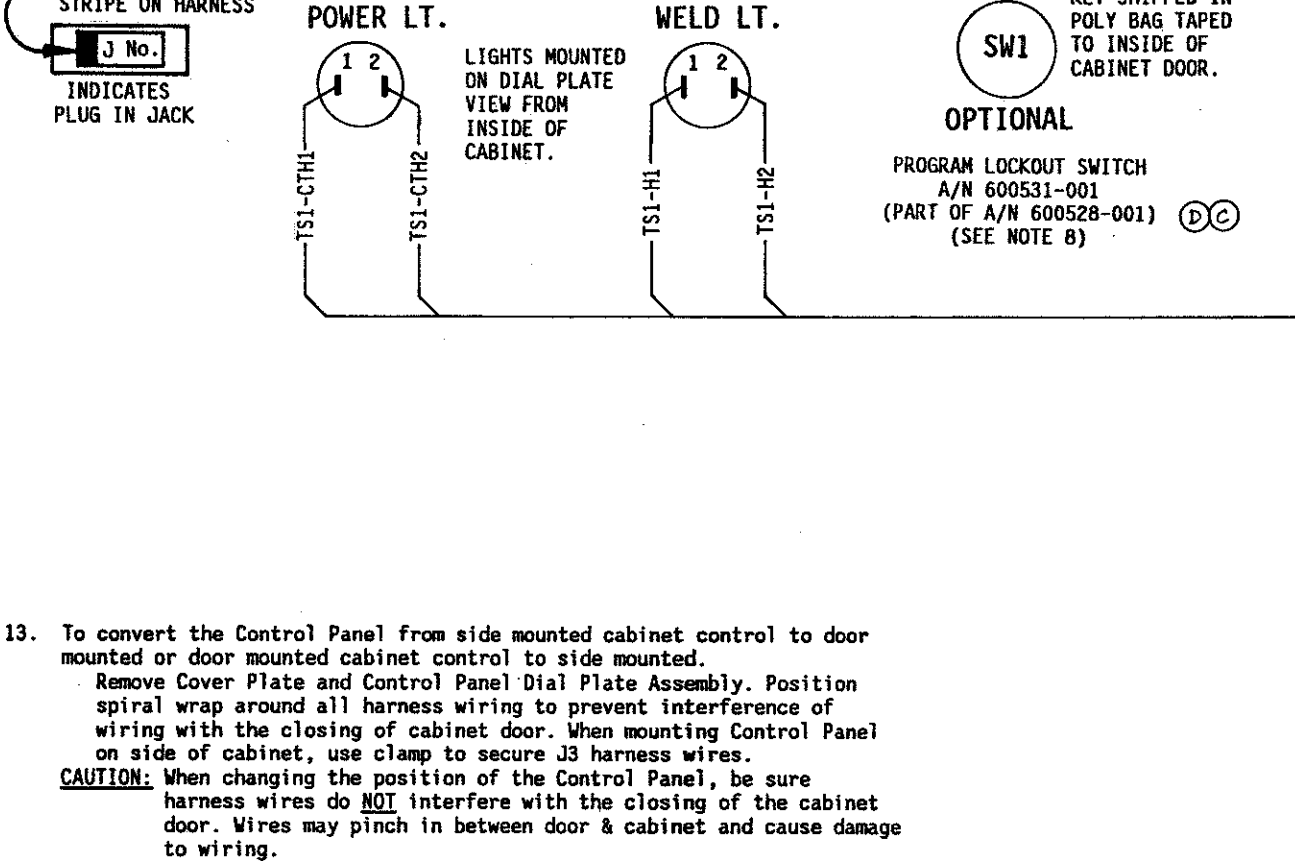
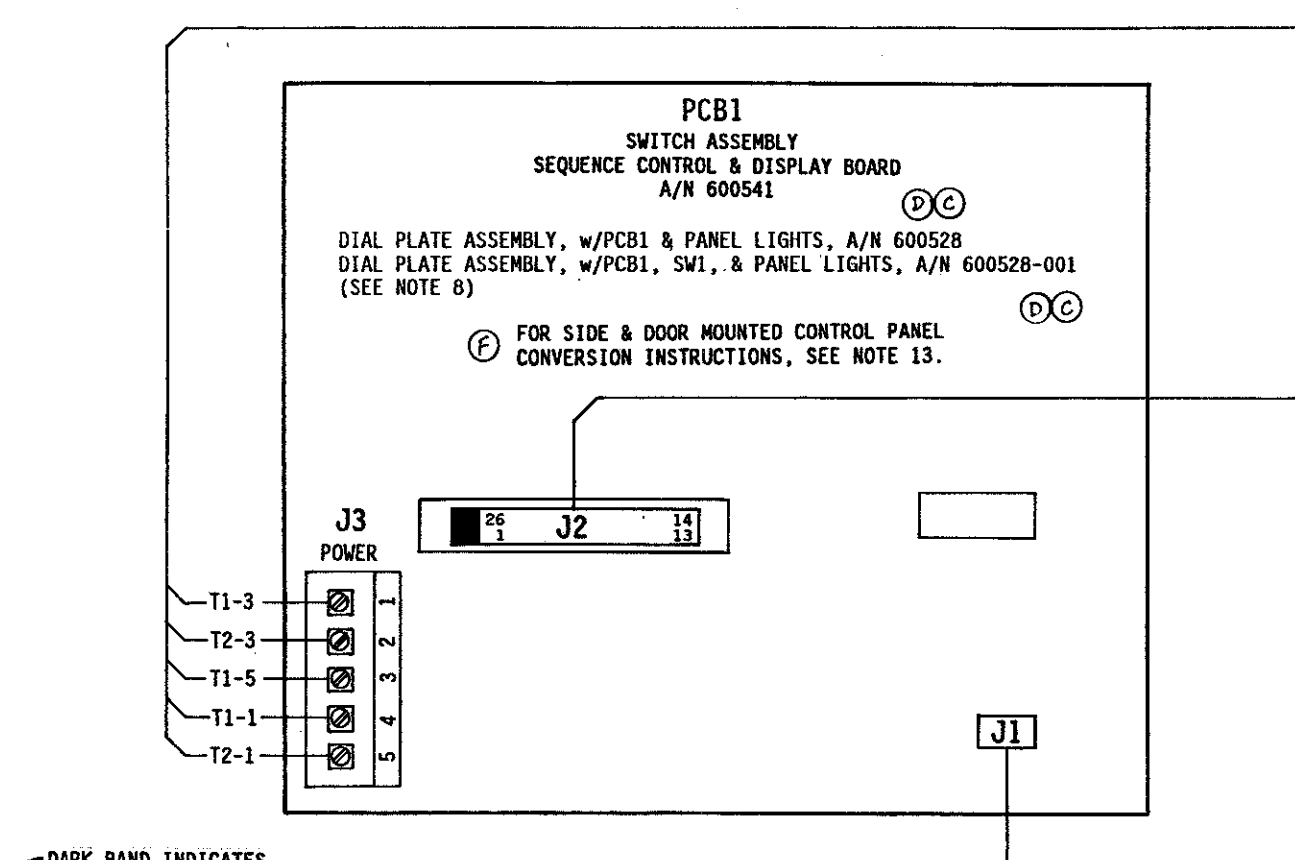
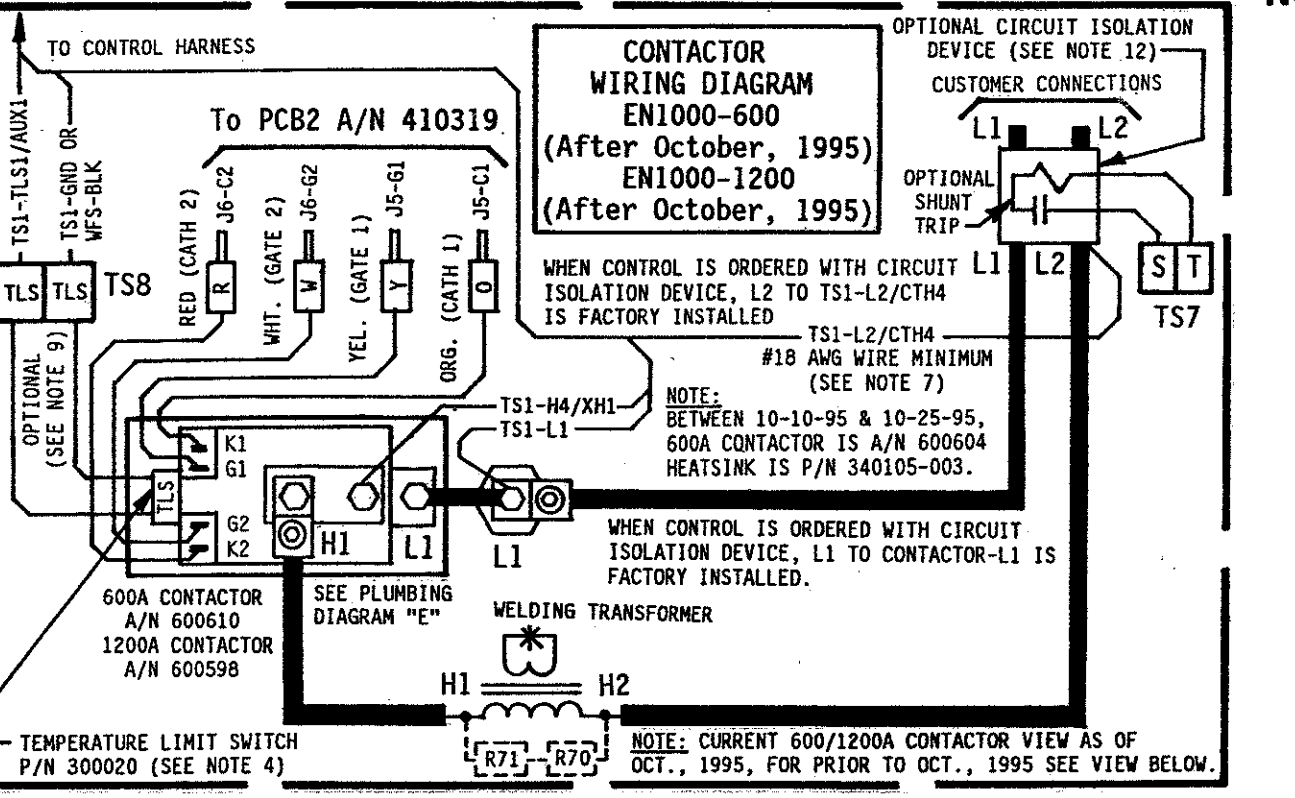
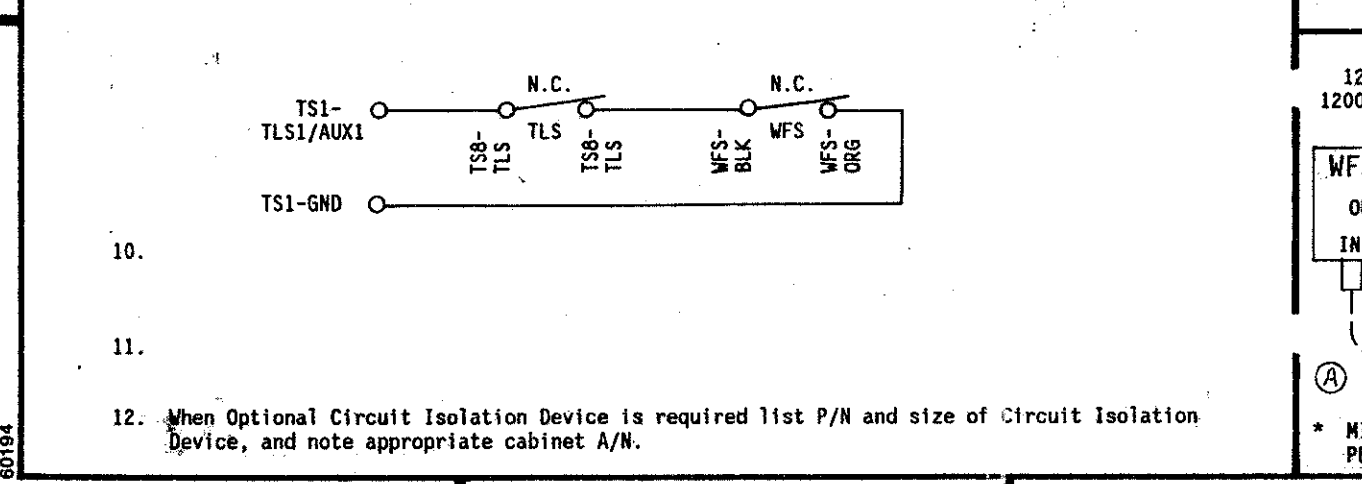
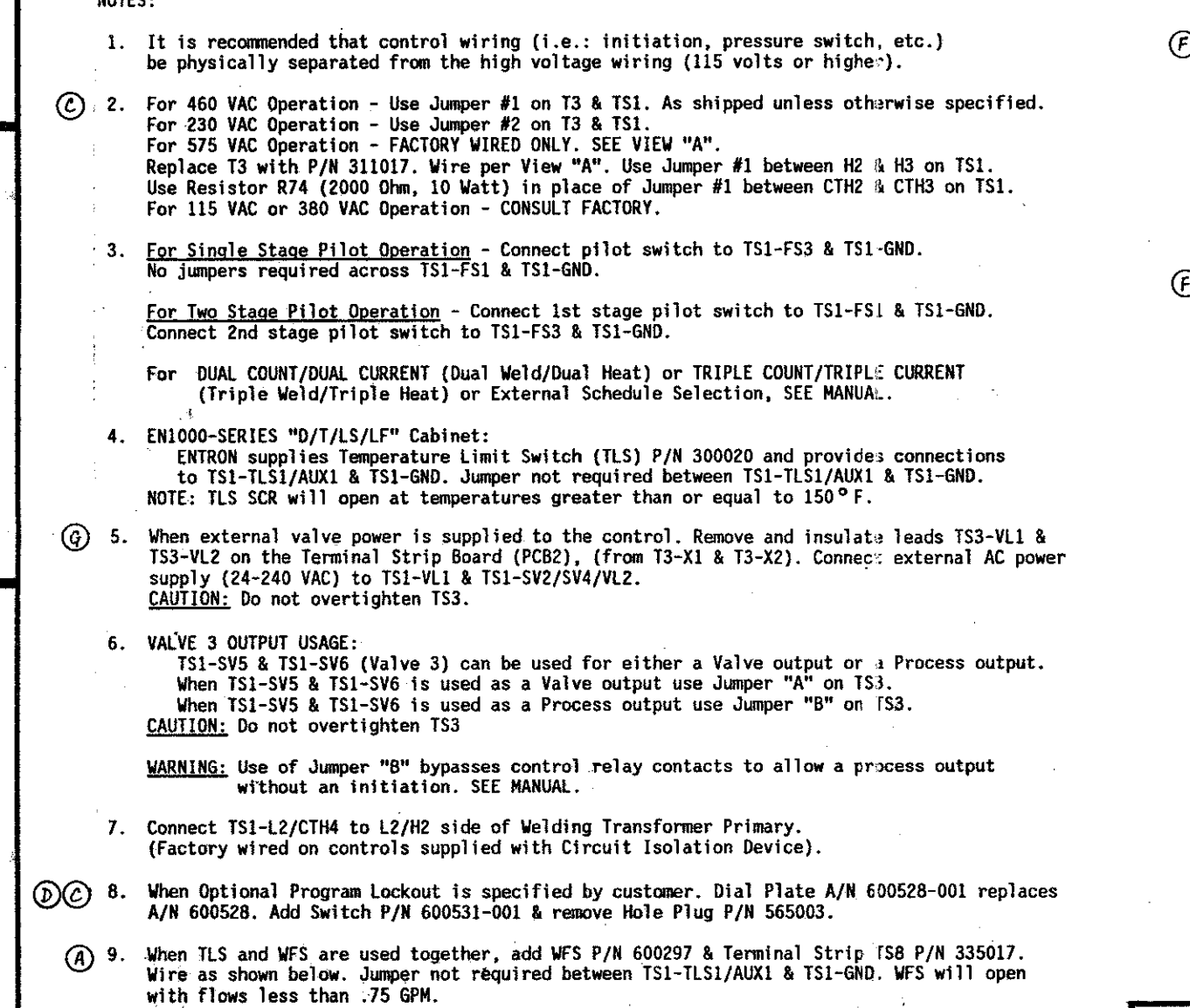
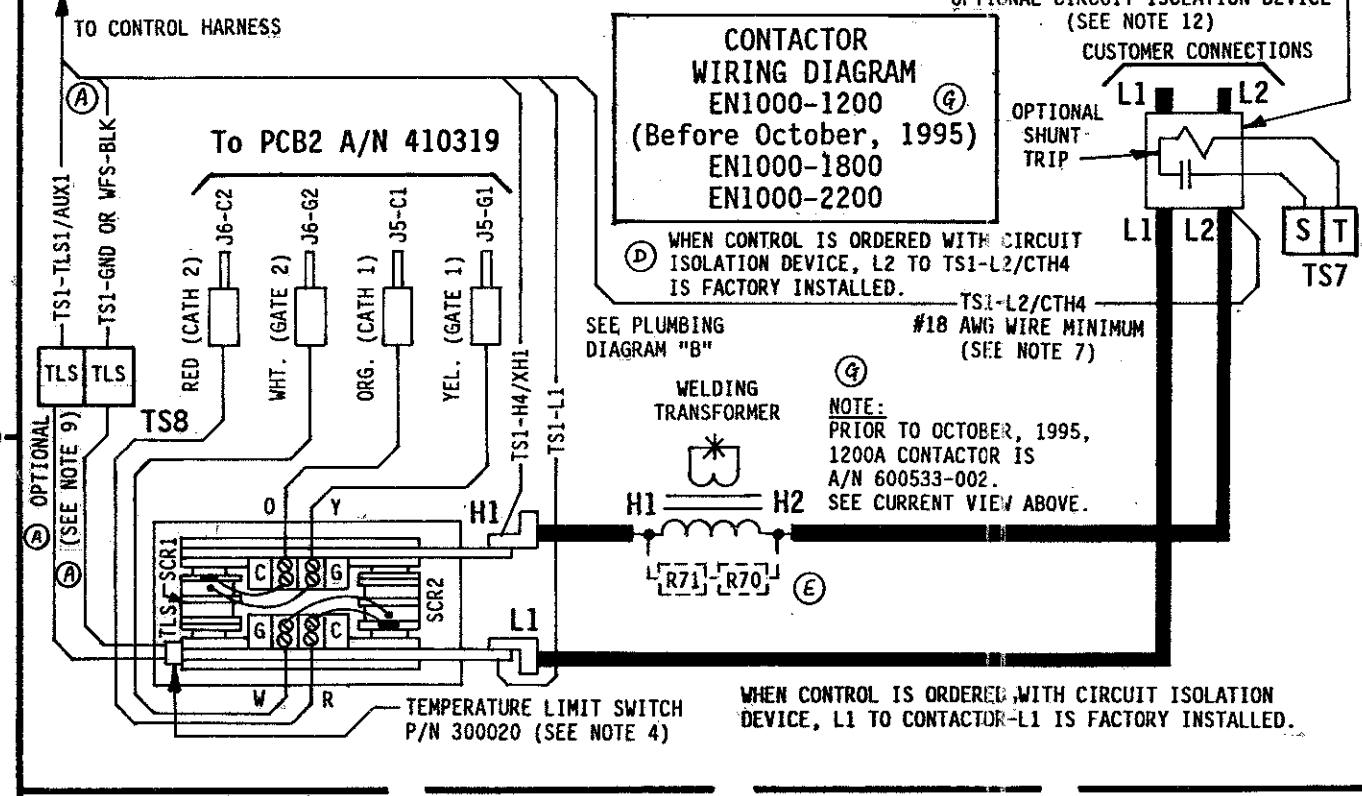
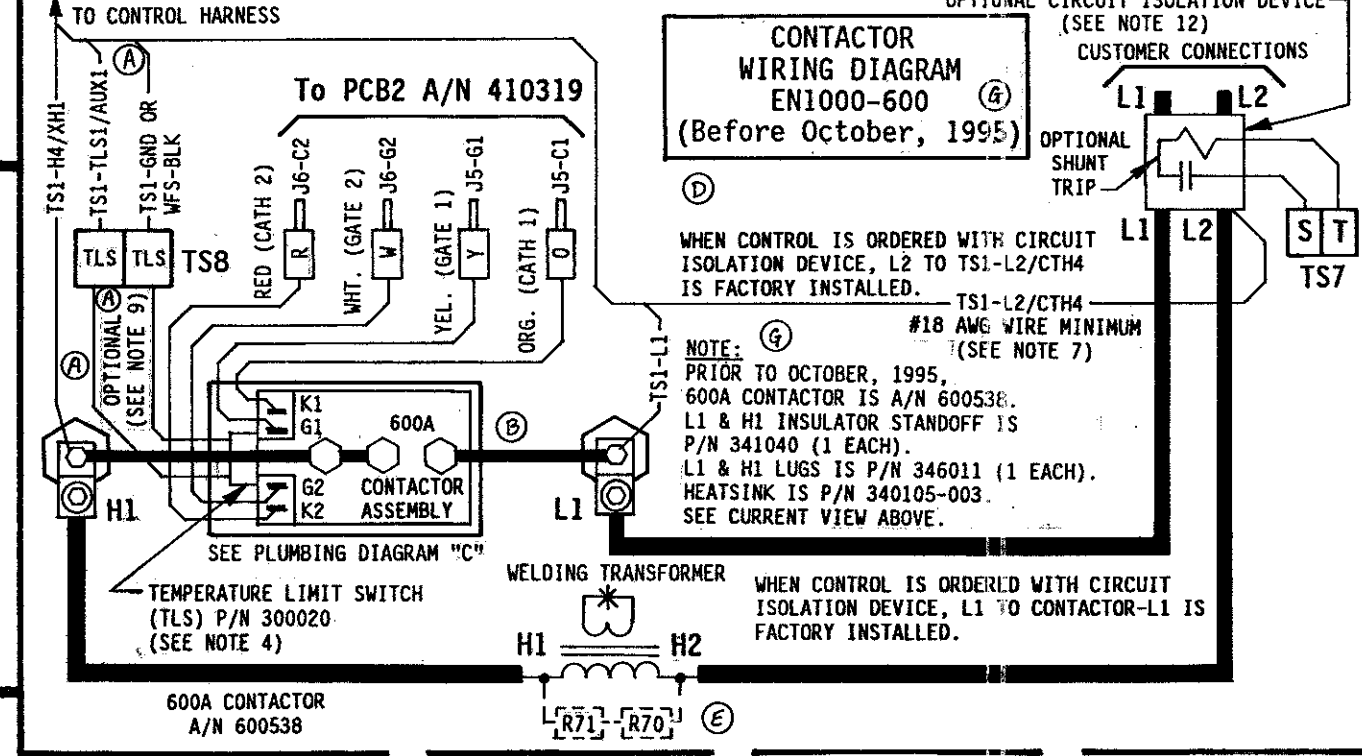
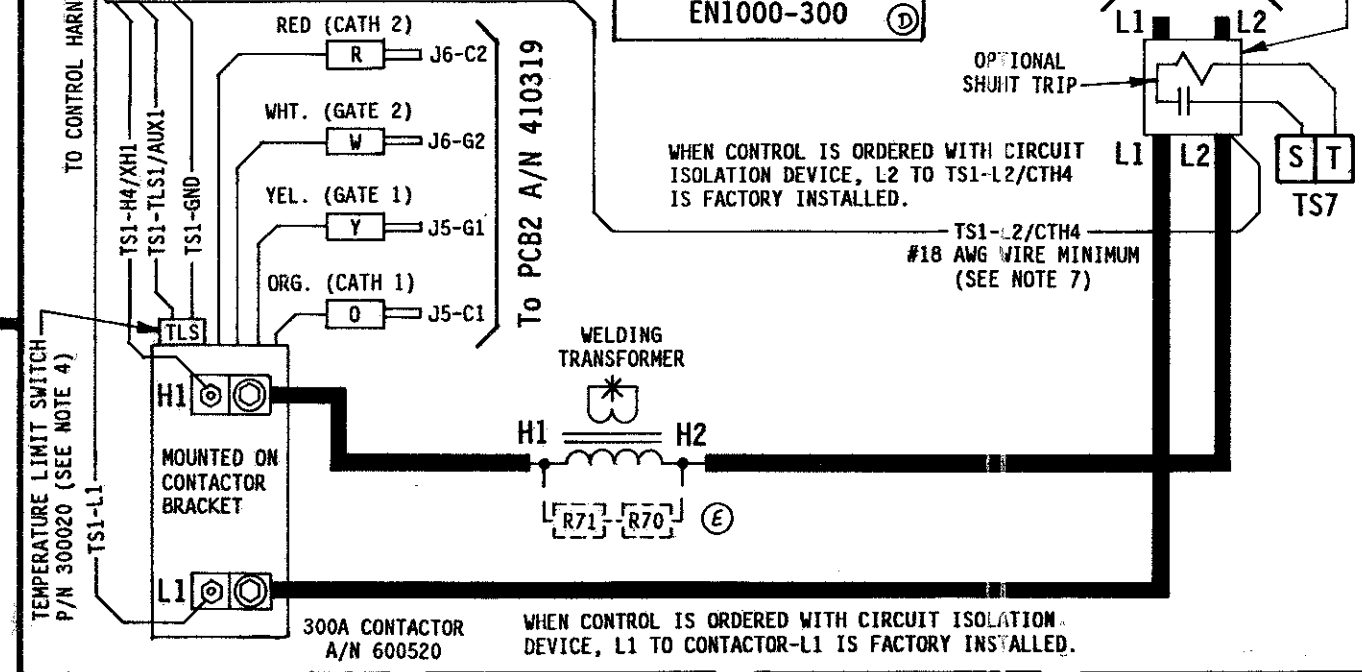


Table with columns: QTY., DESIG., PART NO., DESCRIPTION. Lists parts like dial plate assembly, transformer, and surge resistors.

Table with columns: QTY., DESIG., PART NO., DESCRIPTION. Lists parts like terminal strips, transformer, and surge resistors.

Table with columns: QTY., DESIG., PART NO., DESCRIPTION. Lists parts like surge resistors, solenoid valves, and transformer.

Table with columns: REV, AUTH, DESCRIPTION, DATE. Revision history table showing changes to the drawing.

Table with columns: SCALE, DATE, DRAWN BY, CHECK'D BY, APPROVED BY. Drawing information table.

NOTES: 1. It is recommended that control wiring... 2. For 460 VAC operation... 3. For 575 VAC operation... 4. EN1000-SERIES "D"/T/LS/LF" Cabinet... 5. When external valve power is supplied... 6. VALVE 3 OUTPUT USAGE... 7. Connect TSI-L2/CTH4... 8. When Optional Program Lockout... 9. When TLS and WFS are used together... 13. To convert the Control Panel... 14. See Wiring Diagram #421212-001... 15. See Wiring Diagram #421189-003... 16. See Wiring Diagram #421189-001... 17. See Wiring Diagram #421189-001... 18. See Wiring Diagram #421189-001... 19. See Wiring Diagram #421189-001... 20. See Wiring Diagram #421189-001...