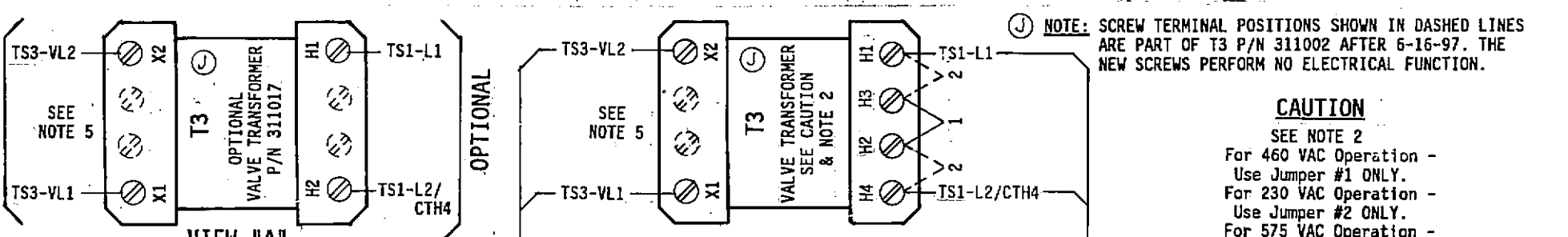


CAUTION - READ MANUAL & ALL NOTES BEFORE INSTALLING OR OPERATING CONTROL. SEE NOTE 1. NO CIRCUIT CALIBRATION OR ADJUSTMENT EVER REQUIRED.



HAZARDOUS VOLTAGE FROM ONE OR MORE SOURCES

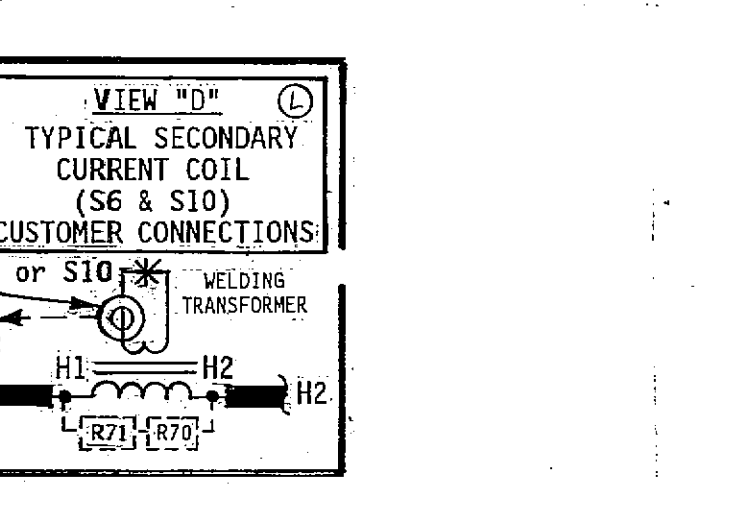
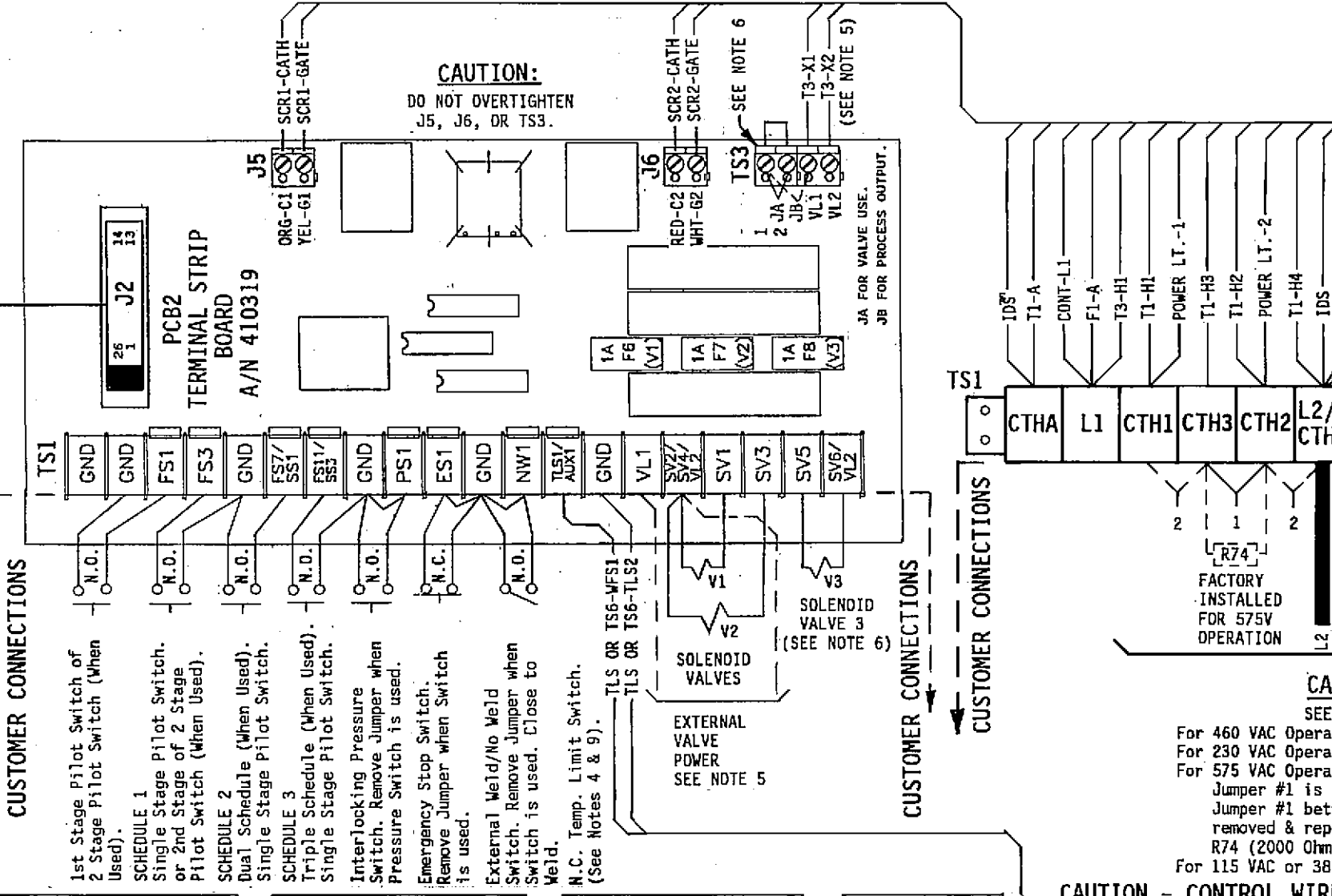
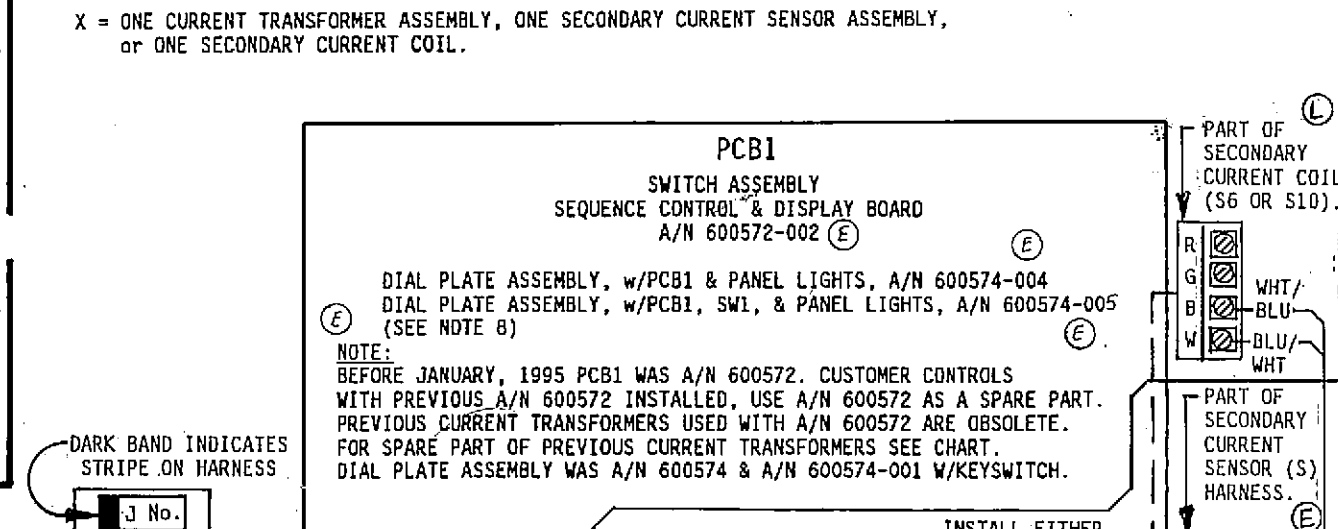
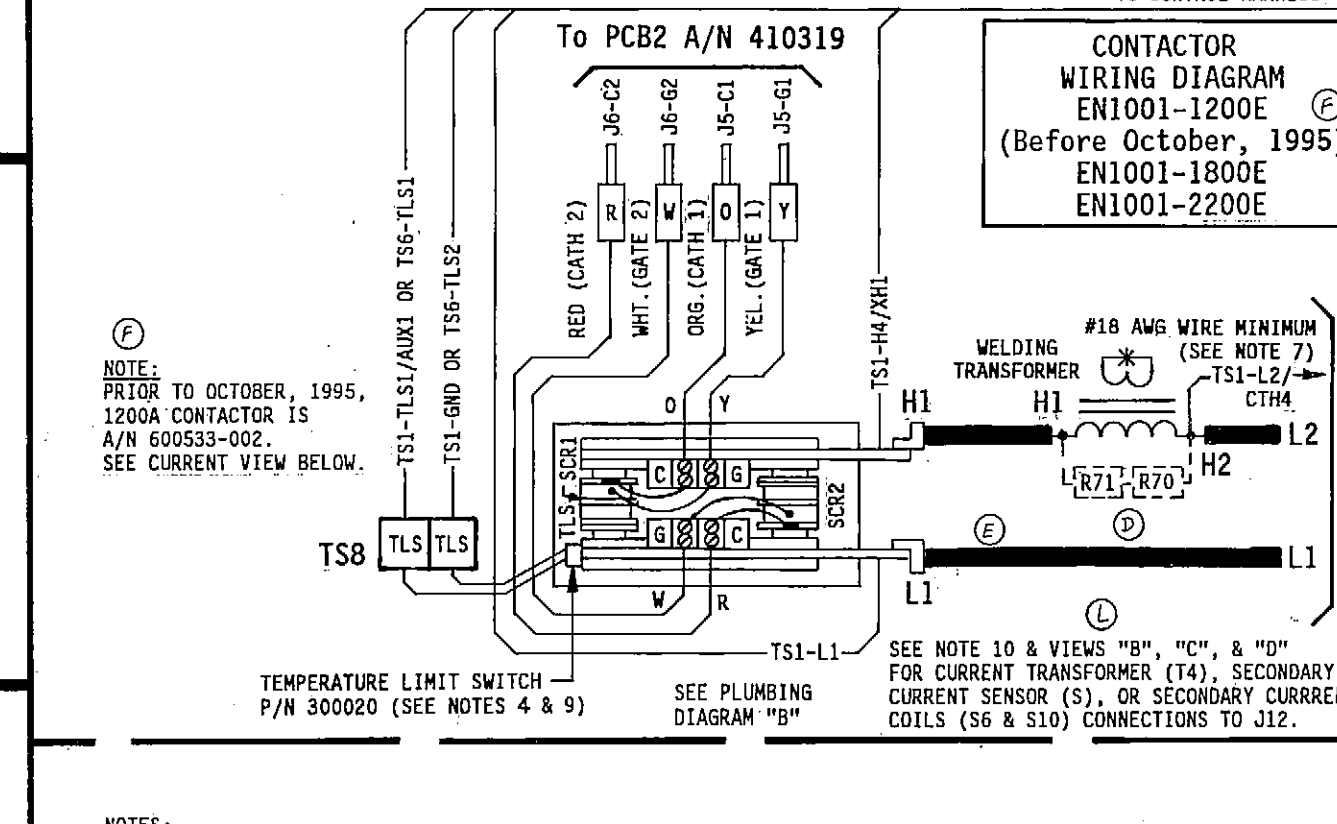
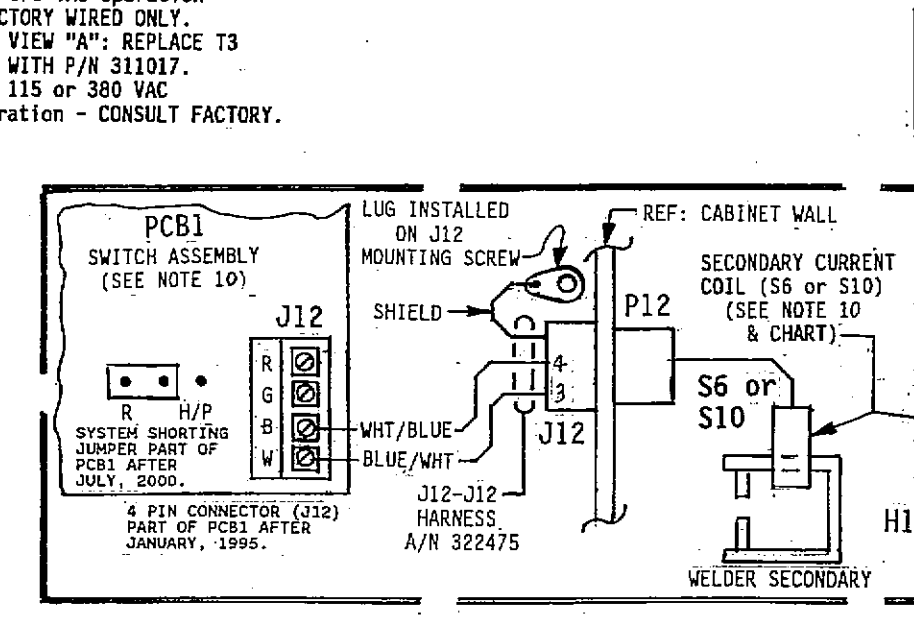
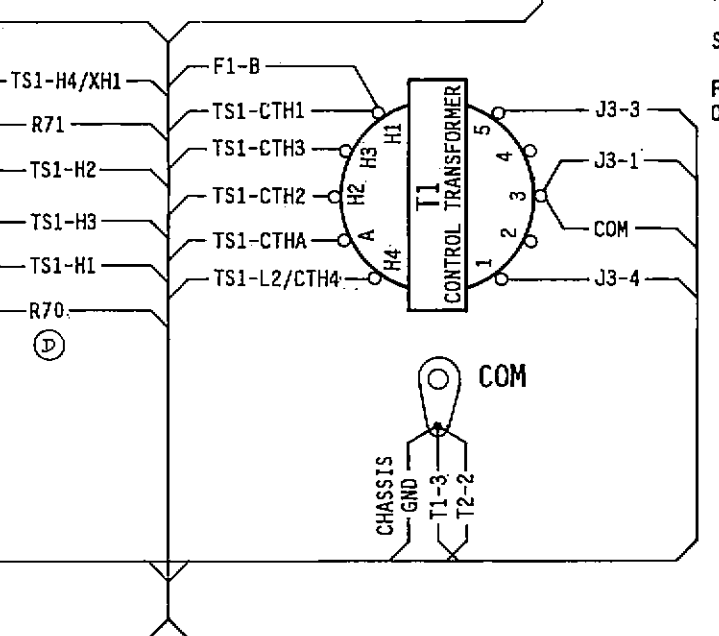
NOTICE FOR SERVICE ON THIS CONTROL

Turn off all voltage sources before touching any components. Electrical shock or flash will cause severe injury or death.

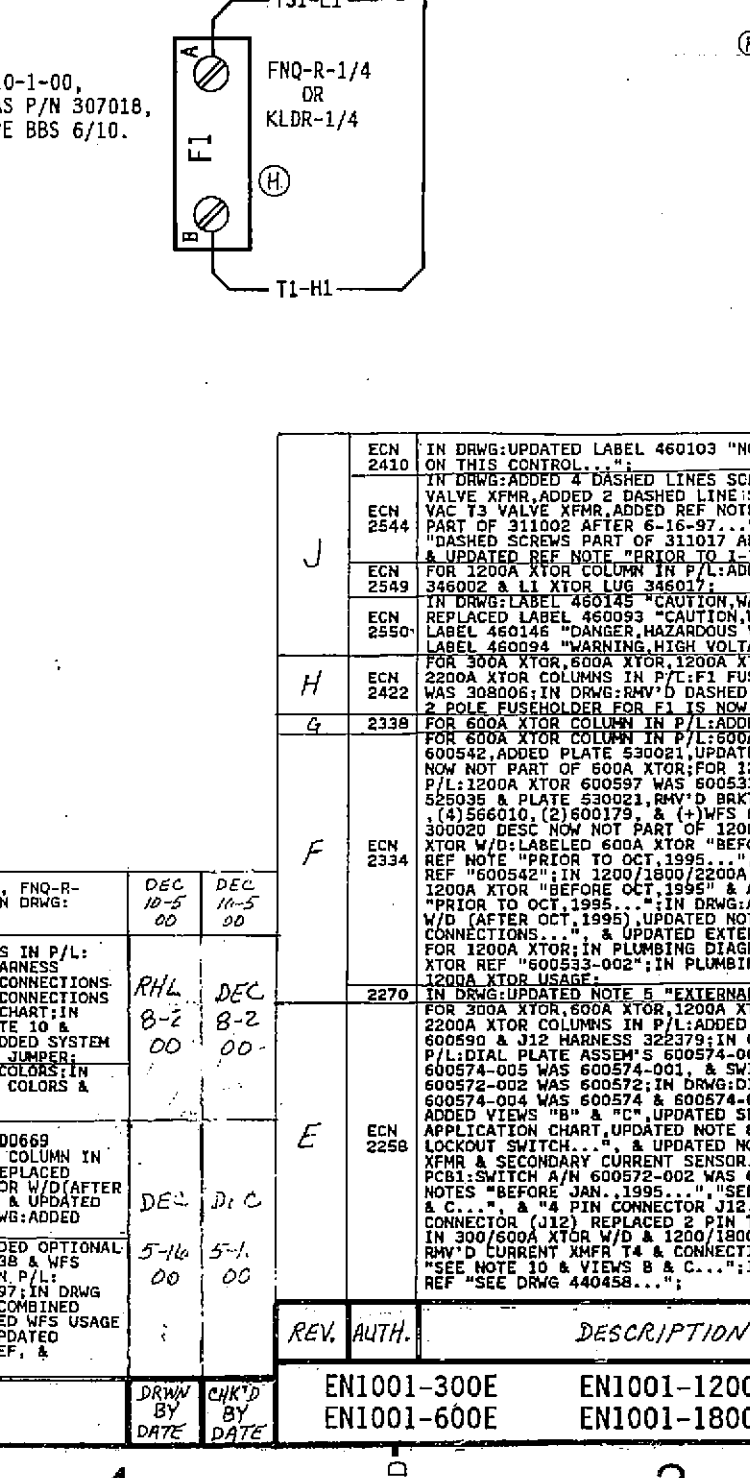
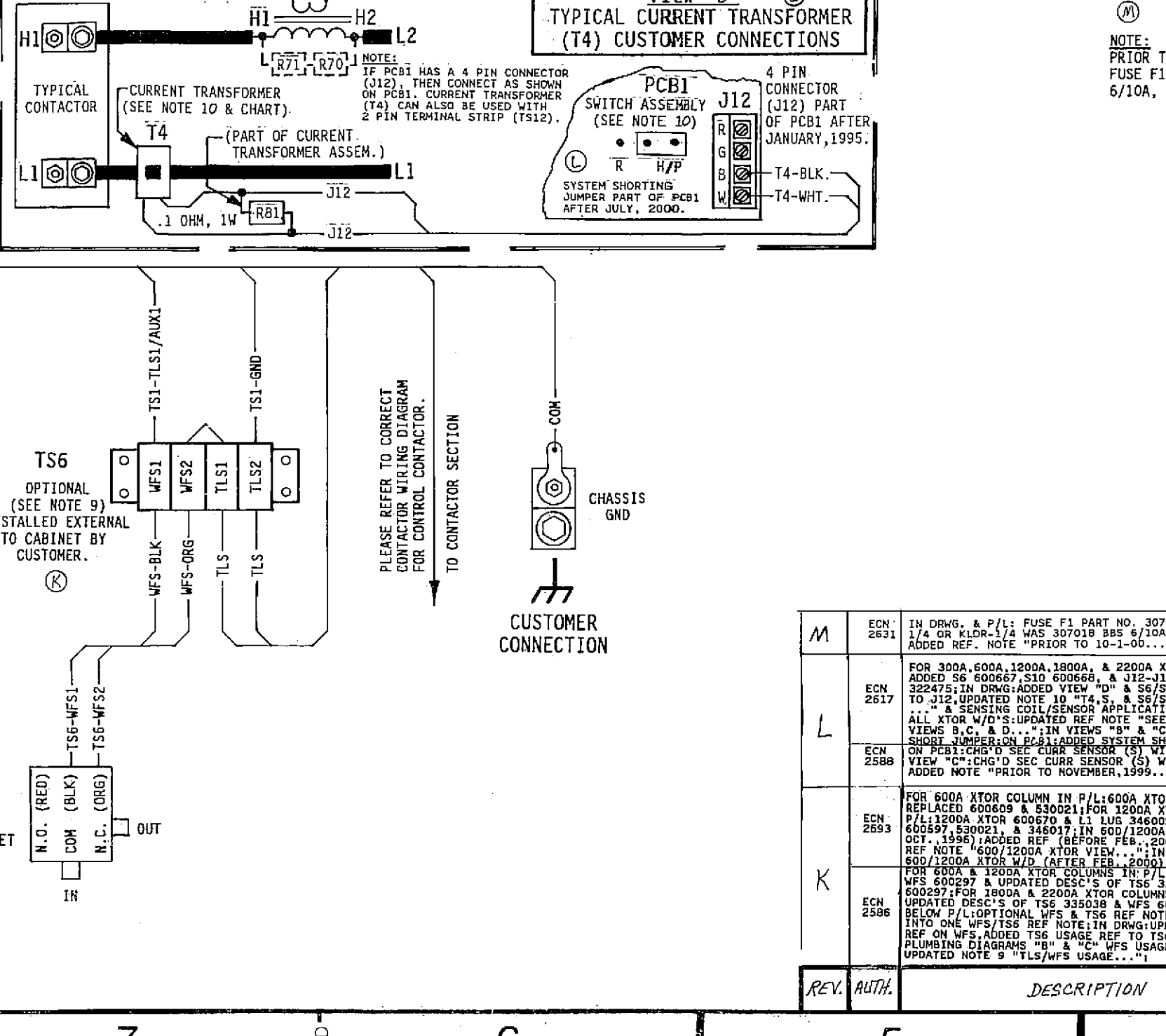
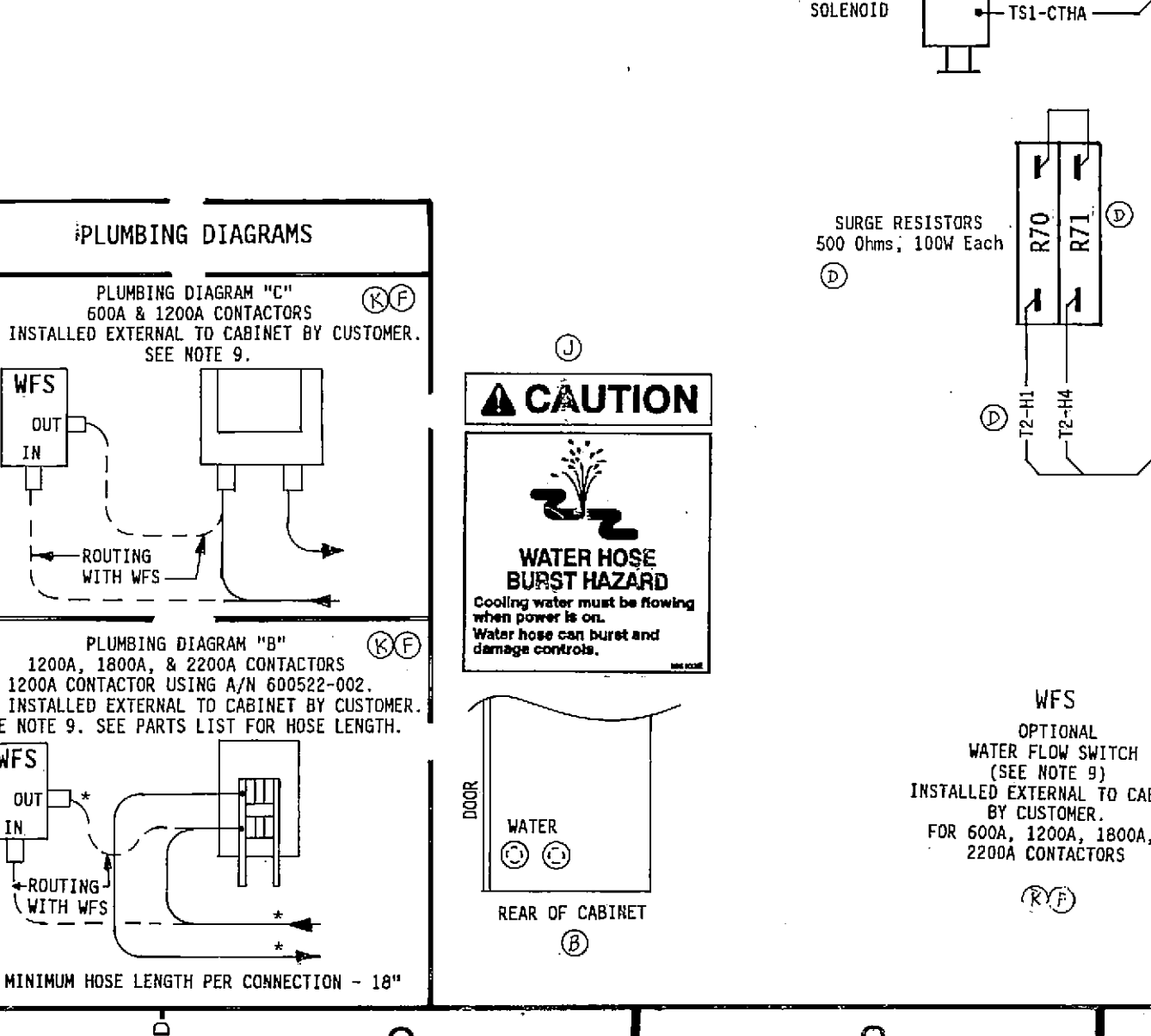
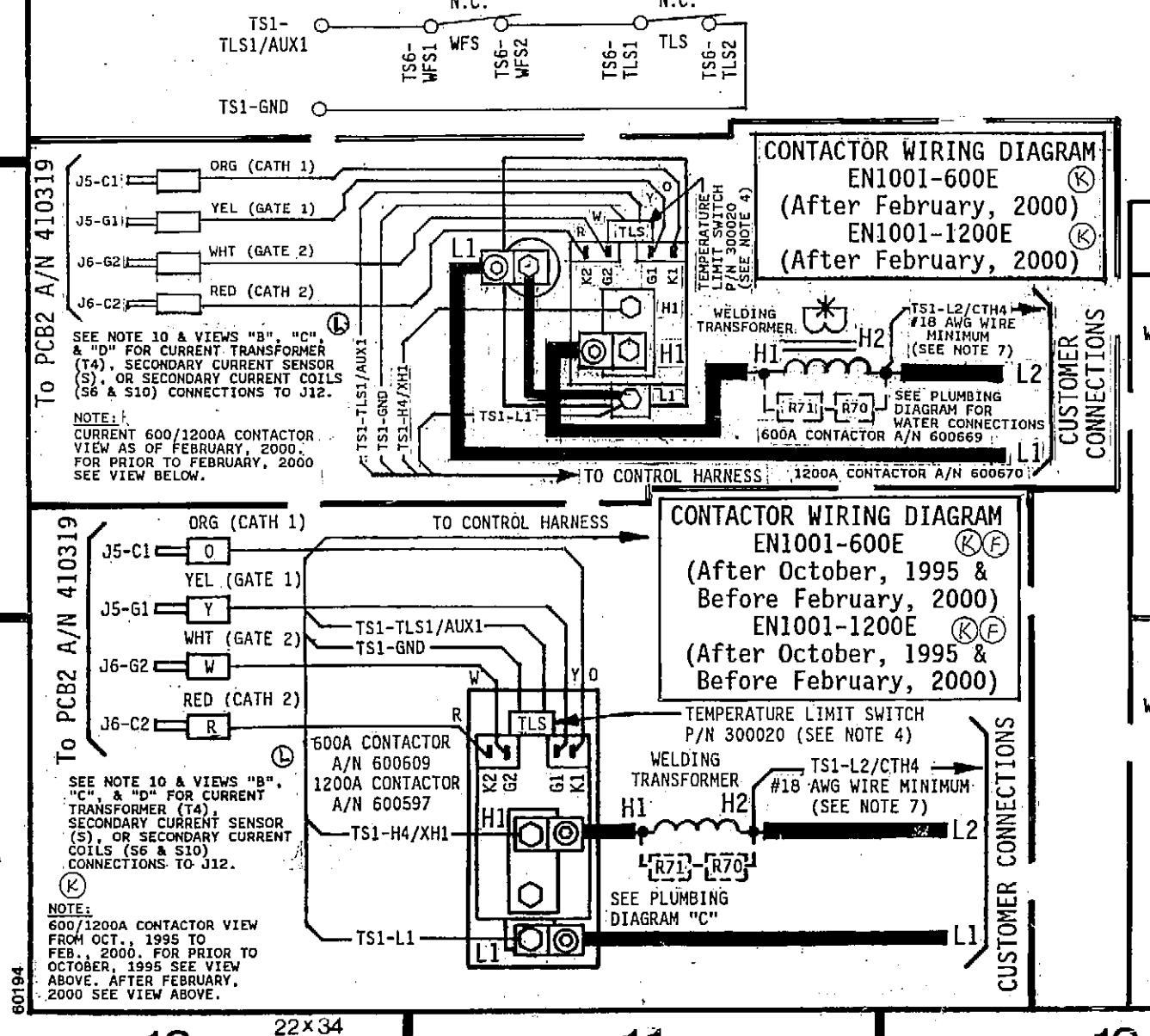
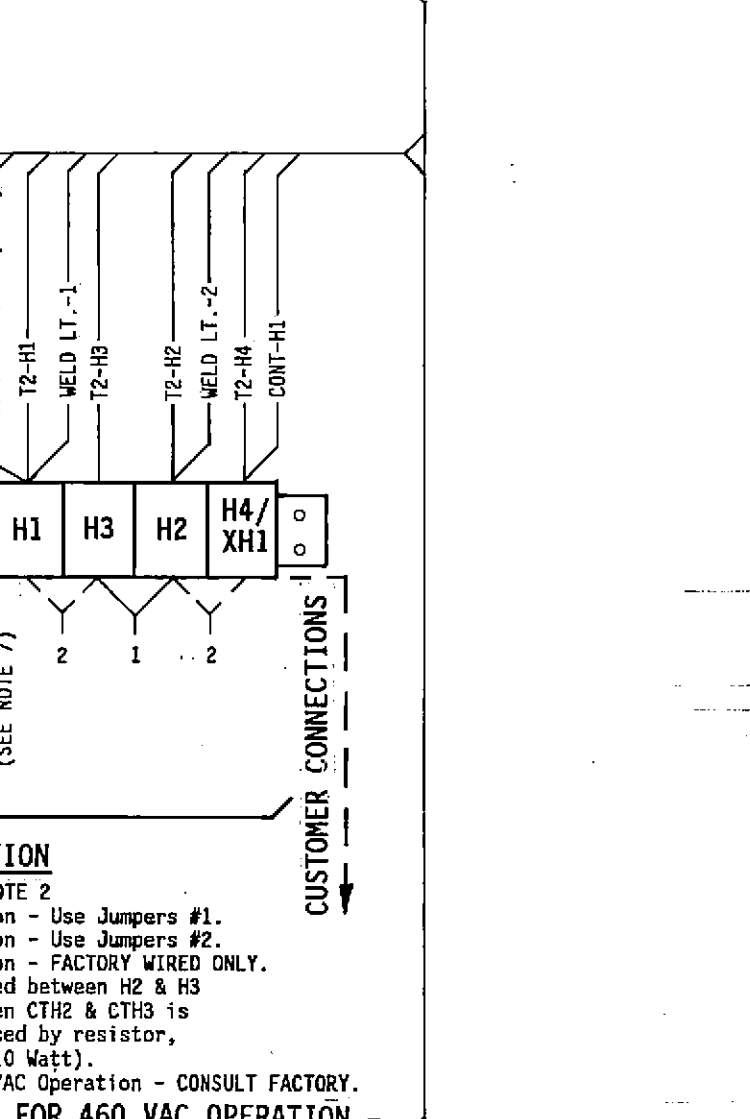
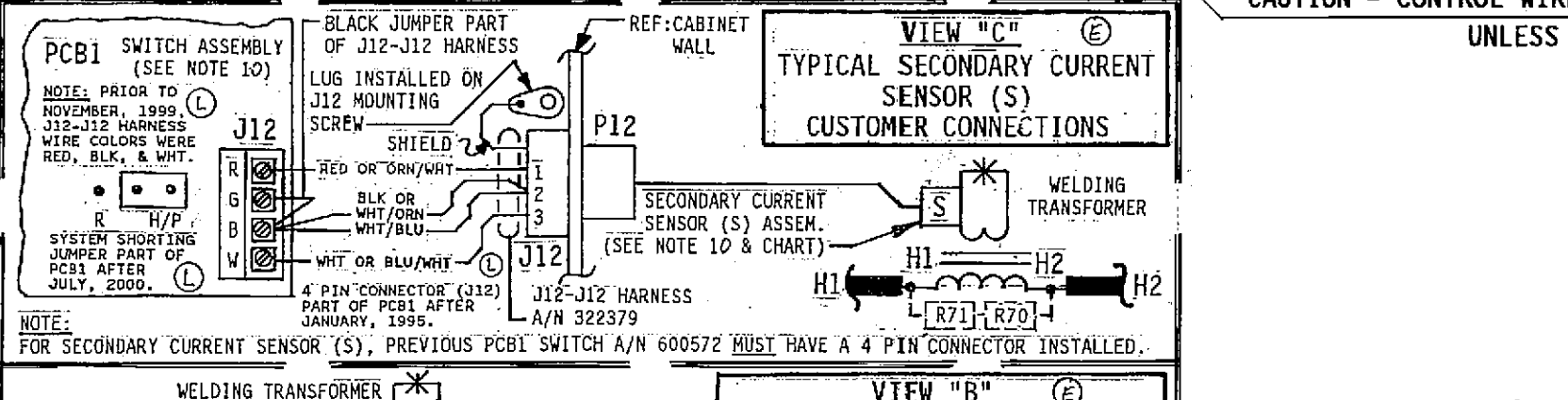
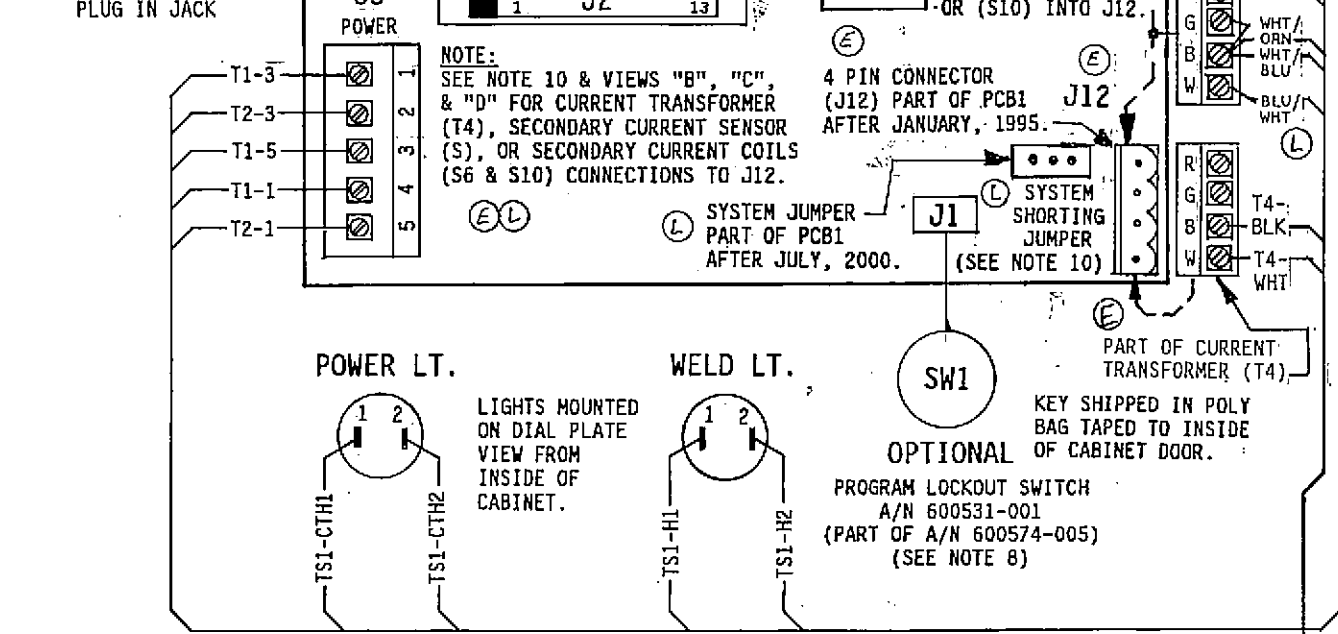
ENTRON CONTROLS INC. DIRECTLY (630) 602-9800 485 EAST RANDY ROAD CAROL STREAM, IL 60818 FAX # (630) 582-3374

CAUTION Control Shipped Wired for 460 VAC Operation unless otherwise specified - See Note 2.

Table with 5 columns: COIL/SENSOR MODEL NUMBER, CURRENT TRANSFORMER OR SECONDARY CURRENT SENSOR PART NUMBER, CONTACTOR SIZE, and various voltage ratings.



- NOTES: 1. It is recommended that control wiring... 2. For 460 VAC Operation - Use Jumper #1... 3. For Single Stage Pilot Operation... 4. EN1001-SERIES, "E" Cabinet...



PARTS LIST - CONTROL SECTION listing quantities, designations, part numbers, and descriptions for control components.

PARTS LIST - CONTACTOR SECTION listing quantities, designations, part numbers, and descriptions for contactor components.

Optional Keylock when specified by customer. See Note 8. Pack Key in Poly Bag 900148 & attach to Door w/ Yellow Tape 90019.

MANUFACTURING INSTRUCTIONS: See Drawing #440445 for Packing Instructions "E" Cabinet. See Drawing #440448 for Label Locations "E" Cabinet.

Revision history table with columns for REV, AUTH, DESCRIPTION, DATE, and DRWN BY.