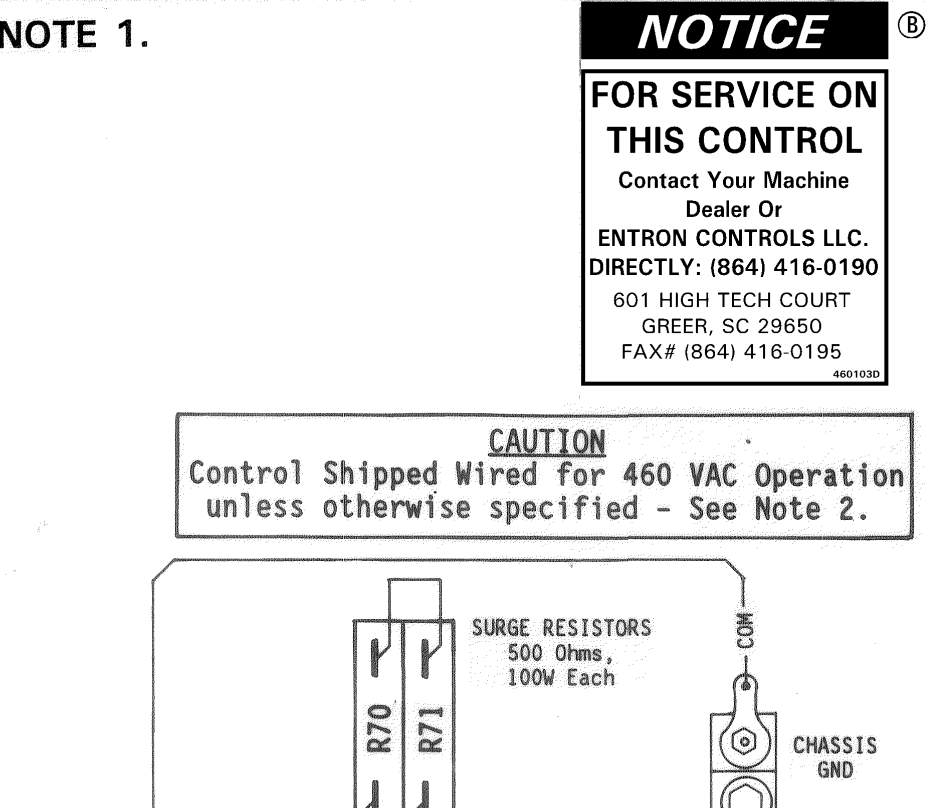
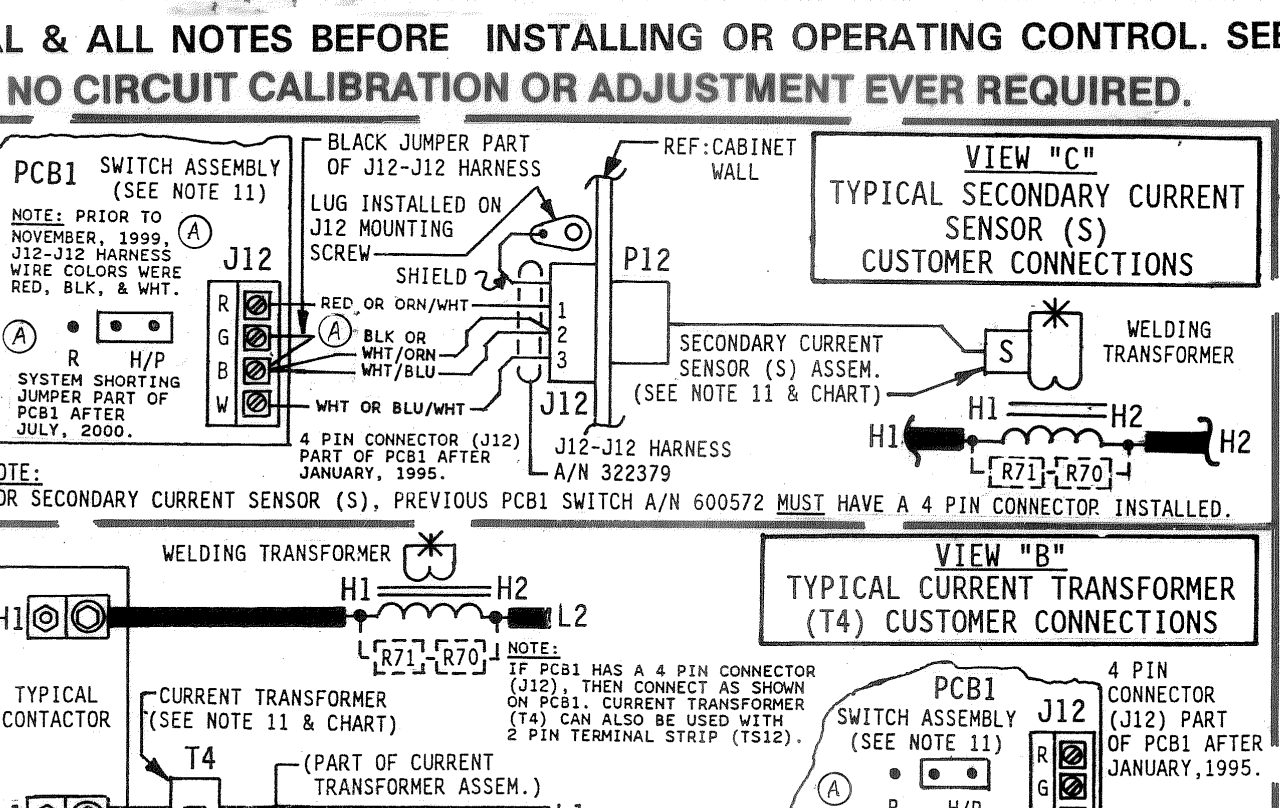
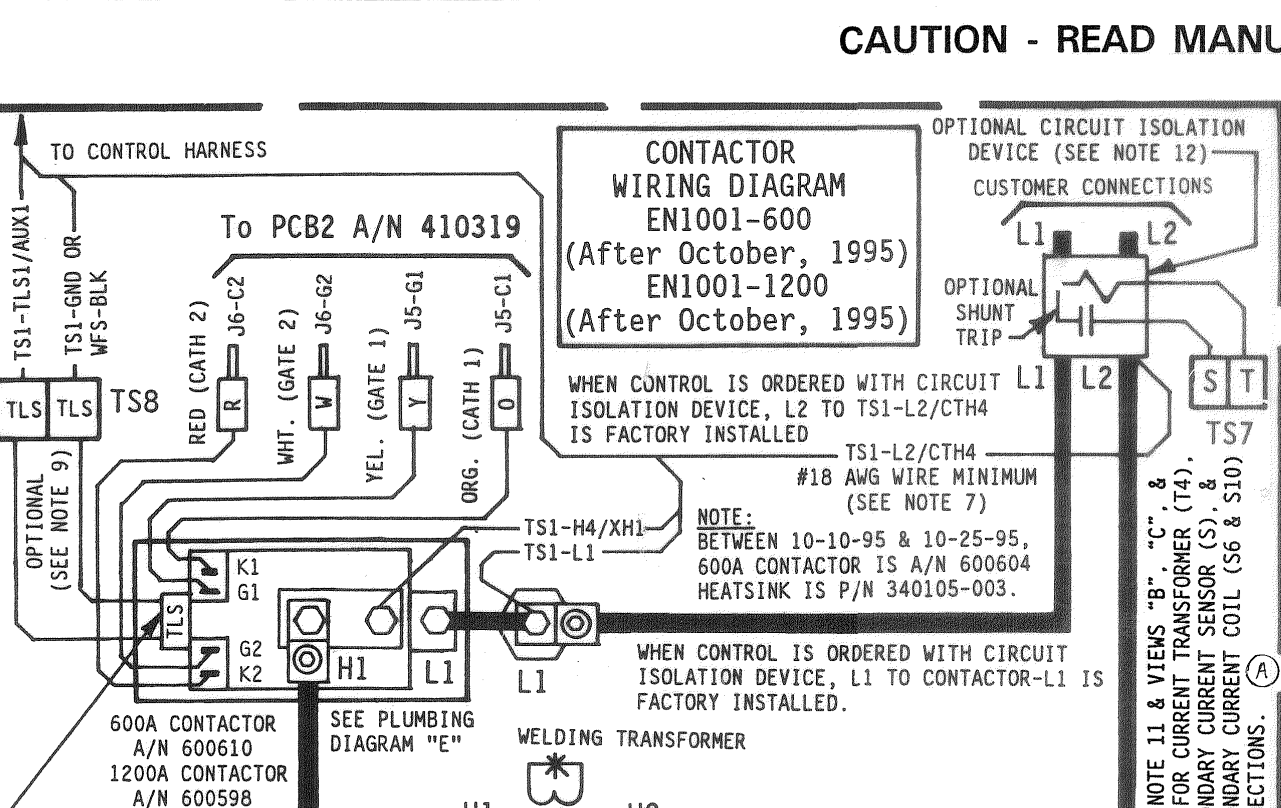
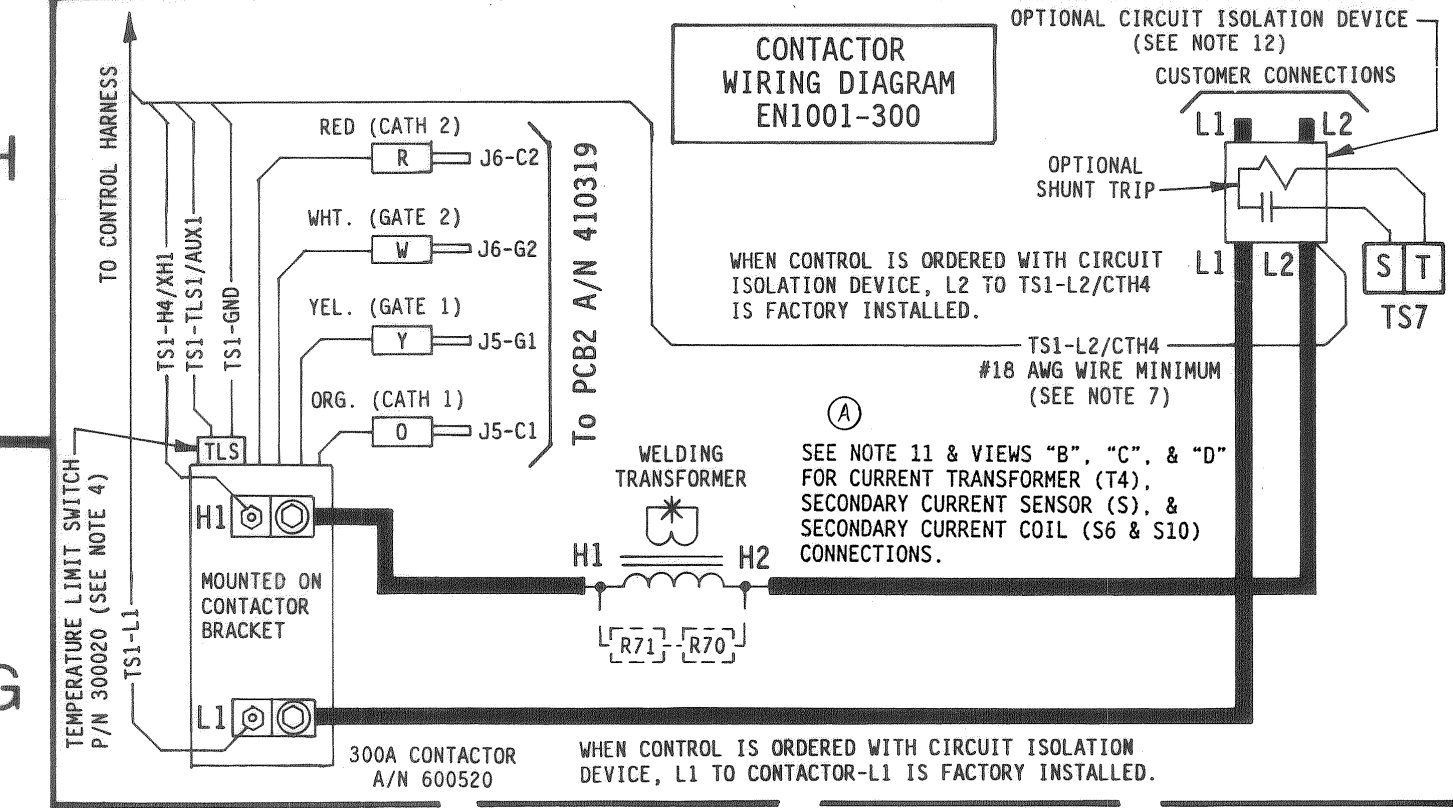


HAZARDOUS VOLTAGE
Turn off all voltage sources before touching any components.
Electrical shock or flash will cause severe injury or death.

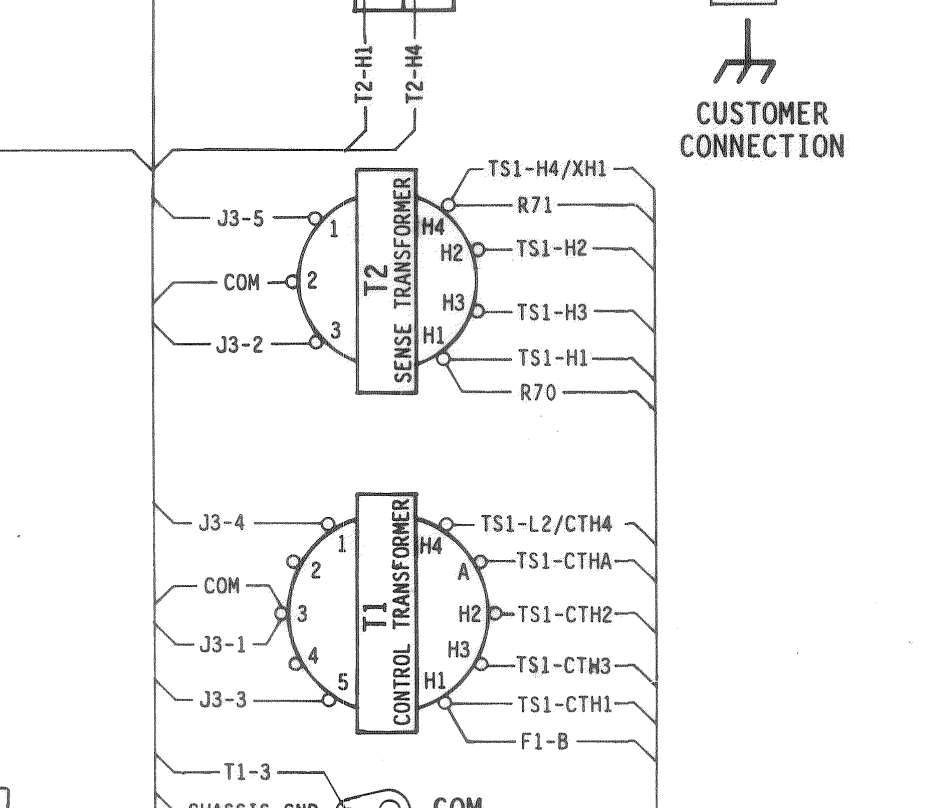
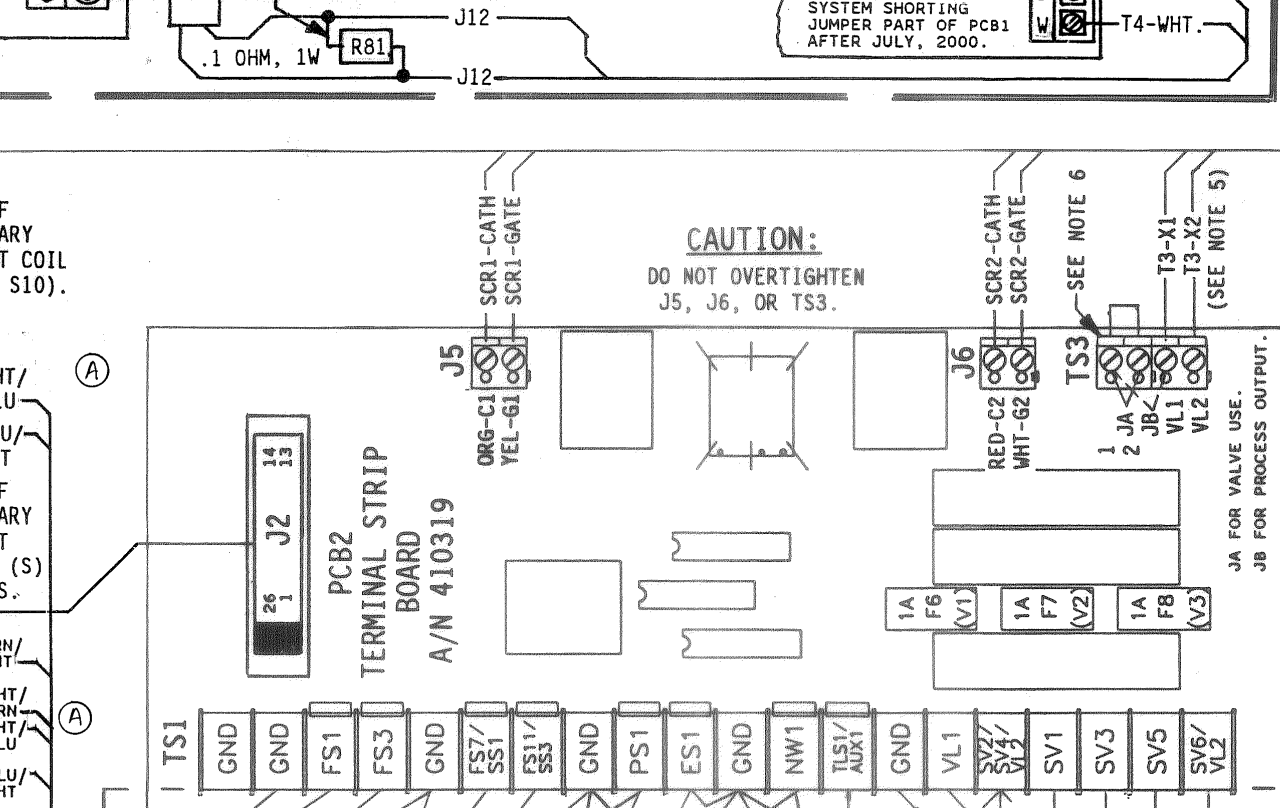
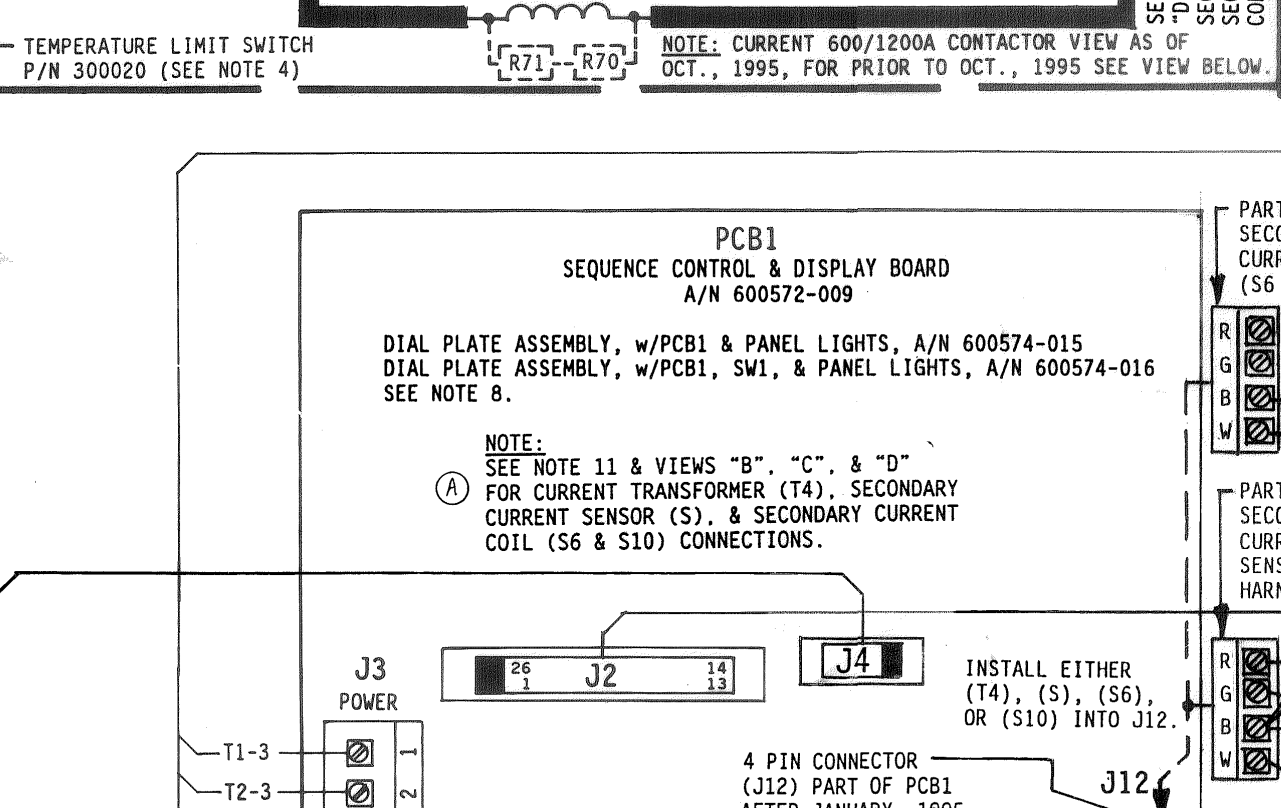
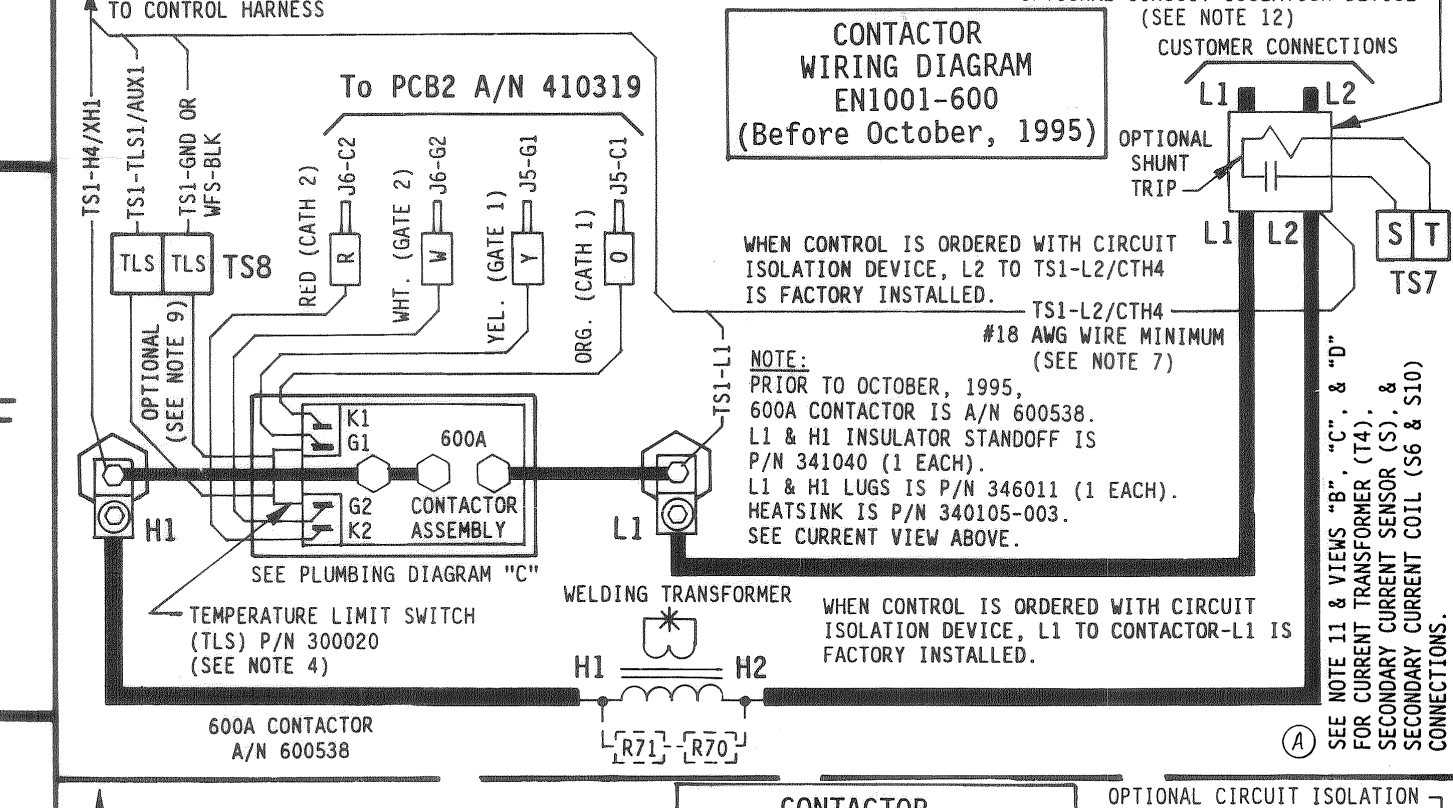
NOTICE
FOR SERVICE ON THIS CONTROL
Contact Your Machine Dealer Or
ENTRON CONTROLS LLC.
DIRECTLY: (864) 416-0190
601 HIGH TECH COURT
GREER, SC 29650
FAX: (864) 416-0195

CAUTION - READ MANUAL & ALL NOTES BEFORE INSTALLING OR OPERATING CONTROL. SEE NOTE 1.
NO CIRCUIT CALIBRATION OR ADJUSTMENT EVER REQUIRED.



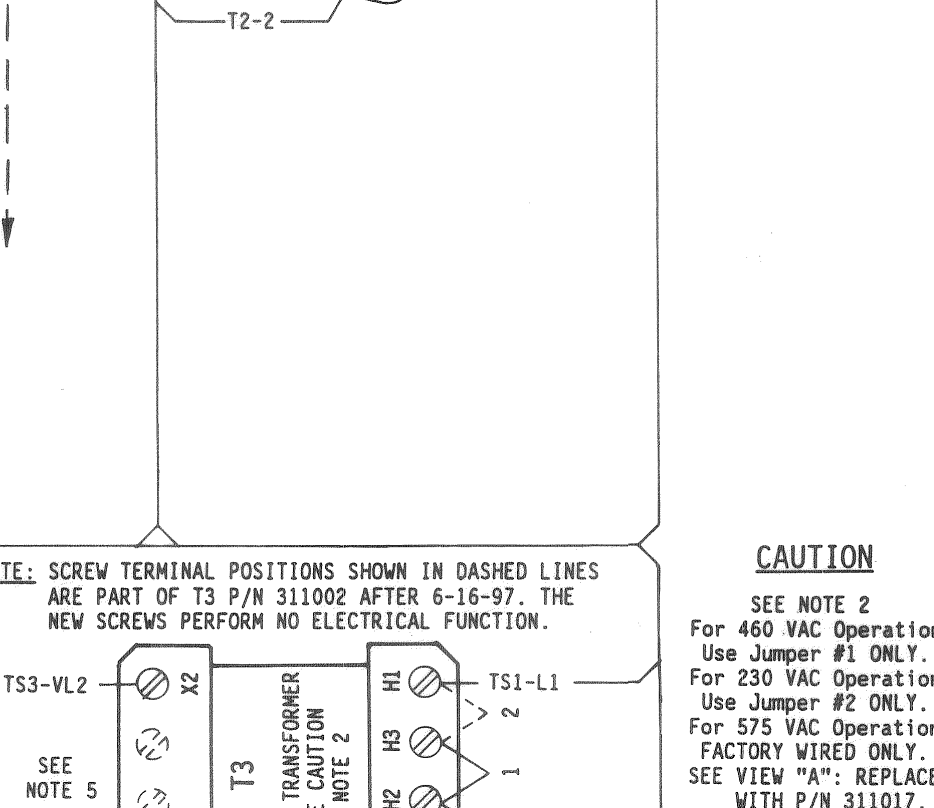
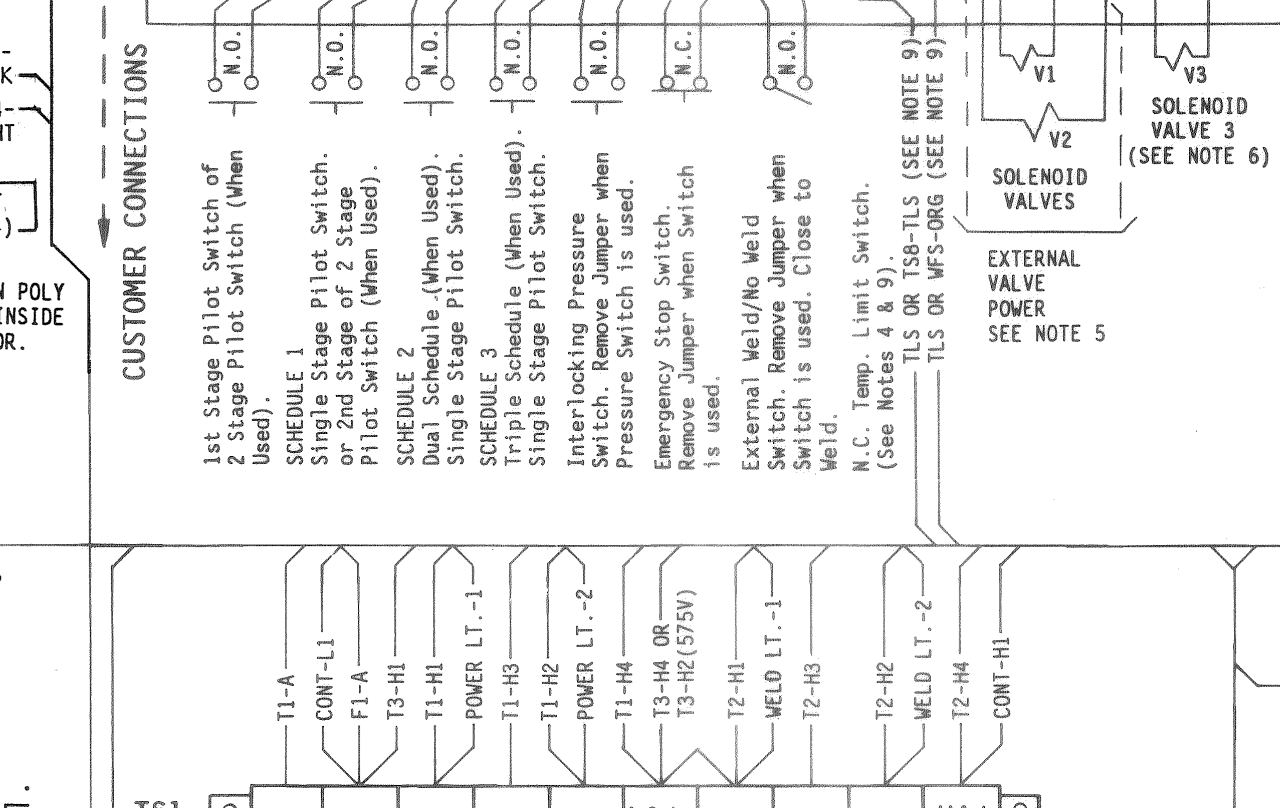
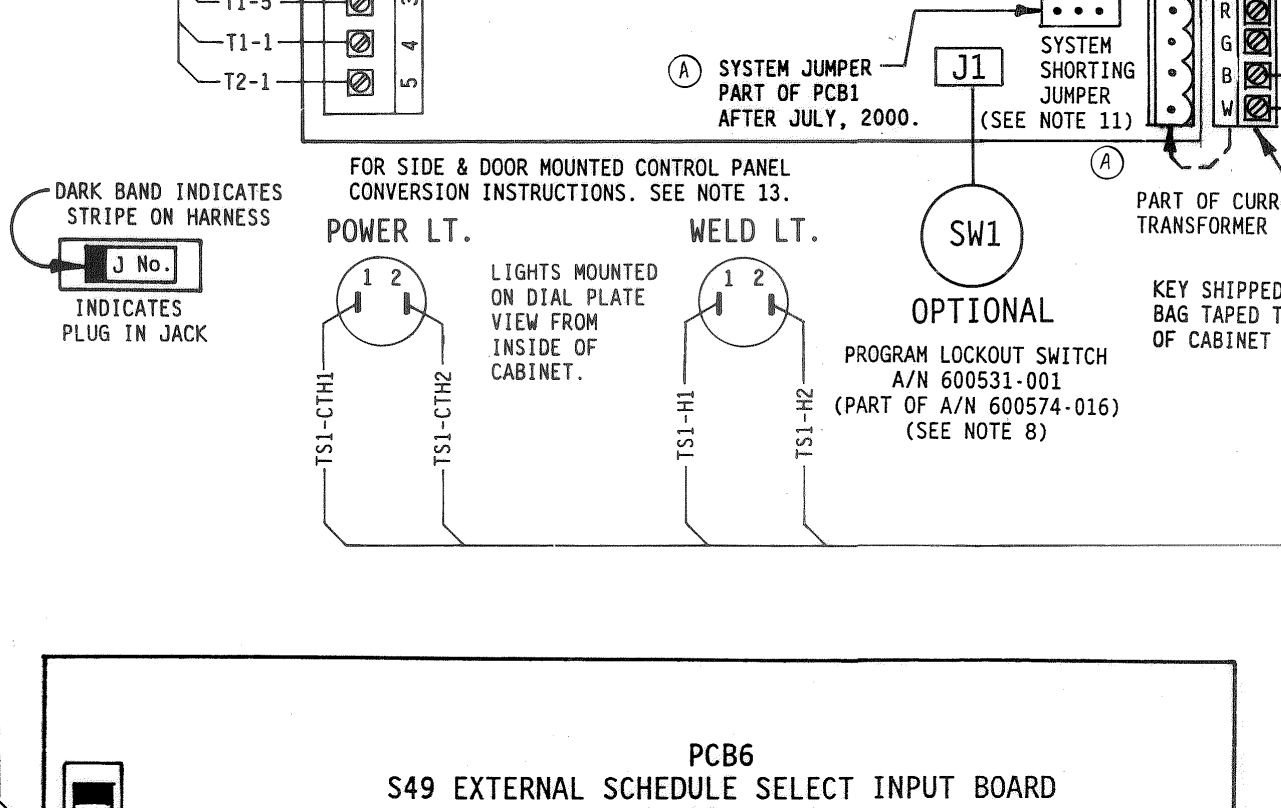
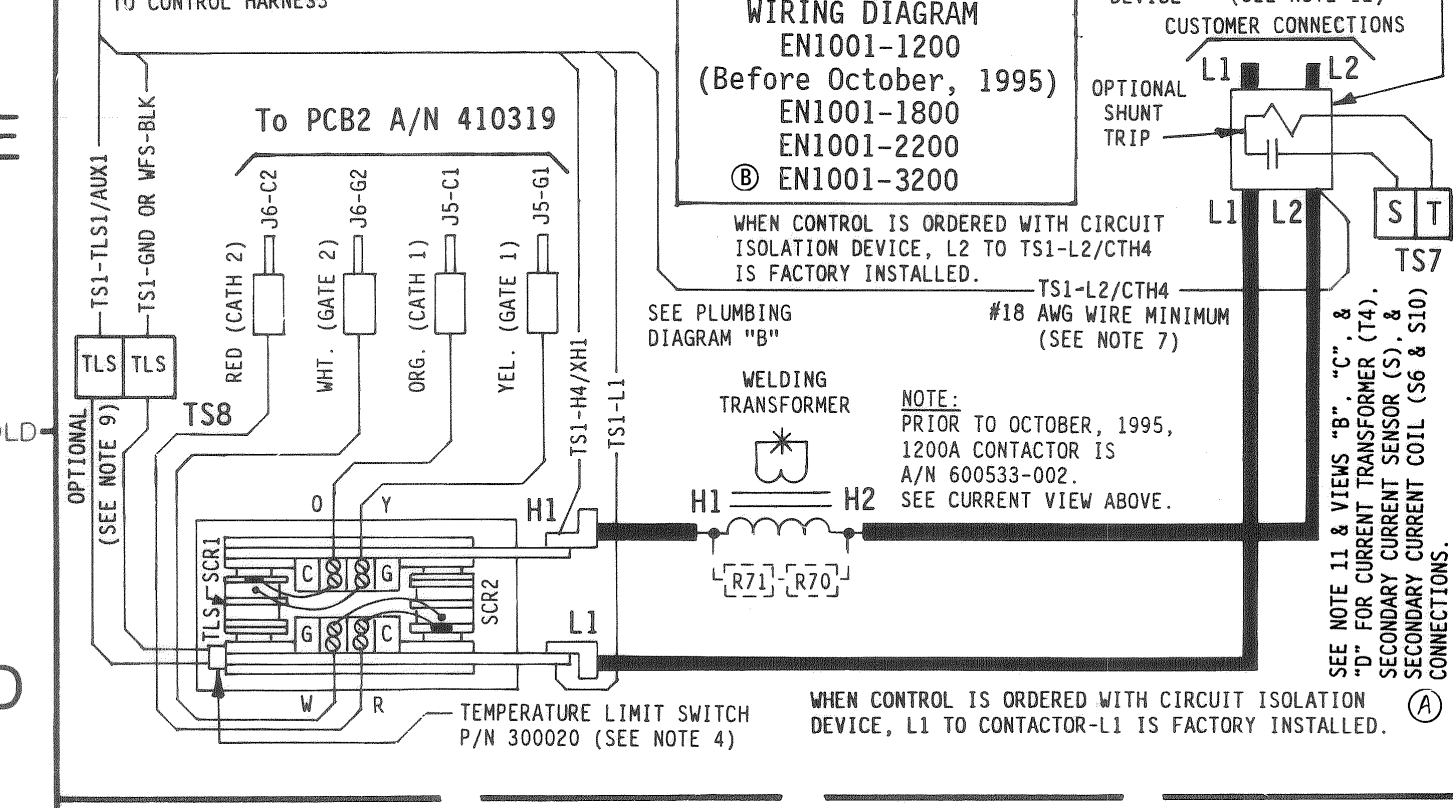
PARTS LIST - CONTROL SECTION

QTY.	DESIG.	PART NO.	DESCRIPTION
1	8	600574-015	Assem., Dial Plate, w/Sw. Assem., EN1001, Consisting of: Assem., Dial Plate, w/Sw. Assem. & Keylock, EN1001, Consisting of:
1	8	600572-009	Assem., Switch, Sequence Control & Display Board
1	8	600531-001	Assem., Switch, Keylock, Momentary, SPST (Illustrated Panel), Dial Plate, EN1001
1	1	515104	Panel, Display Window, Red Filter, EN1001
1	1	565003	Hot Plug, 3/4" Diam., Black



PARTS LIST - CONTACTOR SECTION

QTY.	DESIG.	PART NO.	DESCRIPTION
1	1	TS1	Terminal Strip, 10 Pin, (Part of J3 Harness)
1	1	TS7	Terminal Strip, 2 Pin, (Part of 1800/2200A Cont. Assem's.)
1	1	TS8	Transformer, Control, (Part of J3 Harness)
1	1	T2	Transformer, Sense, (Part of J3 Harness)
1	1	T3	Transformer, Valve, 150VA, 150VA
1	1	T3	Transformer, Valve, 150VA, 575V
1	1	T3	Transformer, Valve, 250VA
1	1	R71	Resistor, Power, 2000 Ohm, 10W, (For 575V)
1	1	R74	Resistor, Metal Oxide, 1 Ohm, 1W, (Part of Current Xmr Assem.)
1	1	R81	Resistor, 1 Pole, Mini, 600V
1	1	F1	Fuse, Control, 1/4A, FNO-R-1/4 or KLD-R-1/4
1	1	F6, 7, 8 (PCB2)	Fuse, 1 Amp, Slow Blow, 2AG, (Part of 410319)
1	1	(R70, 71) (TS)	Assem., Contactor, SCR, Water, 3200A, 460/575V, w/LS/LF Standoff, Insulator, 600/1200A Thyristor Contactor, L1
1	1	325149	Assem., Wire, Valve Transformer, 22 Ga., Black
1	1	600520	Assem., Contactor, Thyristor, Atr., 300A, 460/575V, w/LS
1	1	600510	Assem., Contactor, Thyristor, Water, 600A, 460/575V, w/LS
1	1	600598	Assem., Contactor, Thyristor, Water, 1200A, 460/575V, w/LS
1	1	600533-005	Assem., Contactor, SCR, Water, 1800A, 460/575V, w/LS
1	1	600533-003	Assem., Contactor, SCR, Water, 2200A, 460/575V, w/LS
1	1	600533-007	Assem., Contactor, SCR, Water, 3200A, 460/575V, w/LS Standoff, Insulator, 600/1200A Thyristor Contactor, L1
1	1	325174	Assem., Wire, Contactor-L1 to Lug-L1, 600/1200A Thyristor Cont. Lug, Screw, 5/16" Bolt to 2/0 Wire, 600A Thyristor Contactor, H1
1	1	346011	Lug, Screw, 1/4" Bolt to 2/0 Wire, 600A Thyristor Contactor, L1
1	1	346027	Assem., Transformer, Current, 200:5, P2
1	1	T4	Assem., Transformer, Current, 500:5, P5
1	1	T4	Assem., Transformer, Current, 1000:5, P10
1	1	T4	Assem., Transformer, Current, 2000:5, P20
1	1	S6	Secondary Current Sensor, 10" Coil Rogowski
1	1	S6	Secondary Current Sensor, 10" Coil Rogowski
1	1	J32	Assem., Harness, Secondary Current, Rogowski Coil
1	1	J32	Lug, Screw, Chassis GND, 2/0 Wire
1	1	PCB2	Assem., PCB, Terminal Strip Board, EN1001/EN1001
1	1	(PCB2)	Plate, Mounting, Terminal Strip Board
1	1	S25035	Bracket, Mounting, 300A Thyristor Contactor
1	1	S25136	Bracket, Mounting, 1800/2200A Contactors
1	1	S25021	Plate, Mounting, 600/1200A Contactors
1	1	TLS	Switch, Temperature Limit, (N.C.), (Part of 300A Contactor & 1800/2200A Contactor Assem.'s)
1	1	PCB6	Assem., PCB, External Schedule Select S49 Input Board
1	1	900045	Hose Clamp, 3/8" Hose
1	1	56610	Assem., Water Fitting, 3/8" Hose
1	1	600179	Assem., Water Flow Switch, 3/8" Hose
1	1	600299	Assem., Secondary Current Sensor (S)
1	1	322379	Assem., Harness, Secondary Current Sensor
1	1	550014	Vault Closing Door Mechanism, "D"/T/LS/LF Cabinet
1	1	510247	Cabinet, Control, Style "D"/T, w/CB
1	1	510248	Door, Cabinet, Control, Style "D"/T, w/CB
1	1	510247-005	Cabinet, Control, Style "D"/T, w/CB, Modified for 300A Cont.
1	1	510257	Cabinet, Control, Style "LS/LF", w/CB
1	1	510258	Door, Cabinet, Control, Style "LS/LF"
1	1	S25021	Circuit Breaker, Pole, Amp, V, (See Note 12)
1	1	700120	Manual, EN1001
1	1	421271	Logic Diagram, EN1001 Control
1	1	421269-018	Wiring Diagram, EN1001/S49-Series, "D"/T/LS/LF Cabinet

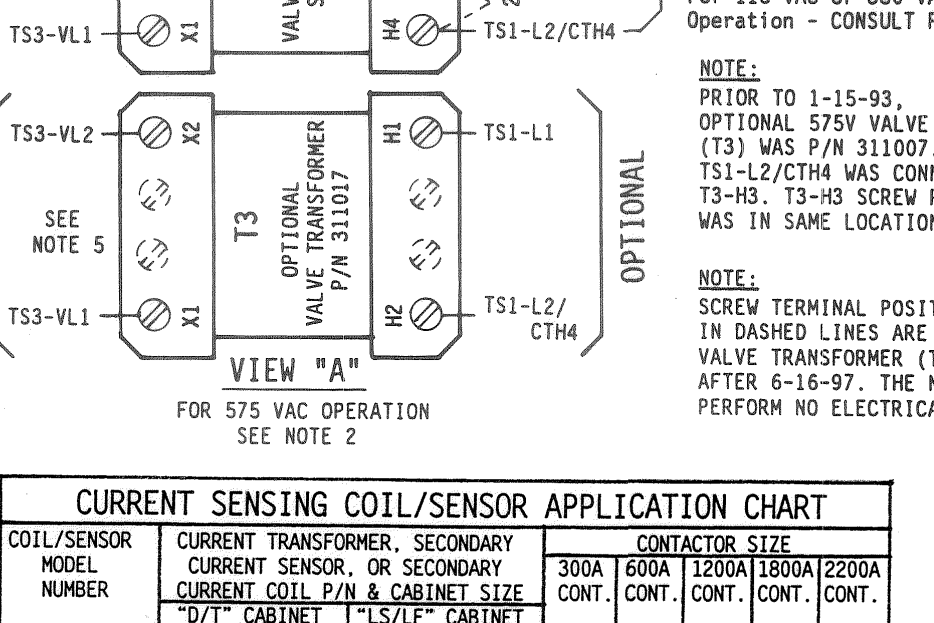
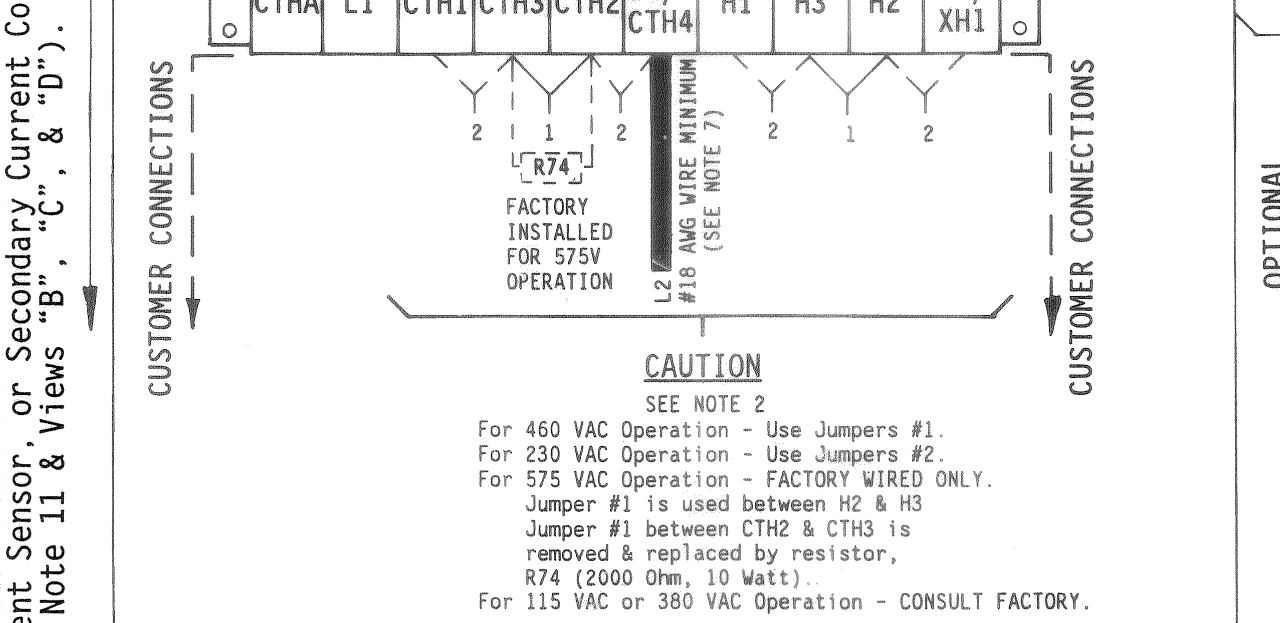
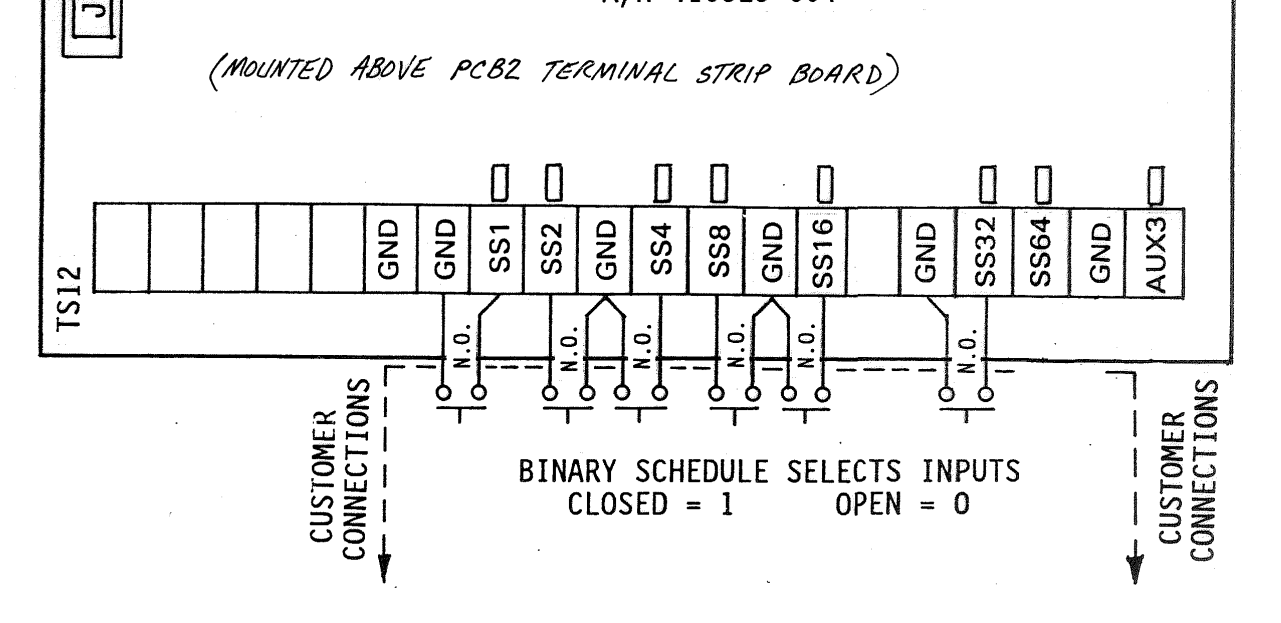
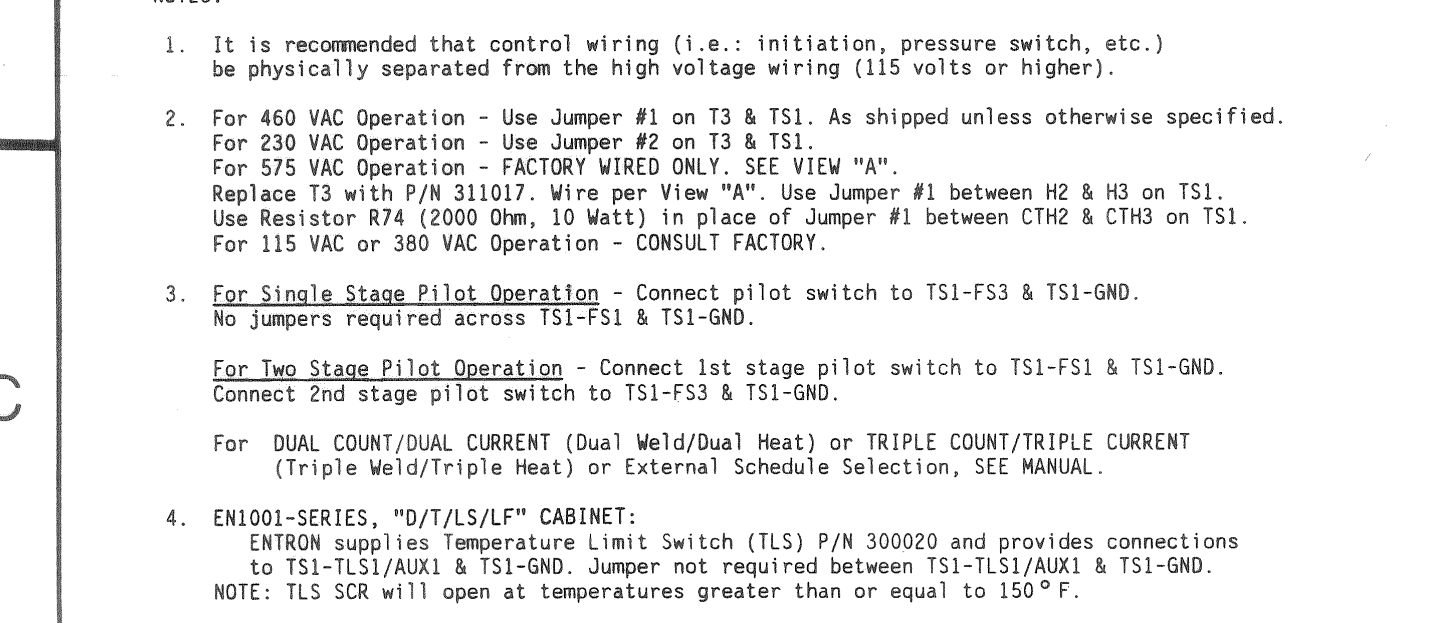


CAUTION - CONTROL WIRE FOR 460 VAC OPERATION - UNLESS OTHERWISE SPECIFIED.

CAUTION - CONTROL WIRE FOR 575 VAC OPERATION - UNLESS OTHERWISE SPECIFIED.

CAUTION - CONTROL WIRE FOR 460 VAC OPERATION - UNLESS OTHERWISE SPECIFIED.

CAUTION - CONTROL WIRE FOR 575 VAC OPERATION - UNLESS OTHERWISE SPECIFIED.

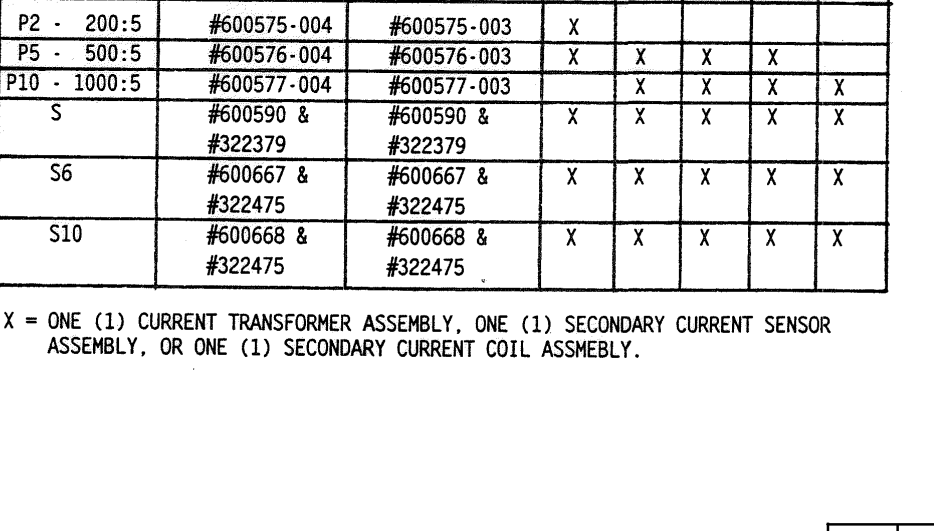
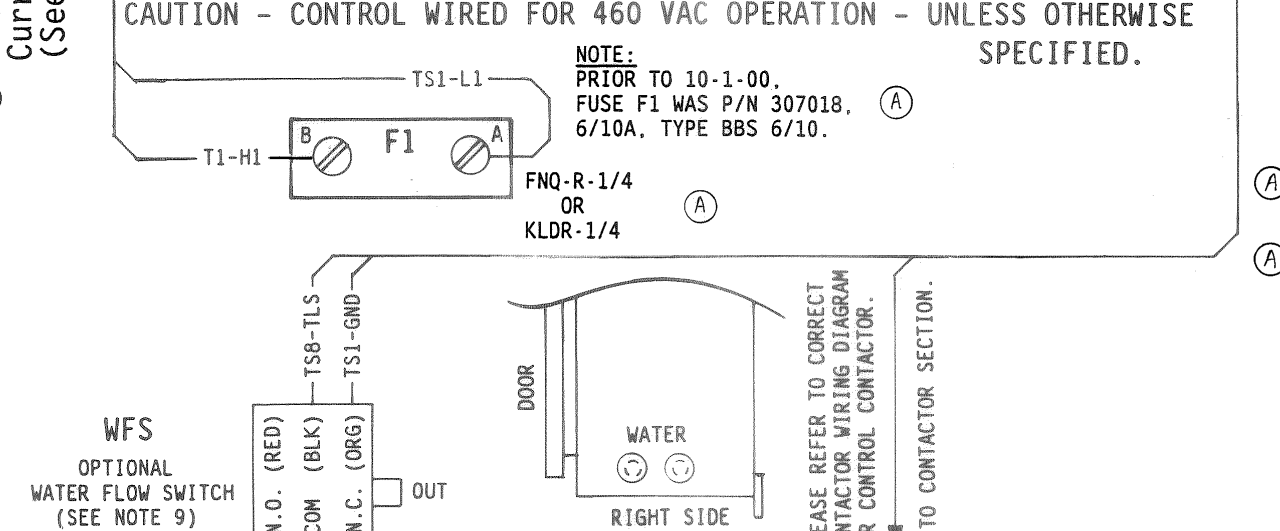
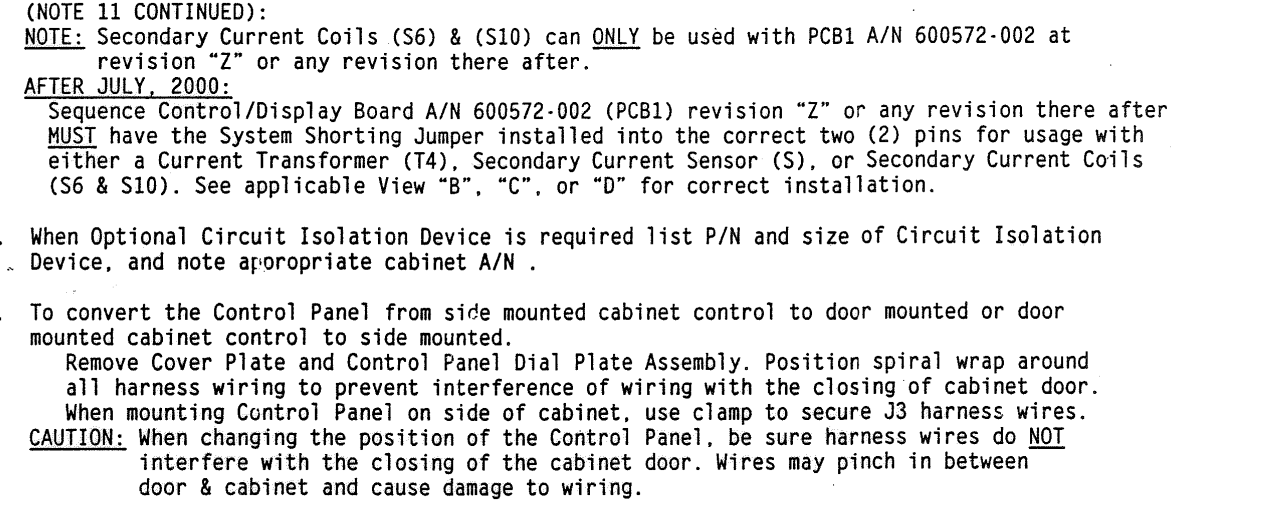
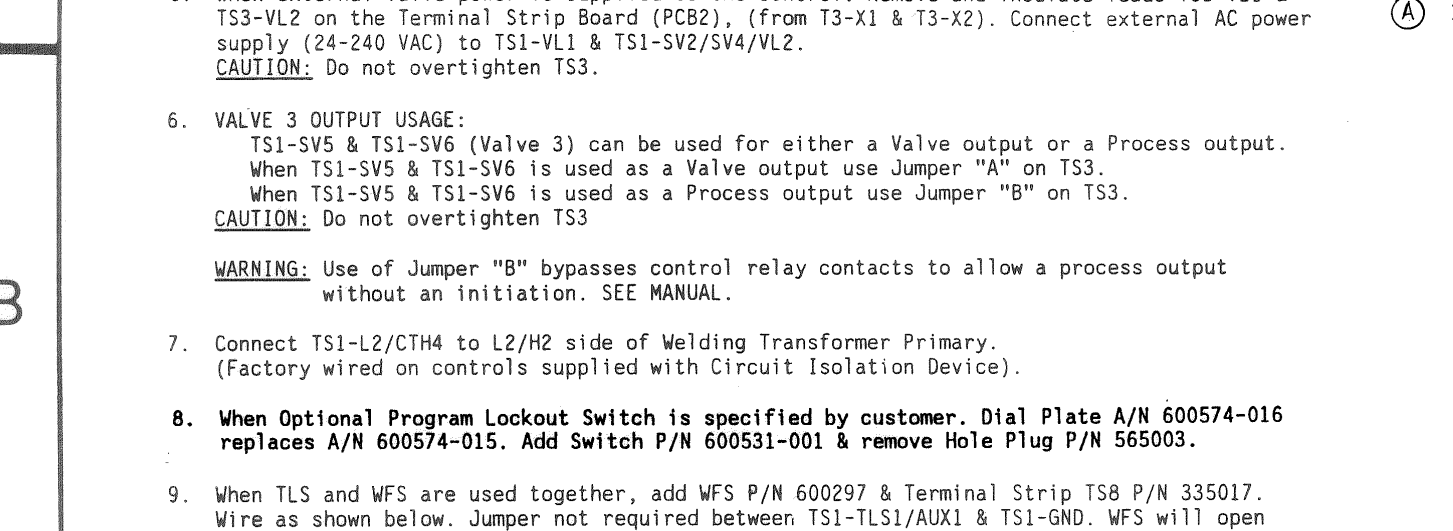


CAUTION - CONTROL WIRE FOR 460 VAC OPERATION - UNLESS OTHERWISE SPECIFIED.

CAUTION - CONTROL WIRE FOR 575 VAC OPERATION - UNLESS OTHERWISE SPECIFIED.

CAUTION - CONTROL WIRE FOR 460 VAC OPERATION - UNLESS OTHERWISE SPECIFIED.

CAUTION - CONTROL WIRE FOR 575 VAC OPERATION - UNLESS OTHERWISE SPECIFIED.

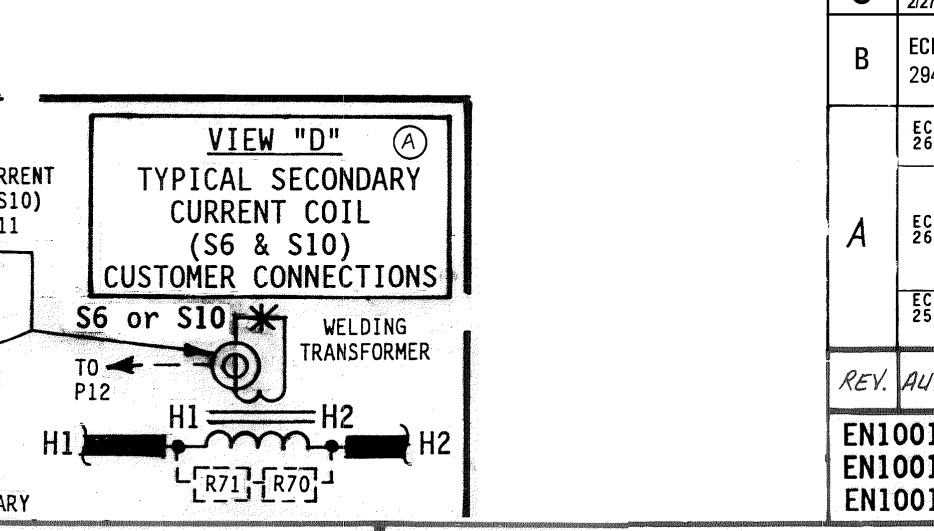
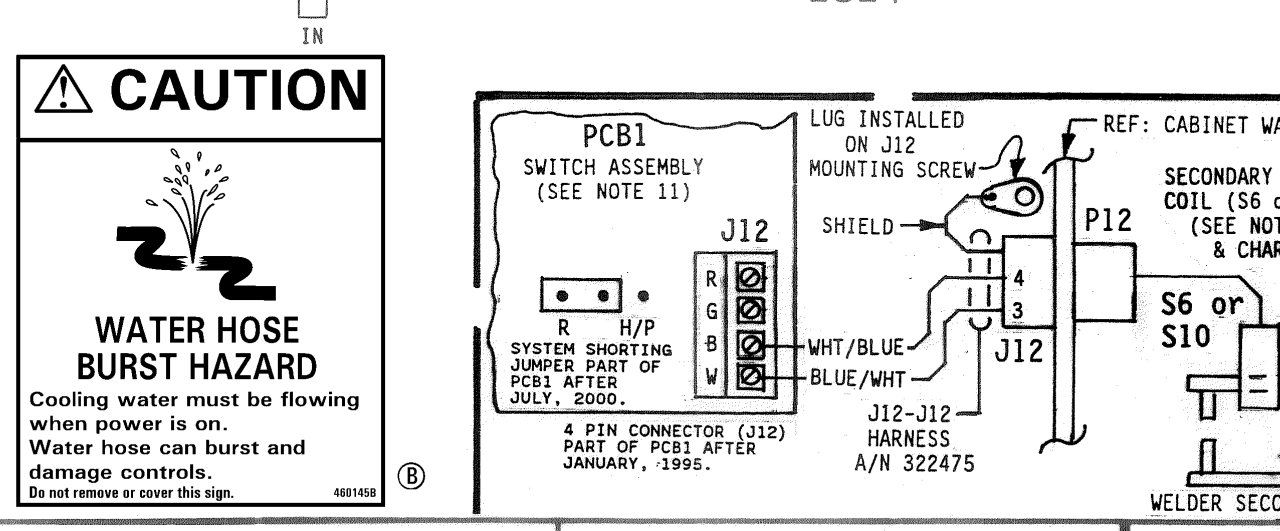
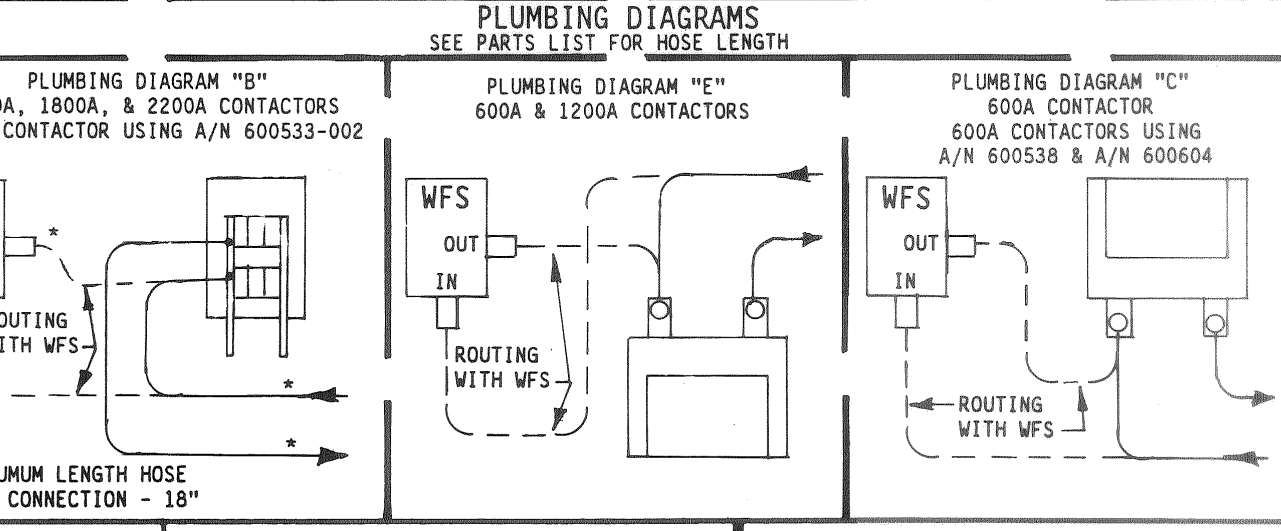
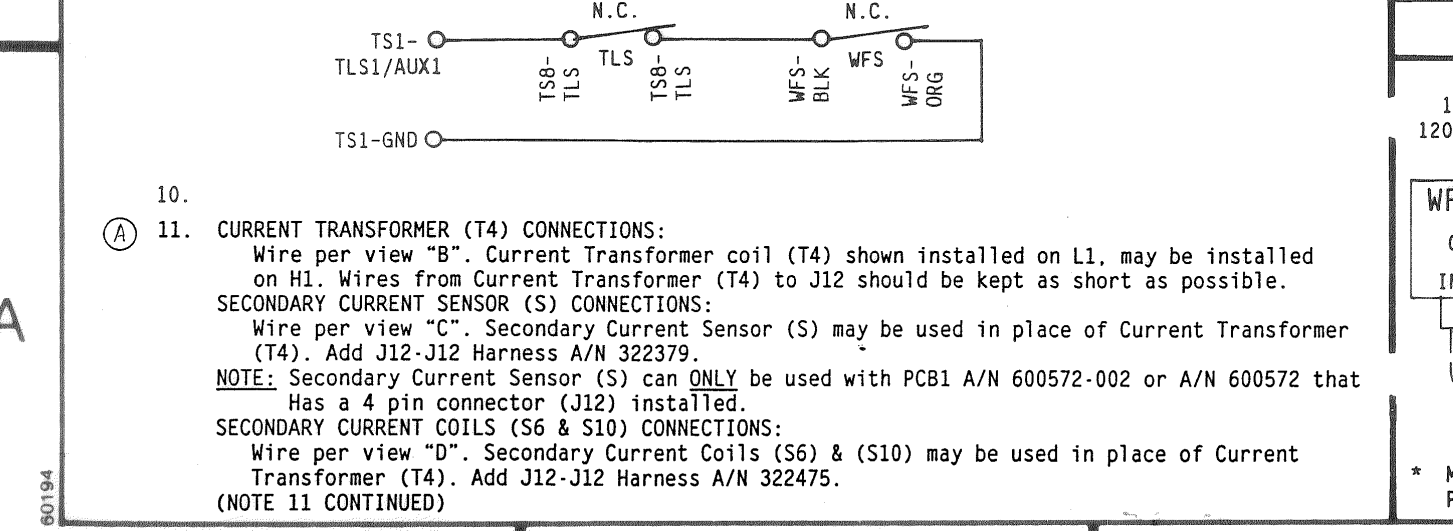


CAUTION - CONTROL WIRE FOR 460 VAC OPERATION - UNLESS OTHERWISE SPECIFIED.

CAUTION - CONTROL WIRE FOR 575 VAC OPERATION - UNLESS OTHERWISE SPECIFIED.

CAUTION - CONTROL WIRE FOR 460 VAC OPERATION - UNLESS OTHERWISE SPECIFIED.

CAUTION - CONTROL WIRE FOR 575 VAC OPERATION - UNLESS OTHERWISE SPECIFIED.



CAUTION - CONTROL WIRE FOR 460 VAC OPERATION - UNLESS OTHERWISE SPECIFIED.

CAUTION - CONTROL WIRE FOR 575 VAC OPERATION - UNLESS OTHERWISE SPECIFIED.

CAUTION - CONTROL WIRE FOR 460 VAC OPERATION - UNLESS OTHERWISE SPECIFIED.

CAUTION - CONTROL WIRE FOR 575 VAC OPERATION - UNLESS OTHERWISE SPECIFIED.