

CAUTION - READ MANUAL & ALL NOTES BEFORE INSTALLING OR OPERATING CONTROL. SEE NOTE 1.  
NO CIRCUIT CALIBRATION OR ADJUSTMENT EVER REQUIRED.

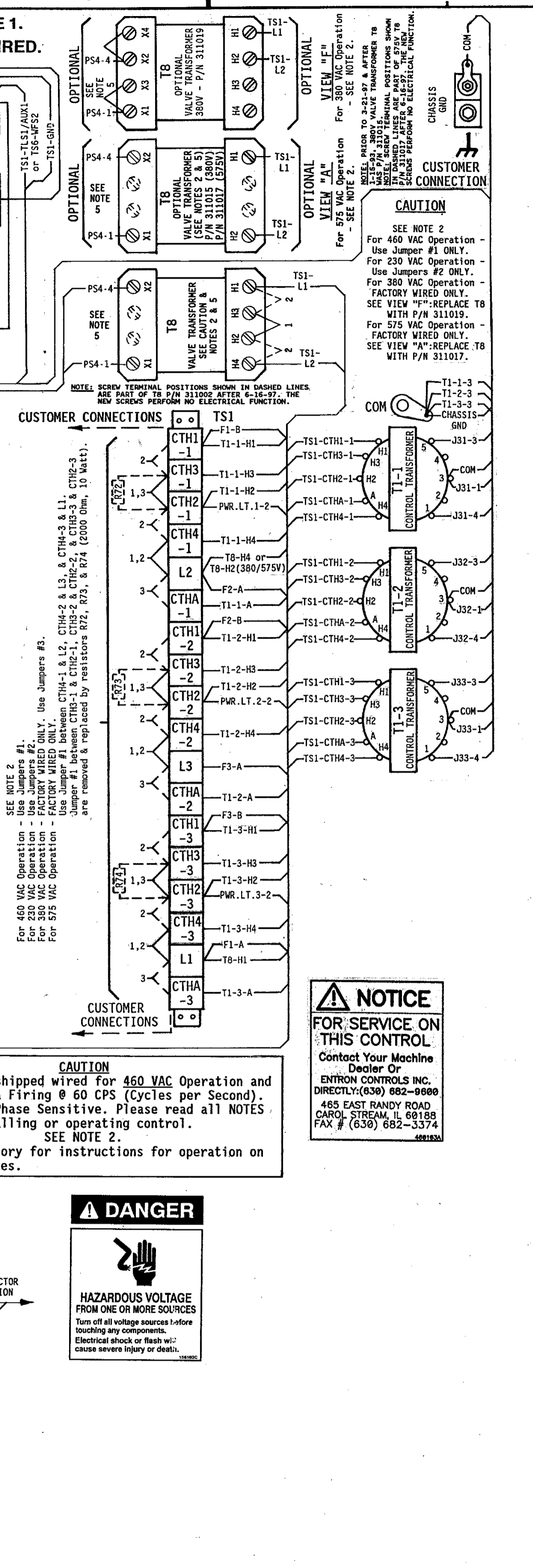
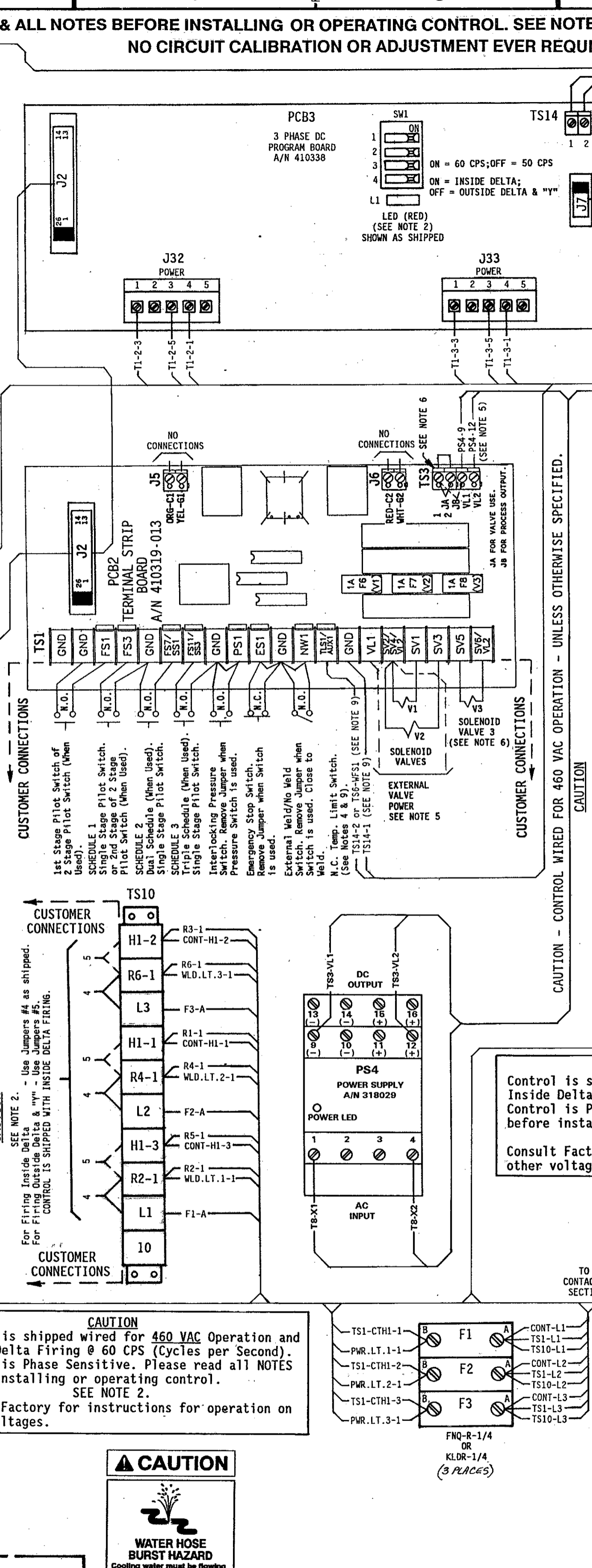
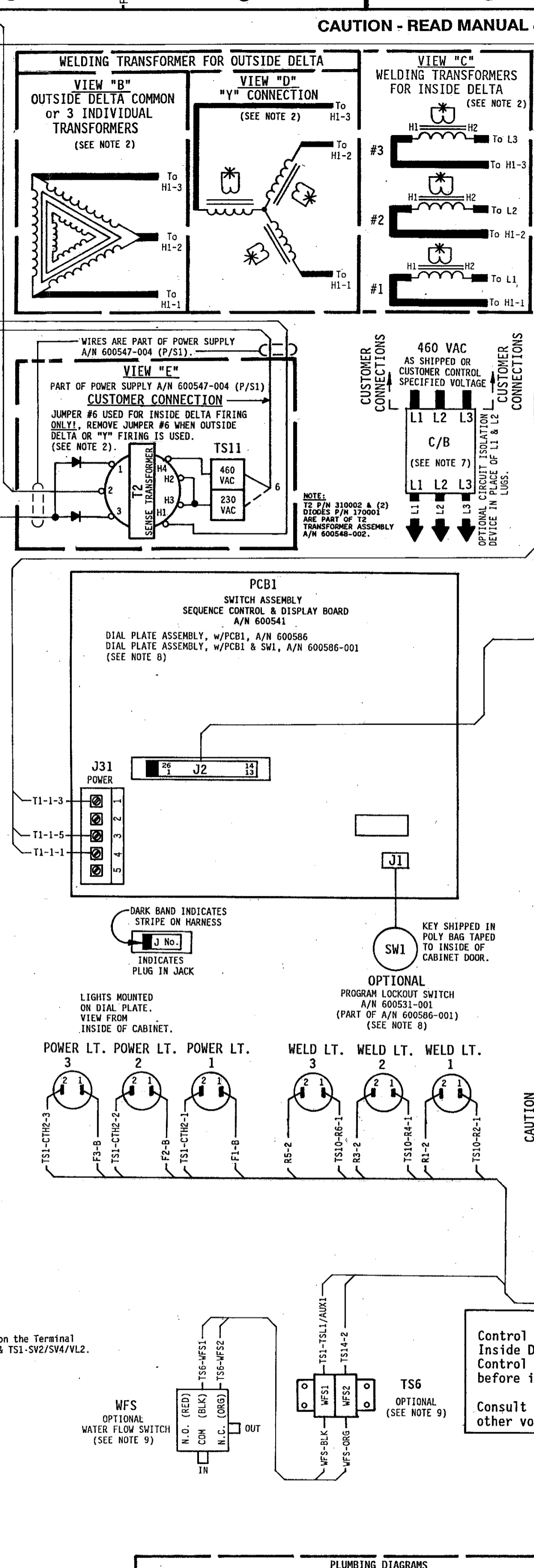
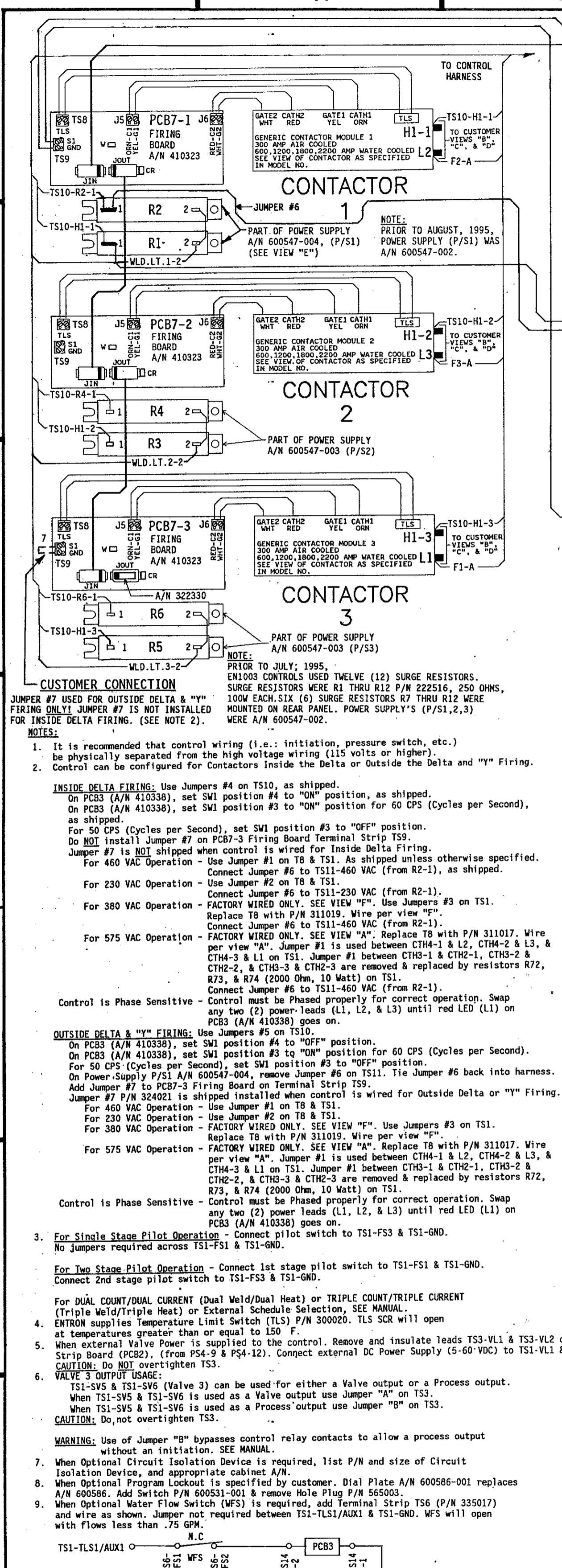
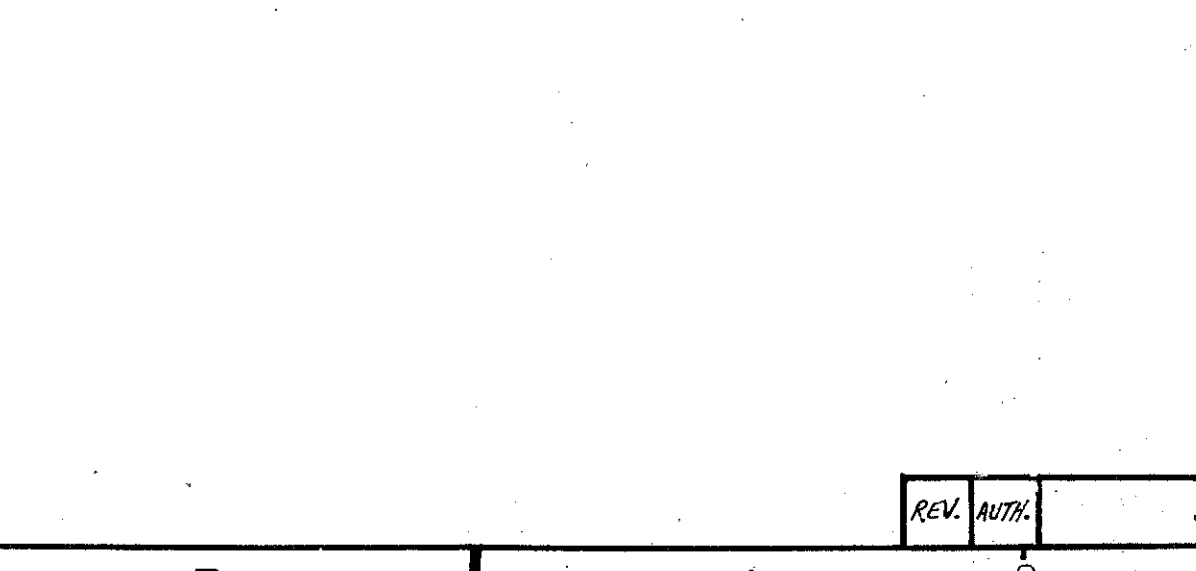
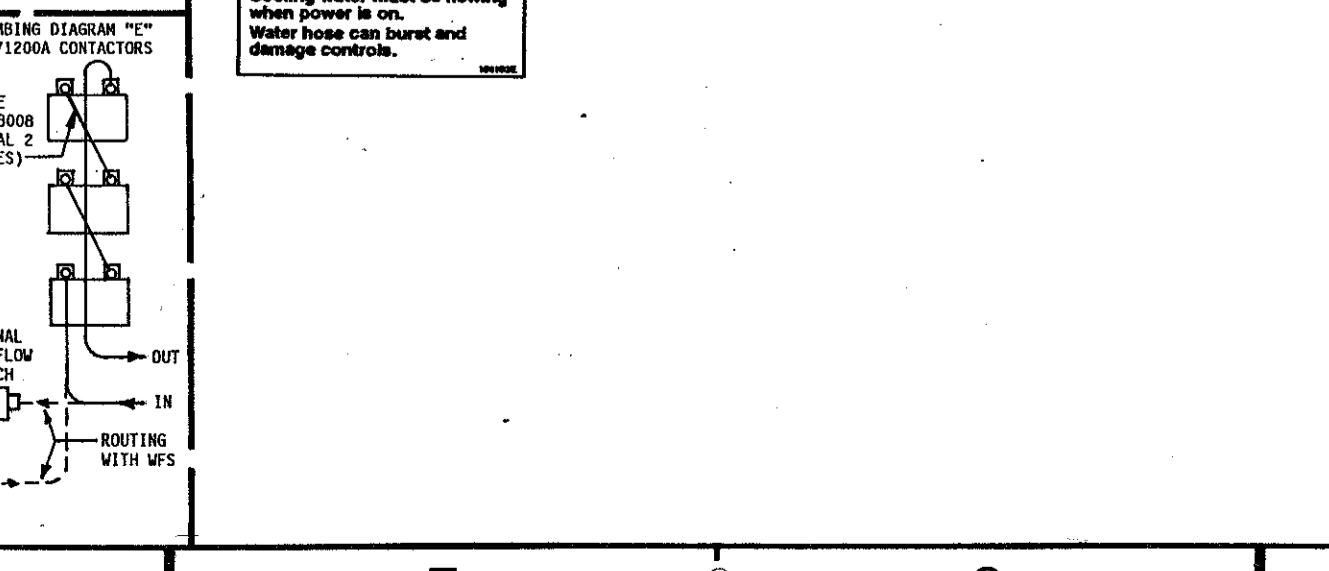
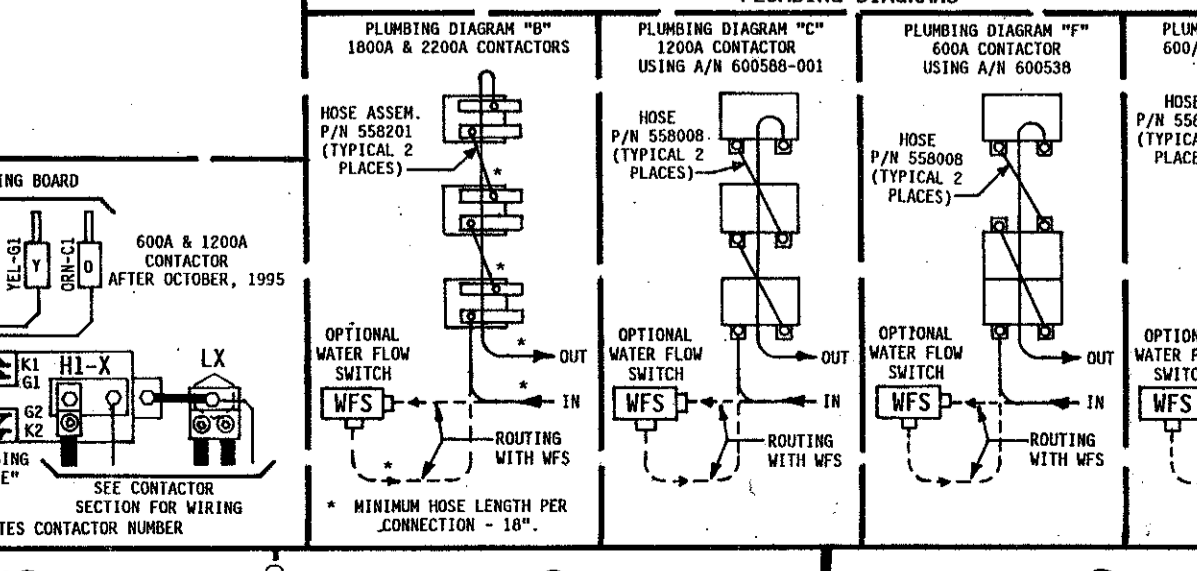
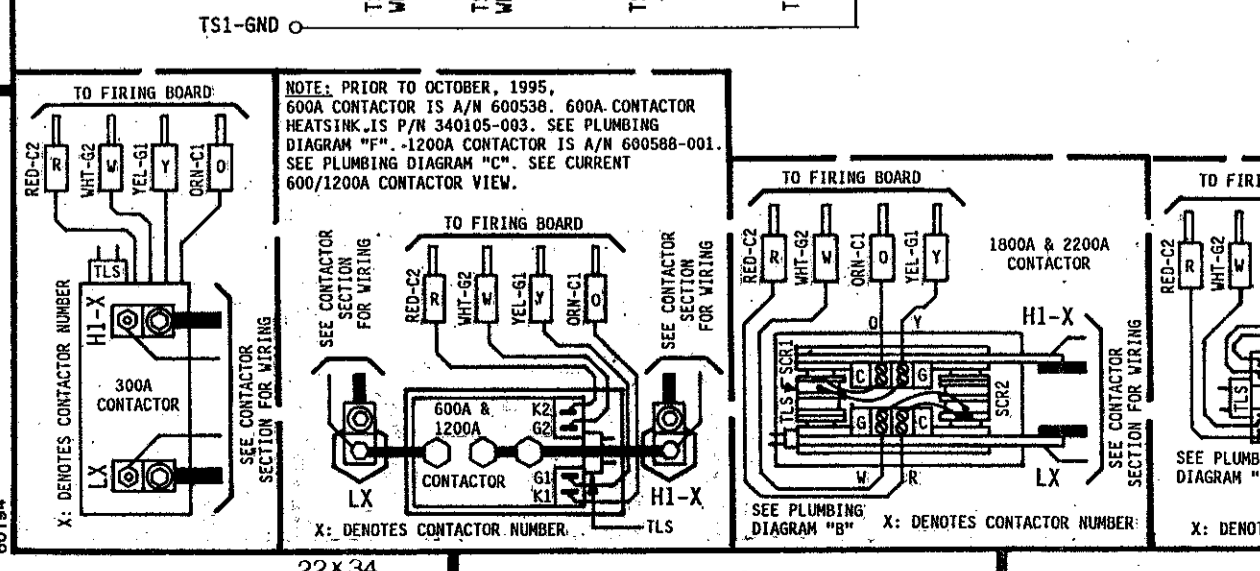


Table with 4 columns: QTY., DESIG., PART NO., DESCRIPTION. Lists parts for the control section.

Table with 4 columns: QTY., DESIG., PART NO., DESCRIPTION. Lists parts for the contactor section.



NOTICE FOR SERVICE ON THIS CONTROL. Contact information for Entron Controls Inc.

MANUFACTURING INSTRUCTIONS. Details regarding assembly and part specifications.

Revision table with columns: REV, AUTH, DESCRIPTION, DRWN, CHK, BY, DATE. Includes drawing number 421291-002.