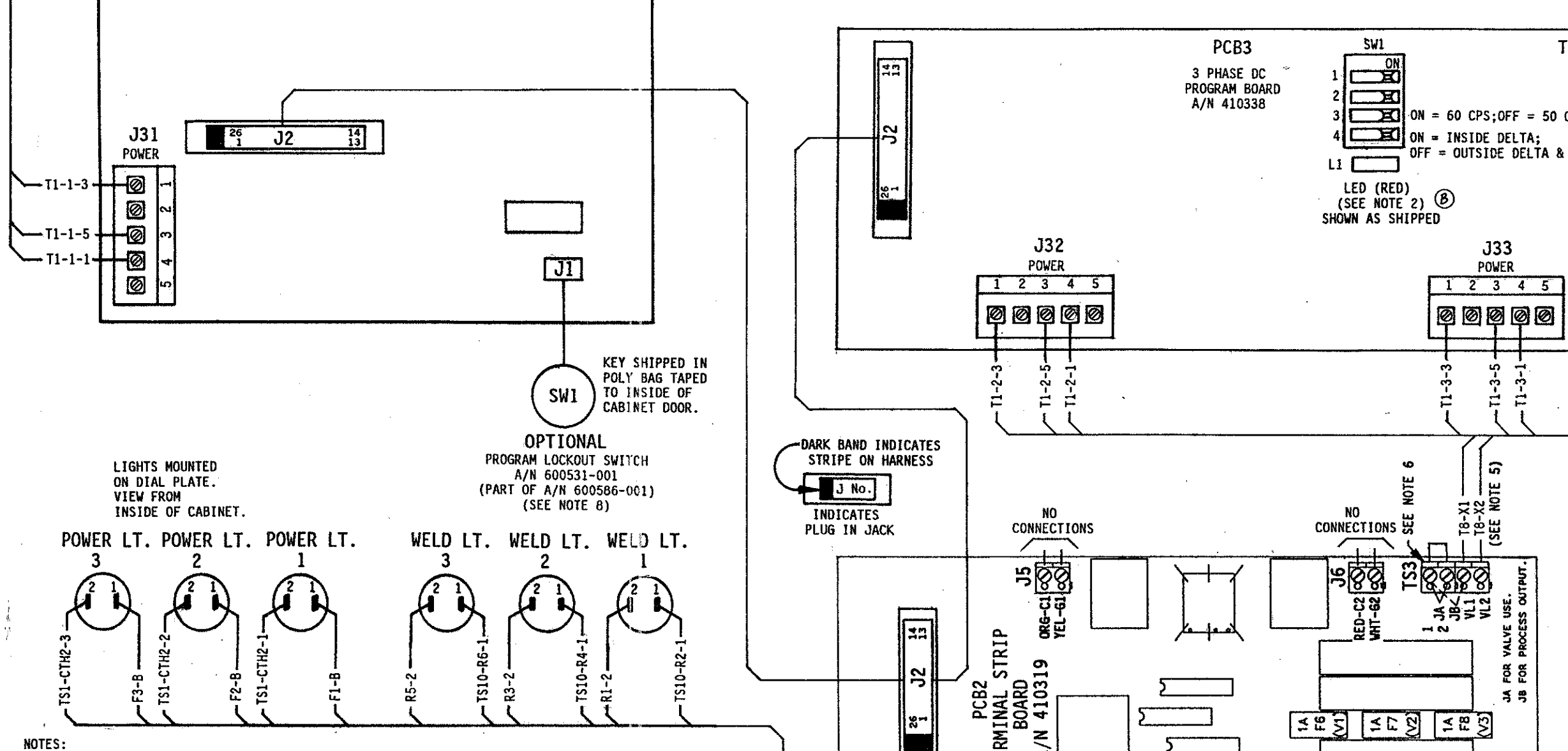


CAUTION Control is shipped wired for 460 VAC Operation and Inside Delta Firing @ 60 CPS (Cycles per Second). Control is Phase Sensitive. Please read all NOTES before installing or operating control. SEE NOTE 2. Consult Factory for instructions for operation on other voltages.

CAUTION - READ MANUAL & ALL NOTES BEFORE INSTALLING OR OPERATING CONTROL. SEE NOTE 1. NO CIRCUIT CALIBRATION OR ADJUSTMENT EVER REQUIRED.



- NOTES: 1. It is recommended that control wiring (i.e.: initiation, pressure switch, etc.) be physically separated from the high voltage wiring (115 volts or higher) ... 2. Control can be configured for Contactors inside the Delta or Outside the Delta and "Y" Firing. ... 3. For Single Stage Pilot Operation - Connect pilot switch to TS1-FS3 & TS1-GND. ... 4. ENTRON supplies Temperature Limit Switch (TLS) P/N 300020. ... 5. VALVE 3 OUTPUT USAGE: TS1-SV5 & TS1-SV6 (Valve 3) can be used for either a Valve output or a Process output. ... 6. WARNING: Use of Jumper "B" bypasses control relay contacts to allow a process output without an initiation. SEE MANUAL.

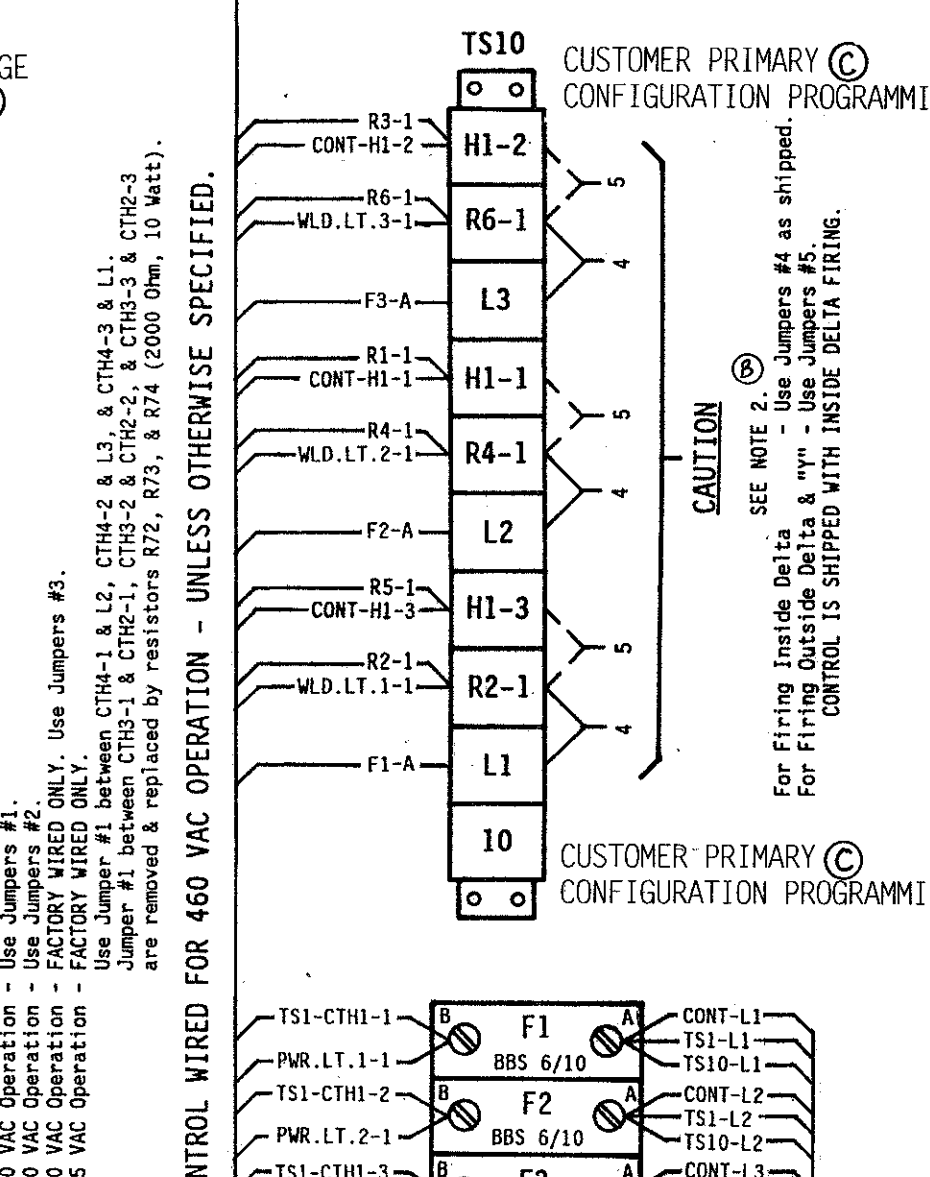
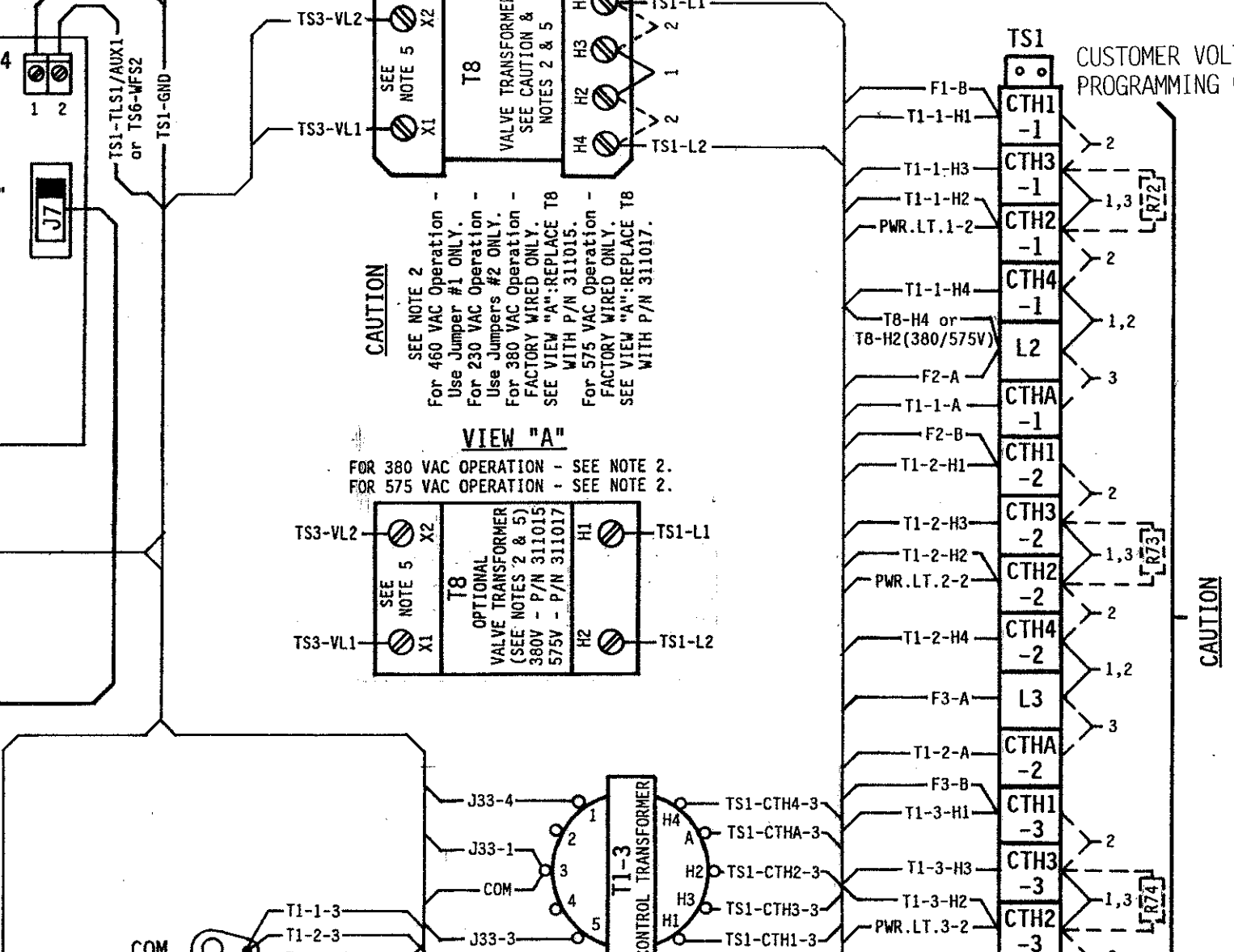
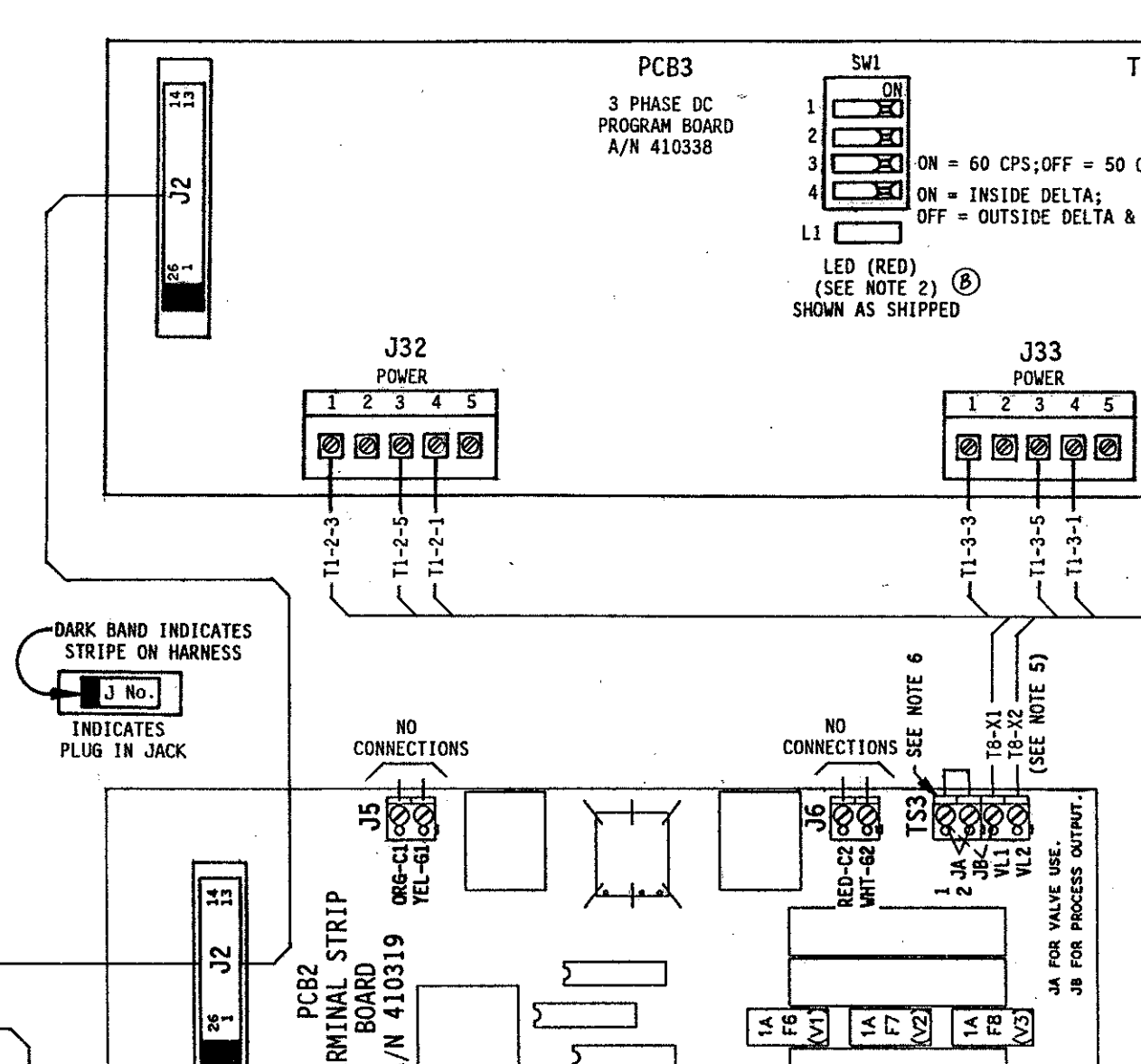
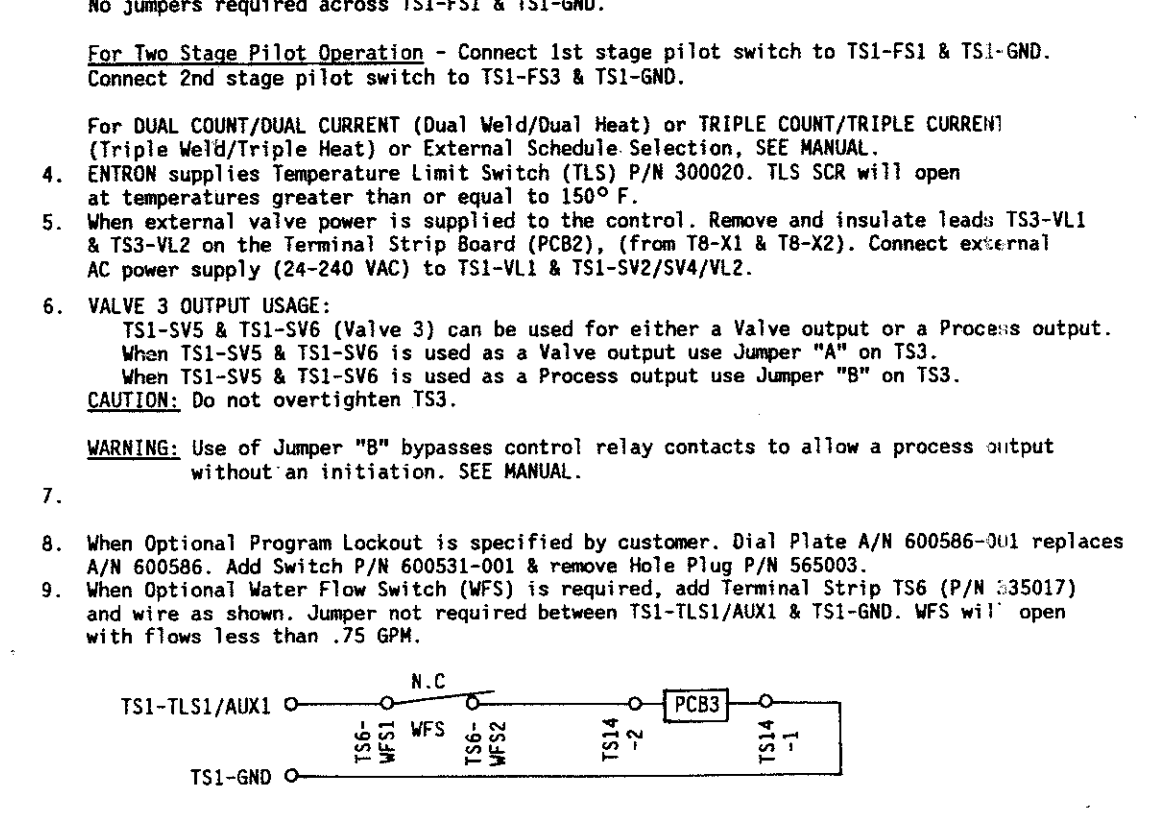


Table with columns: QTY., DESIG., PART NO., DESCRIPTION. Lists parts for EN1003-1200D-T, EN1003-600D-T, EN1003-300D-T.

Table with columns: QTY., DESIG., PART NO., DESCRIPTION. Lists parts for EN1003-1200D-T, EN1003-600D-T, EN1003-300D-T.

Table with columns: QTY., DESIG., PART NO., DESCRIPTION. Lists parts for EN1003-1200D-T, EN1003-600D-T, EN1003-300D-T.

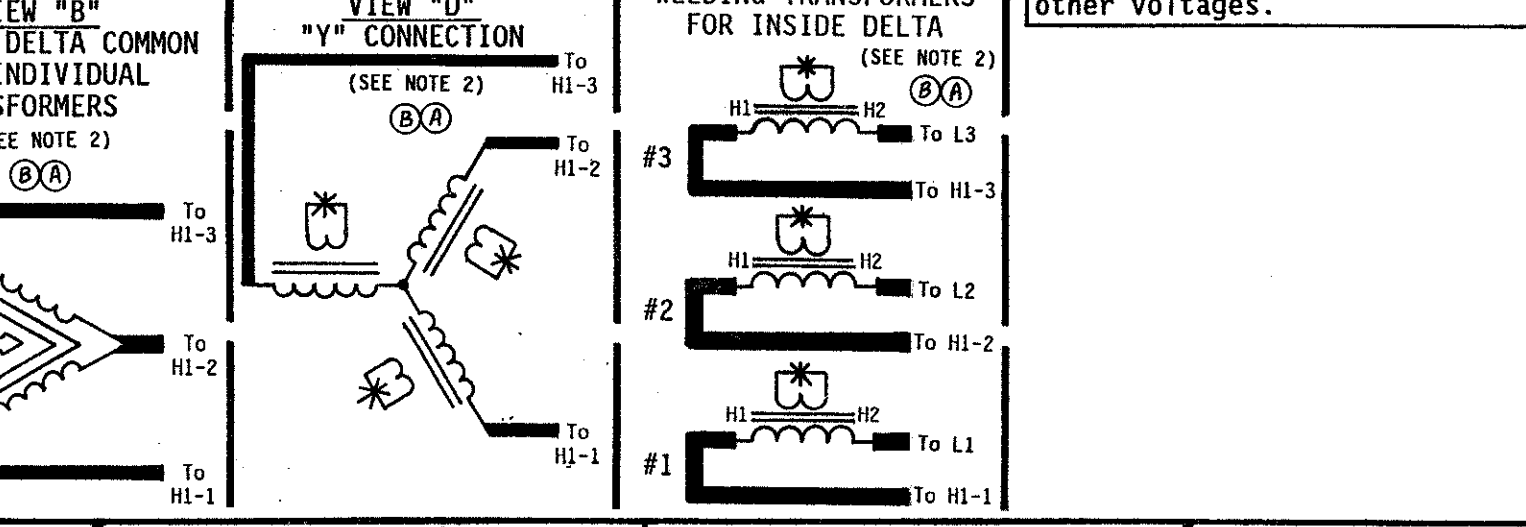
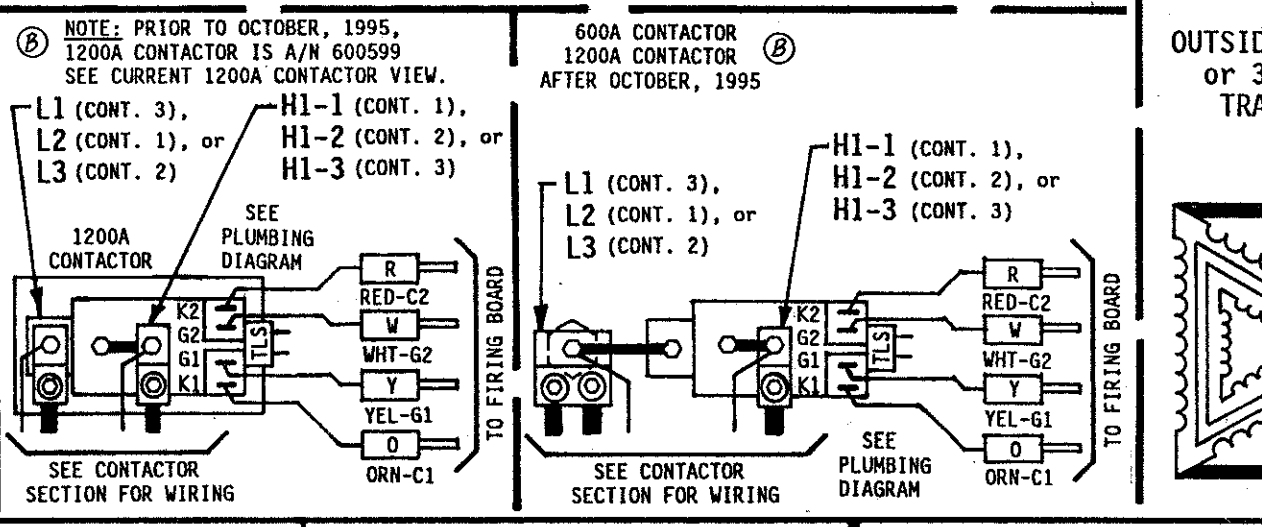
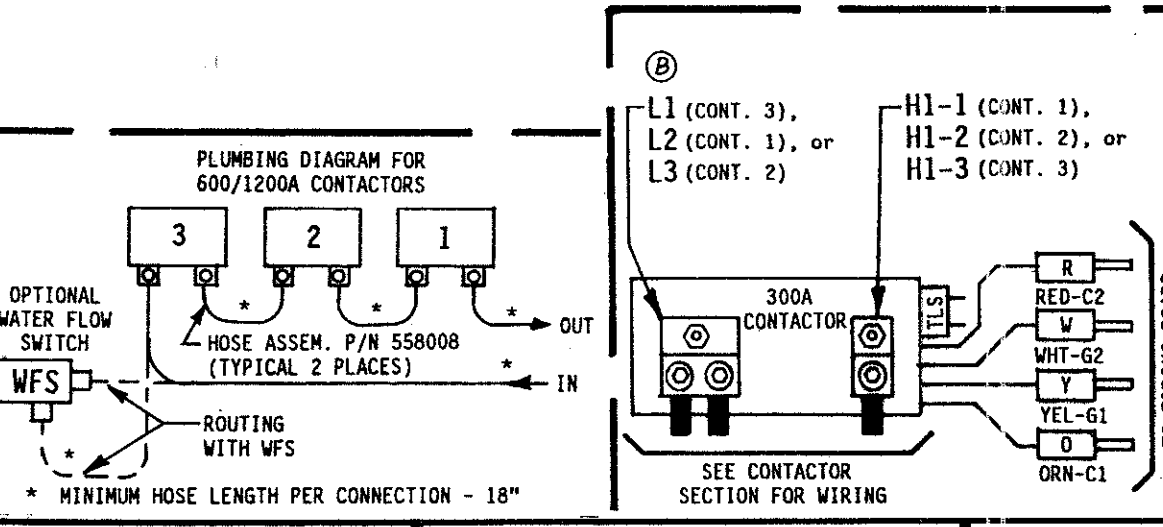
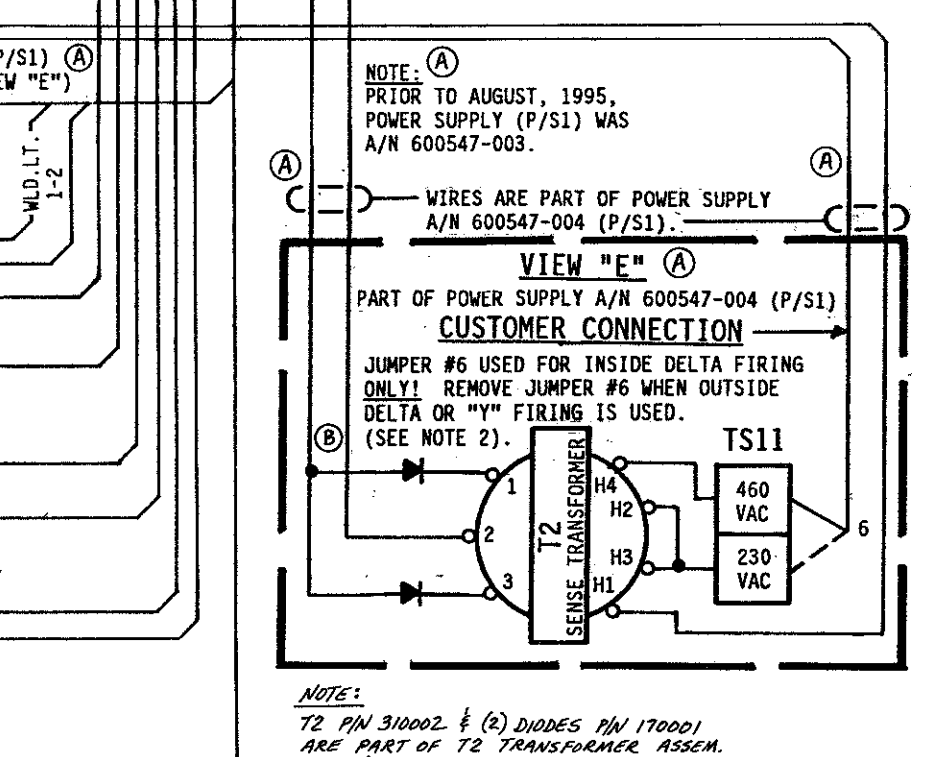
OPTIONAL KEYLOCK when specified by customer. See Note 8. Pack Key in Poly Bag 900148 & attach to Door w/Yellow Tape 900118. Substitution or addition of parts when 380V control is specified. Substitution of part when 380V control is specified. Optional Water Flow Switch Assembly & T56. An additional Thirty-Six inches (36") of hose, P/N 900045 and two (2) hose clamps, P/N 566010 are to be supplied. See Note 9.



CAUTION DO NOT OPERATE WITHOUT WATER ON POWER ON WITHOUT WATER FLOW MAY CAUSE DAMAGE TO CONTROL. TURN POWER OFF WHEN CONTROL IS NOT IN USE.

WARNING: HIGH VOLTAGE VOLTAGES PRESENT IN THIS CONTROL CAN CAUSE SEVERE OR FATAL INJURIES. NOTE: EVEN THOUGH SUPPLY POWER TO THIS UNIT HAS BEEN DISCONNECTED, THERE MAY BE VOLTAGES IN THIS CONTROL ORIGINATING FROM OTHER SOURCES. FOR ALL VOLTAGE POTENTIAL TO BE REMOVED FROM THIS CONTROL, POWER MUST BE REMOVED FROM ALL EXTERNAL CONTROL CIRCUITS CONNECTED TO TERMINALS IN THIS CABINET.

FOR SERVICE ON THIS CONTROL CONTACT YOUR MACHINE DEALER ENTRON CONTROLS INC. DIRECTLY (630) 682-9600 465 EAST RANDY ROAD CAROL STREAM, IL 60188 FAX (630) 682-9374



CAUTION Control is shipped wired for 460 VAC Operation and Inside Delta Firing @ 60 CPS (Cycles per Second). Control is Phase Sensitive. Please read all NOTES before installing or operating control. SEE NOTE 2. Consult Factory for instructions for operation on other voltages.

MANUFACTURING INSTRUCTIONS: See Drawing #496331 for Rear Panel Layout/Assem. of EN1003, "D/T" Cabinet. See Drawing #496362 for "D/T" Cabinet Packing Instructions. See Drawing #440437 for Circuit Breaker to Contactor L1 Cable connection. See Drawing #421294 for Logic Diagram, Contactor & Power Supply, 460 VAC Operation.

Table with columns: REV, AUTH, ORIGINAL RELEASE, DATE, DRAWN, CHK'D, DATE. Includes ENTRON CONTROLS INC. logo and drawing information.