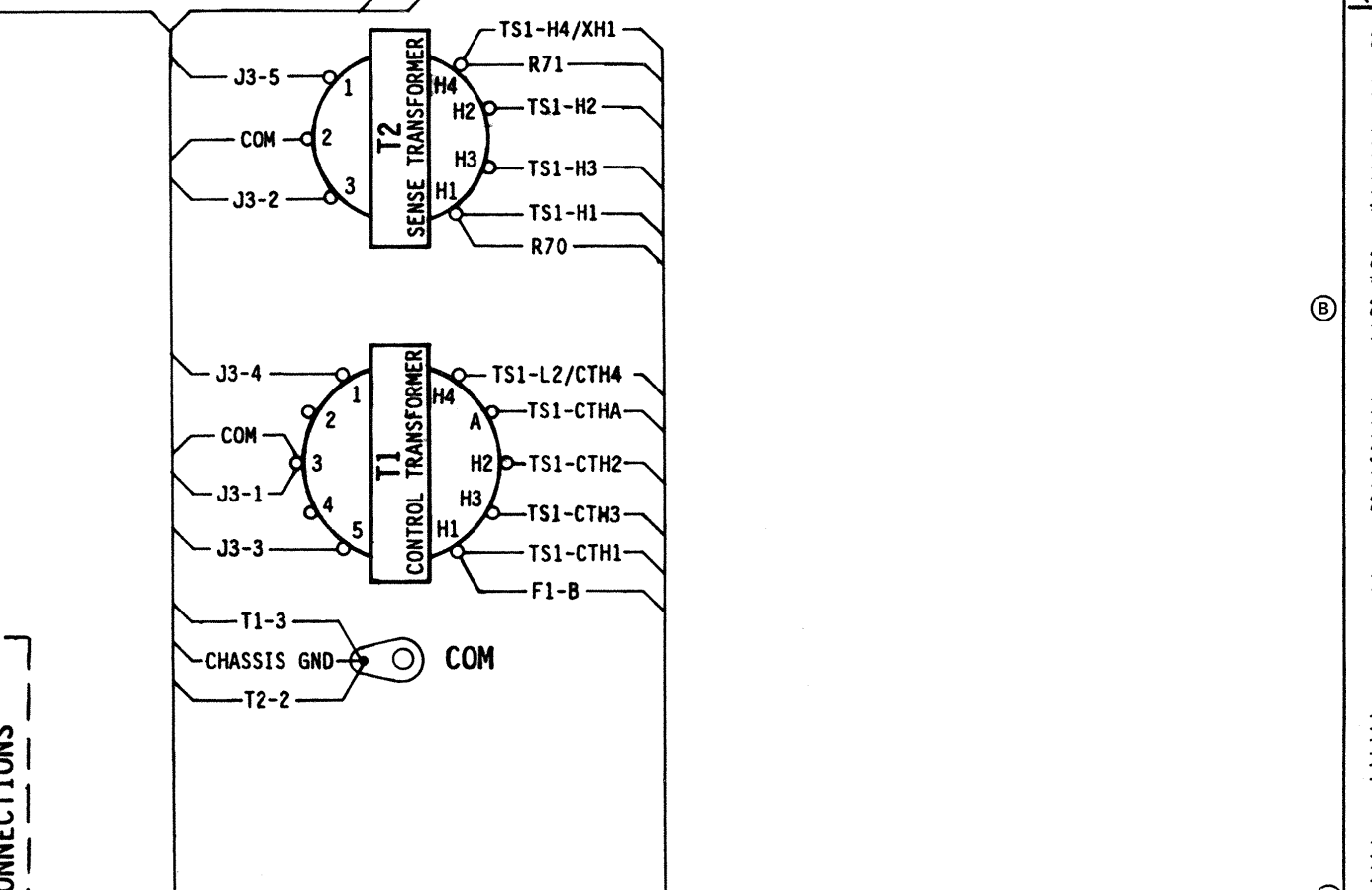
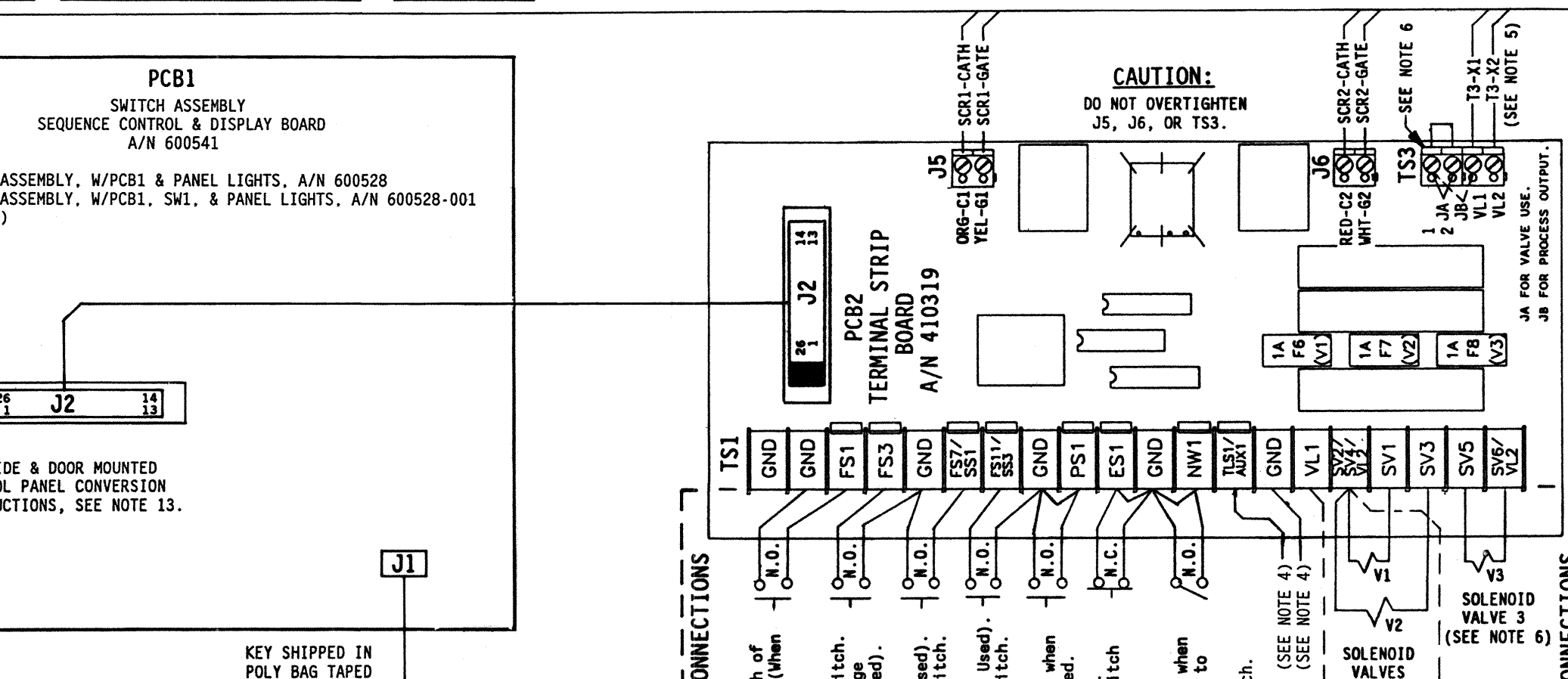
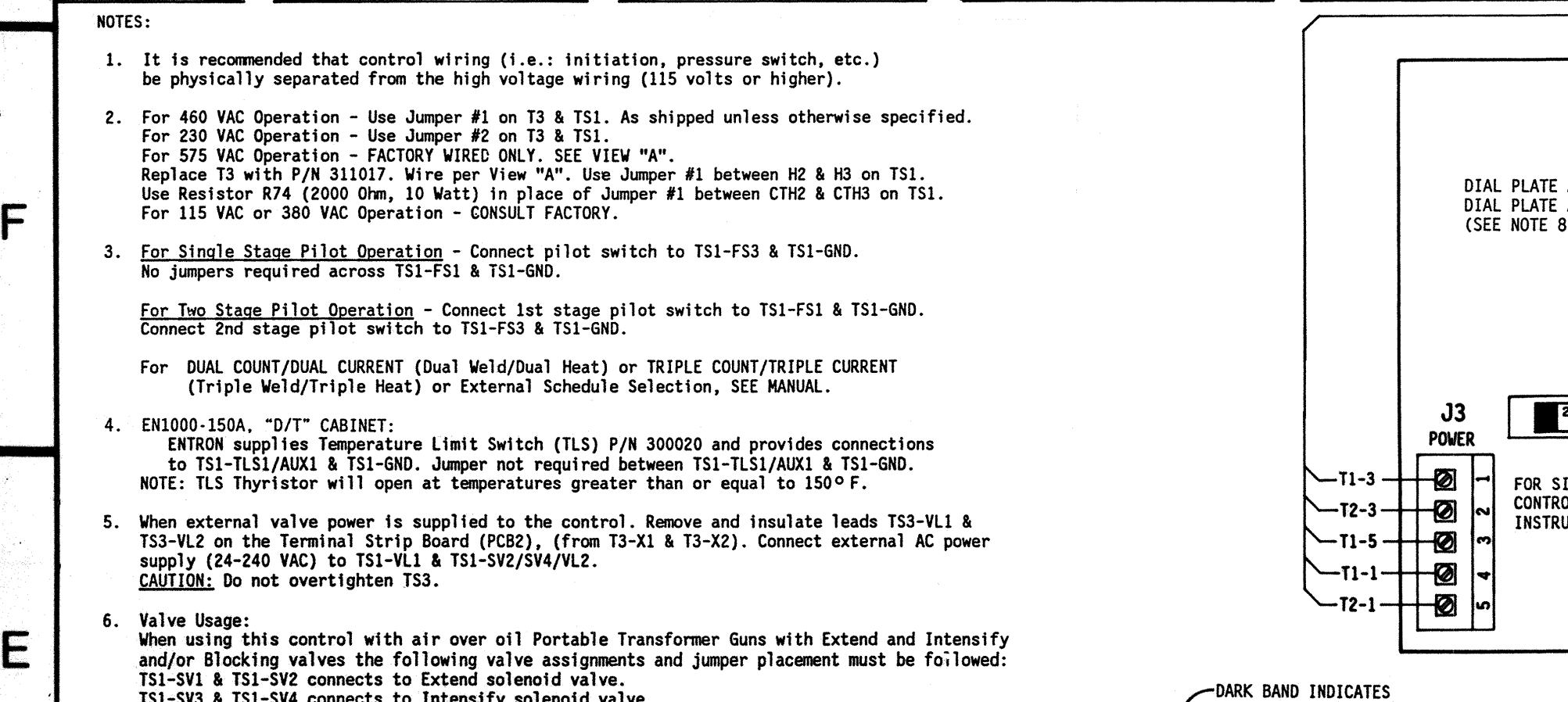


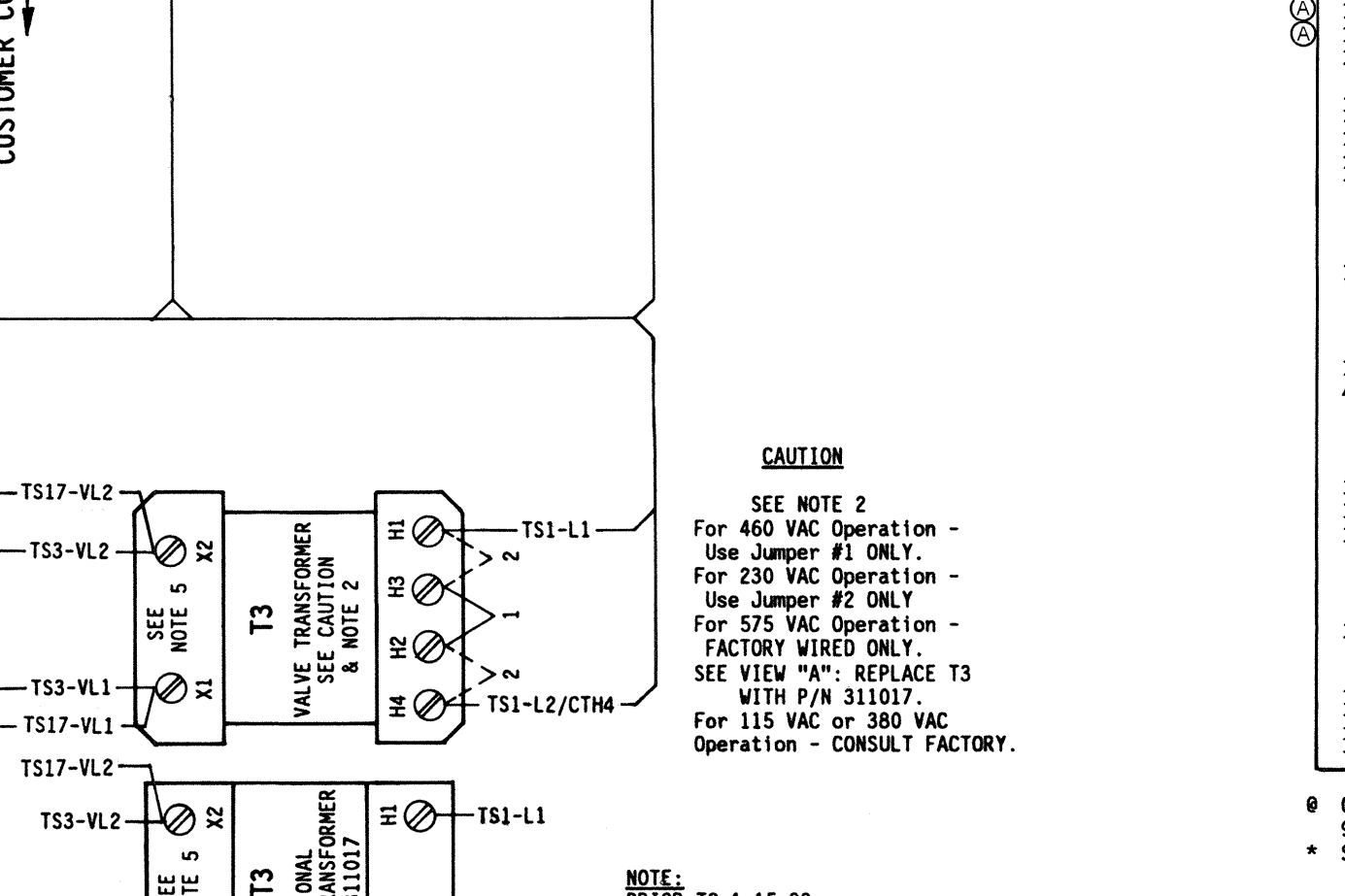
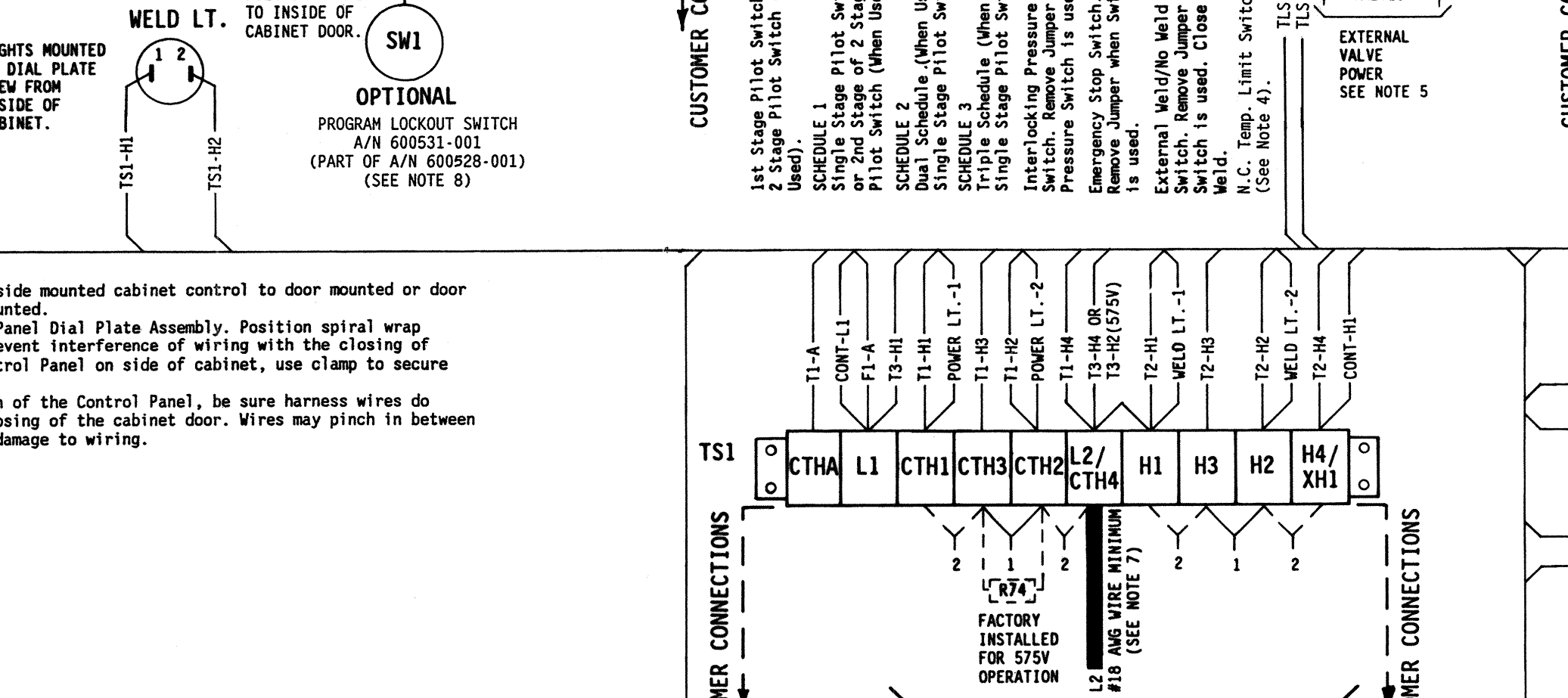
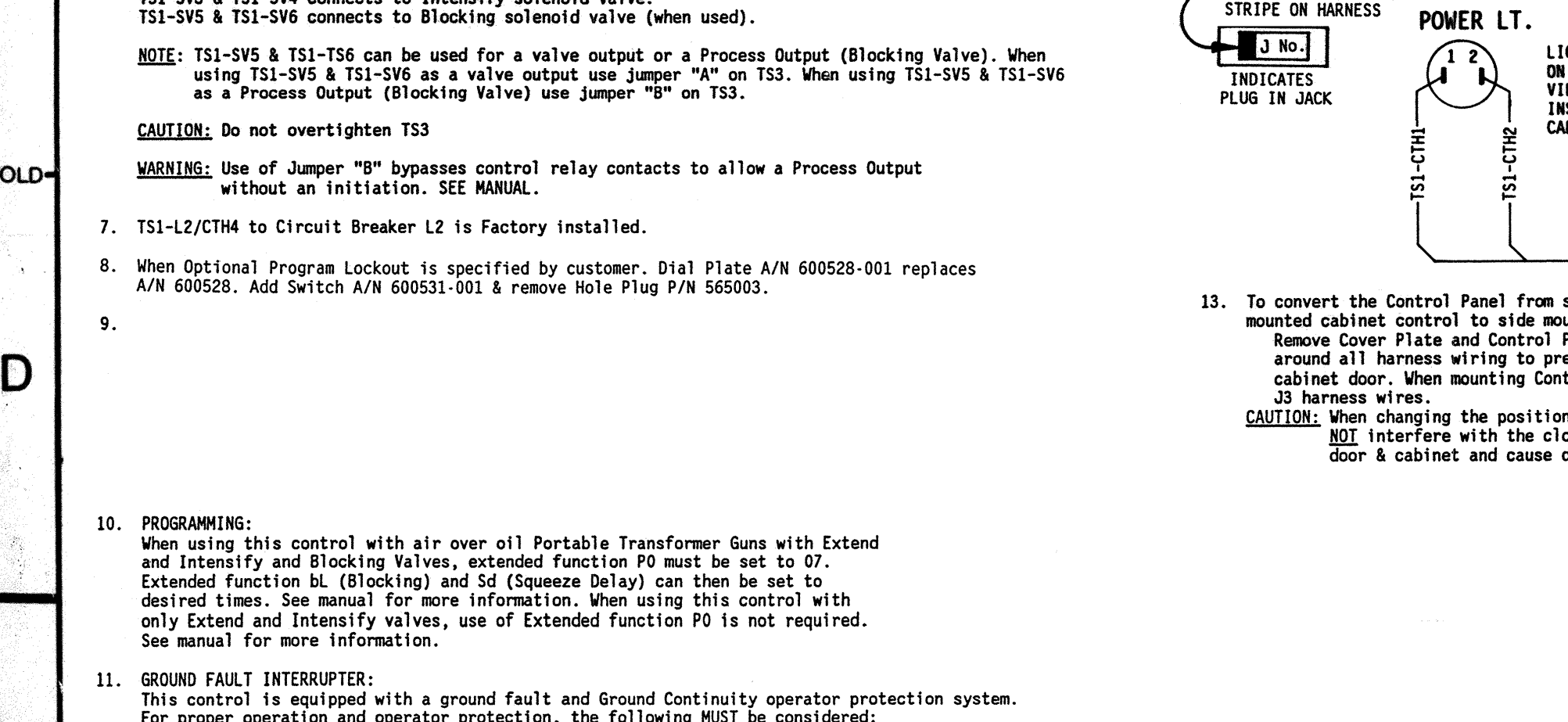
421387 - 005 B

PARTS LIST - CONTROL SECTION			
QTY.	DESIG.	PART NO.	DESCRIPTION
1		600528	Assem., Dial Plate, w/Sw. Assem., EN1000, Consisting of: 600528-001
1	PCB1	600541	Assem., Switch, Sequence Control & Display Board
1	SW1	600531-001	Assem., Switch, Keylock, Momentary, SPST
1		540253	Illustrated Panel, Dial Plate, EN1000
1		515104	Panel, Display Window, Red Filter, EN1000
1		565003	Hole Plug, 3/4" Diam., Black
1	PWR.LT.	305001	Lamp, Neon, Red, 230V
1	WLD.LT.	305002	Lamp, Neon, Clear, 230V
1	J2-J3	323236	Assem., Harness, Control Bd. to Terminal Strip Board
1	J3	322334-006	Assem., Harness, Power, EN1000/GF, D/T Cab.



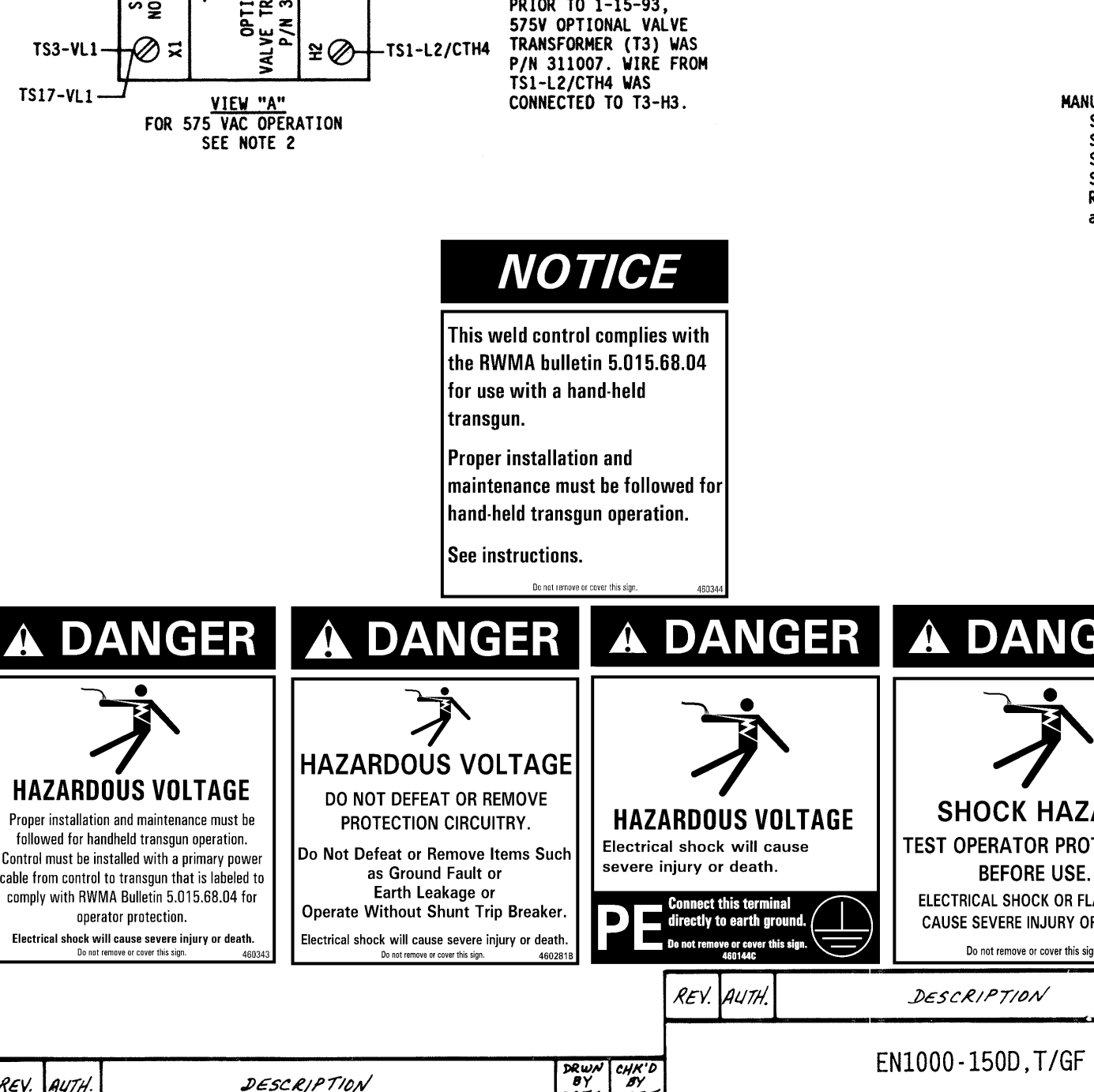
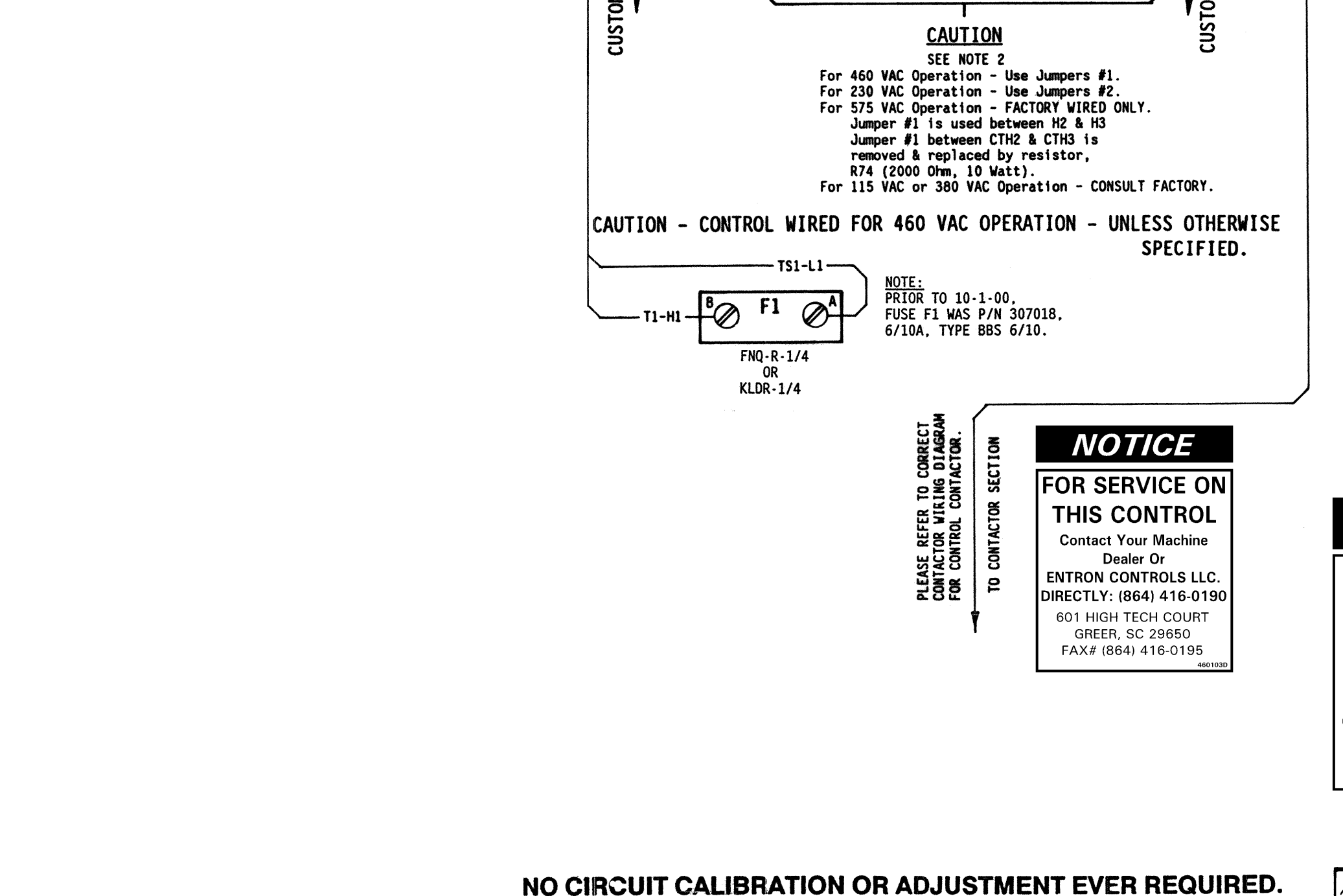
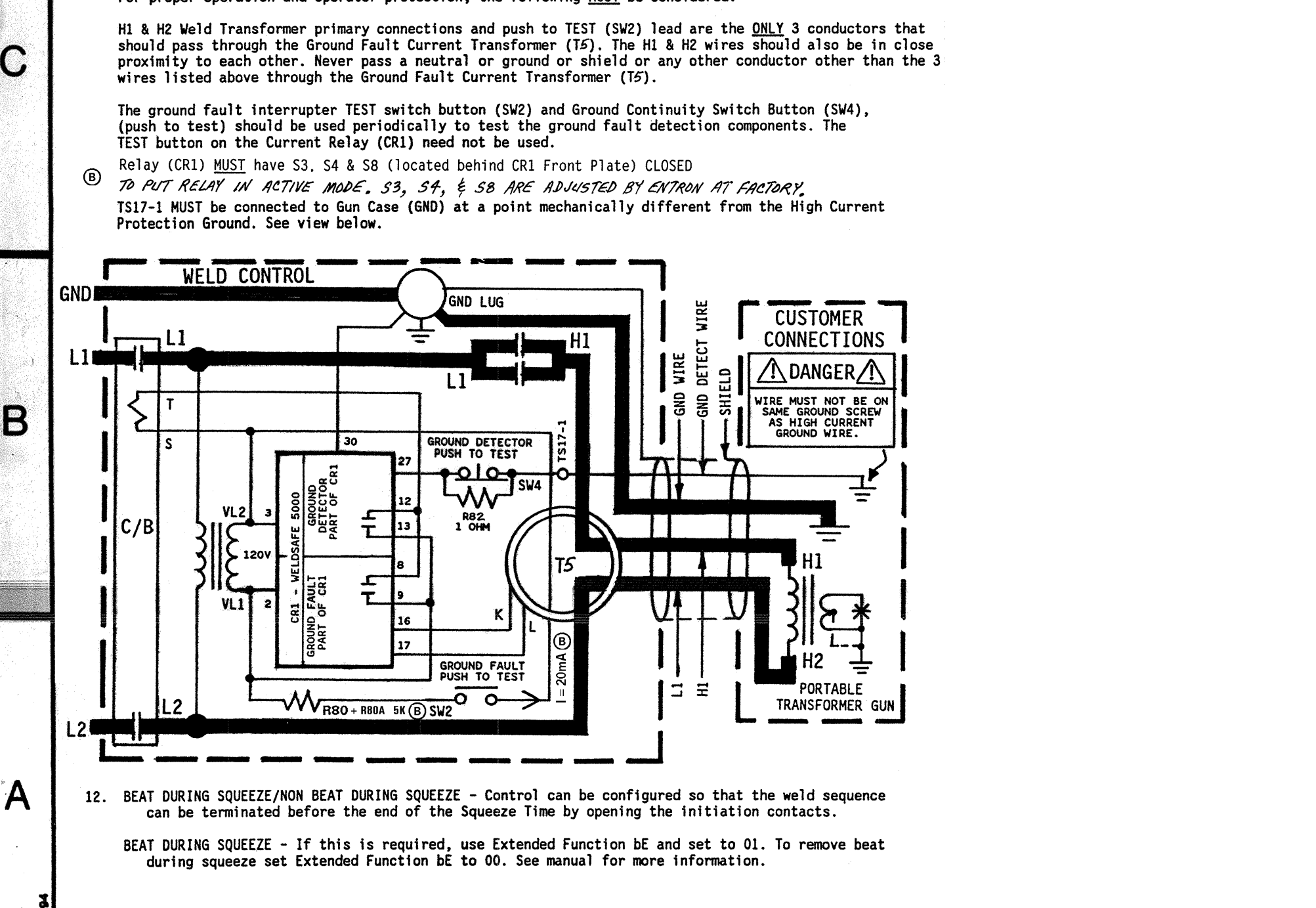
EN1000-150D, T

PARTS LIST - CONTACTOR SECTION			
QTY.	DESIG.	PART NO.	DESCRIPTION
2	TS1,17	335034	Terminal Strip, 10 Pin, (Part of J3 Harness)
1	TS7	335044	Terminal Strip, 2 Pin
1	T1	310001	Transformer, Control, (Part of J3 Harness)
1	T2	310002	Transformer, Sense, (Part of J3 Harness)
1	T3	311002	Transformer, Valve, 150VA
1	T3	311017	Transformer, Valve, 150VA, 575V
2	R70,71	225016	Resistor, Power, Surge, 500 Ohm, 100W
2	R80,80A	600048	Assem., Resistor, Power, 2000 Ohm, 10W, (For 575V)
1	R82	600045	Assem., Resistor, 10,000 Ohm, 1W, (For TS17)
1	R82	600046	Assem., Resistor, 1 Ohm, 1W, (For TS17)
1	F1	308010	Fuseholder, 1 Pole, Mini, 600V
1	F1	307024	Fuse, Control, 1/4A, FNO-R-1/4 or KLDOR-1/4
3	F6,7,8(PCB2)	307022	F6, 7 Amp, Slow Blow, ZAG, (Part of 410319)
1	(R70,71)	325024	Assem., Wire, Surge Resistor, 18 Ga., Black
2	(T3)	325149	Assem., Wire, Valve Transformer, 22 Ga., Black
1		600613	Assem., Contactor, Thyristor, Air, 150A, 460/575V, w/TL5
1		324375	Wire, #4 AWG, 150A Contactor, TS2-H2 to C/B-L2, 28" Long
1		324376	Wire, #4 AWG, 150A Contactor, TS2-H1 to Cont-H2, 18" Long
1		324362	Wire, #4 AWG, 150A Contactor, C/B-L1 to Cont-L1, 23" Long
1	TS5	309514	Ground Fault Current Transformer
1	TS2	600695	Relay, Residual Current & Ground Detection, 22mm w/Manual
1	SW2	302024	Switch, 0.11 Ohm, Push Button, Red, N/O Contact 22mm
1	SW4	302025	Switch, 0.11 Ohm, Push Button, Red, N/C Contact 22mm
1	TL5	300020	Switch, Temperature Limit, (N.C.), (Part of 150A Contactor)
1		346004	Lug, Screw, Chassis GND, 2/0 Wire
1	PCB2	410319	Assem., PCB, Terminal Strip Board, EN1000
1	(PCB2)	510236	Plate, Mounting, Terminal Strip Board
1		525035	Bracket, Mounting, 150A Thyristor Contactor
1	(TS2)	600649	Assem., Standoff, w/Insulator, TS2-H1, Consisting of: 341045
1	(TS2)	341045	Insulator, Insulation between H1 & H2 Lugs, TS2-H1
1	(TS2)	341040-001	Standoff, Modified for Insulator, TS2-H1
1	(TS2)	341040	Standoff, Insulator, TS2-H2
4	(TS2)	346011	Lug, Screw, 1/4 Bolt to #4 AWG Wire, 150A Cont., TS2-H1 & TS2-H2
1		550014	Vault Closing Door Mechanism, "D/T" Cabinet
1		510247-002	Cabinet, Control, Style "D/T", w/CB, Modified for GF
1		510248	Door, Cabinet, Control, Style "D/T"
1	C/B		Circuit Breaker, Pole, Amp, V, w/110 VAC Shunt Trip
1		700120	Manual, EN1000
1		421383	Logic Diagram, EN1000 Control
1		421387-005	Wiring Diagram, EN1000-150/GF, "D/T" Cabinet



EN1000-150D, T

MANUFACTURING INSTRUCTIONS:			
1			See Drawing #600592 for Mechanical Layout/Assem. of EN1000/GF, "D/T" Cabinet.
1			See Drawing #440366 for Inner pack & See Drawing #500016 for "D/T" Cabinet Packing Instructions.
1			See Drawing #440437 for Circuit Breaker to L1 Contactor Cable connections.
1			See Drawing #600526 for Layout/Assem. of Front Panel.
1			Relay (CR1) MUST have S3 & S4 (located behind CR1 Front Plate) closed to put Relay in active mode. Ship with Manufacturer Relay manual.



EN1000-150D, T/GF

REV.	AUTH.	DESCRIPTION	DATE	CHK'D BY	DATE
1					

SCALE: DATE: DRAWN BY: CHK'D BY: APPROVED BY: JDC 5-4-01

TOLERANCE UNLESS SPECIFIED: ANGLES: ± 1/2°; DECIMALS: ± 0.10; FRACTIONS: ± 1/64

WIRING DIAGRAM, EN1000-150/GF, "D" or "T" CABINET, WITH CIRCUIT BREAKER

REV.	AUTH.	DESCRIPTION	DATE	CHK'D BY	DATE
1					

NO CIRCUIT CALIBRATION OR ADJUSTMENT EVER REQUIRED.