

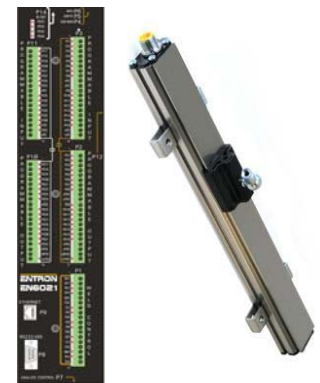
ENTRON™

Controls for Resistance Welding EN6000 Series

Linear Displacement Transducer (LDT) Option



Field installable as a option
to EN6000 Series Controls



Features

- Welding is prevented until Stack-up is correct
- Confirm Displacement for better weld quality
- Stack-up and Displacement reported in Weld Log
- Monitoring windows available for Stack-up and Displacement
- All 100 schedules can have different monitoring windows
- Sensor supplied by ENTRON
- Sensor can also be provided by users
- ENLINK can access all parameters
- Parameters available to Communication Cards via Modbus RTU/TCP and EtherNet/IP
- Advanced Error Outputs
- Ability to adjust Span anywhere in a 6" or 11" range



Full Integration with ENLINK

- Adjust Stack-up and Displacement for each schedule
- Adjust Monitoring Windows
- Calibrate Sensors



ENLINK 6000
Standard with every control !

Exclusive ENTRON two year warranty

EN6000 Series Linear Displacement Transducer (LDT) Option Details

Date: November 2014

Supersedes: April 2014

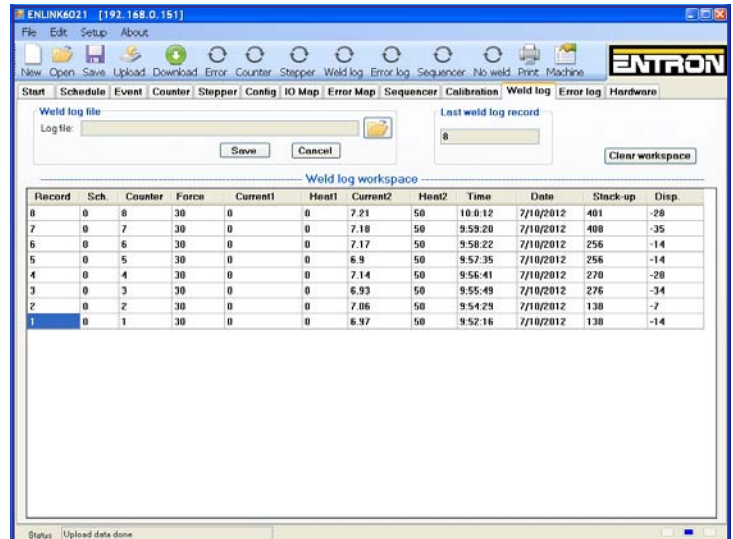
Displayed Parameters

- Stack-up: 0 to 10,000 mils
- Displacement: 0 to 10,000 mils



Schedule Parameters

- Stack-up Monitor: On / Off
- Stack-up High Limit: 0 to 10,000 mils
- Stack-up Low Limit: 0 to 10,000 mils



Calibration

- Linear calibration via 2 setpoints PT1,PT2



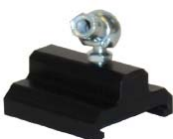
ENTRON-supplied Sensors

730014-014 – 6" LDT Sensor with 2.75" Dead Band including Float Magnet (P/N 318035)

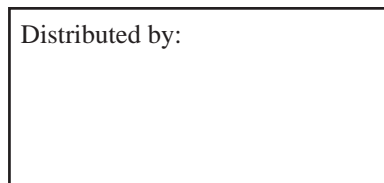
730014-051 – 11" LDT Sensor with 2.75" Dead Band including Float Magnet (P/N 318037)

Both Sensor Assemblies also include:

- 12' Cable (P/N 318036)
- Slide Magnet with Top Swivel (P/N 318038)
- Straight Ball Joint (P/N 318039) for side mounting



Distributed by:



Accuracy

- With ENTRON-supplied Sensor at 6" – 30 mil or better
- With Sensor Span at 1" – 13 mil or better

ENTRONTM

ENTRON Controls, LLC.
1402 S. Batesville Road
Greer, SC 29650
(864) 416-0190
FAX (864) 416-0195
www.entroncontrols.com
e-mail: info@entroncontrols.com

RWMA[®]
MEMBER