

ENTRON™

Controls for Resistance Welding

EN6000 & EN1701 Series

Communication Services Controller (CSC) Option

ENTRON P/N 730014-016

CSC

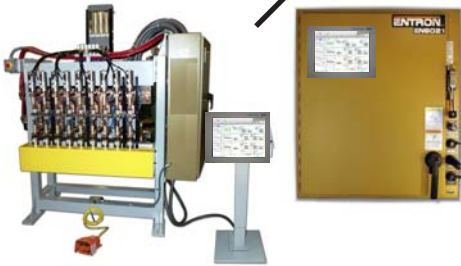


WEB BROWSER BASED ENLINK

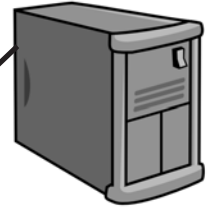
Service allows browser-based devices secure access to web-based emulation of ENLINK

Connect to multiple EN6000 Series and/or EN1701 Series Controls

Put ENLINK Where You Want it!



WELD LOG FTP SERVICE



Service allows download of WELD LOG and ERROR LOG data

Remotely read EN6000 Series and/or EN1701 Series Controls' weld logs for manual or automated log storage, analysis or required lot reports.

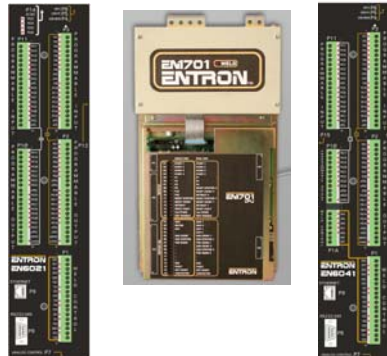


ControlLogix Bridge

Service translates E/IP Explicit or Modbus TCP to E/IP

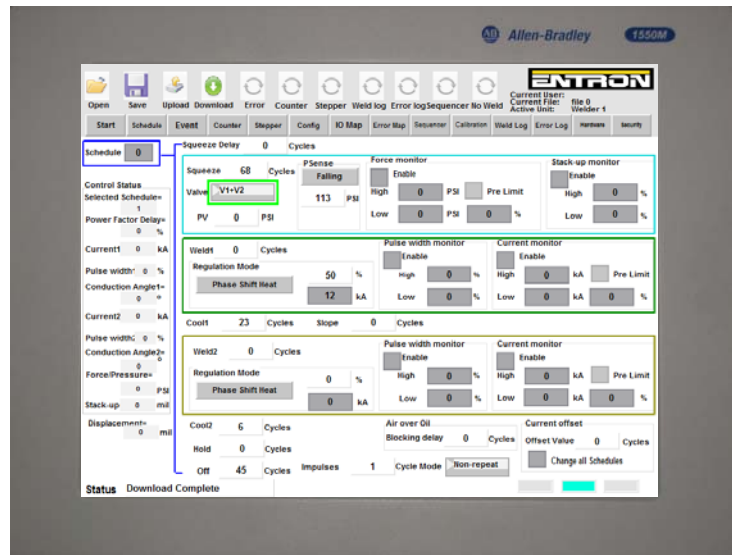
Allows simple interface to EN6000 Series and/or EN1701 Series Controls.

ENTRON provides a supplied example routine to read and write schedule data, weld feedback and status, read and write weld control I/O functions, and use weld control weld inputs and outputs as PLC remote I/O.



ENLINK Web

- Use any web-based browser to reach multiple controls connected to the CSC.
- Additional security enables programming of parameters from operators to administrators. Ability to hide menu items.
- Connect a touch screen monitor to the CSC and place ENLINK where you want it.
- Basic control operation without RPP2 needed.
- Personalize screens to match machine functions.
- Backup Weld Schedules to the CSC.
- Review and export Weld and Error Logs.

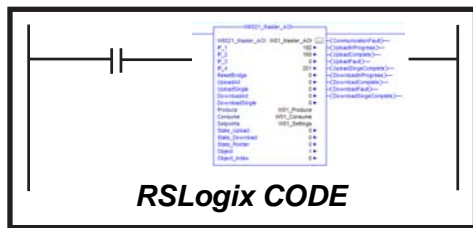


OPTIONAL MONITORS

Attach Touch Screen Monitor to Weld Control with CSC to add access to ENLINK Web.

Door-Mounted Monitor	730014-050
Remote Monitor with 25' Cable	730014-017
Remote Monitor with 50' Cable	730014-018
Remote Monitor with 100' Cable	730014-019

ControlLogix Bridge

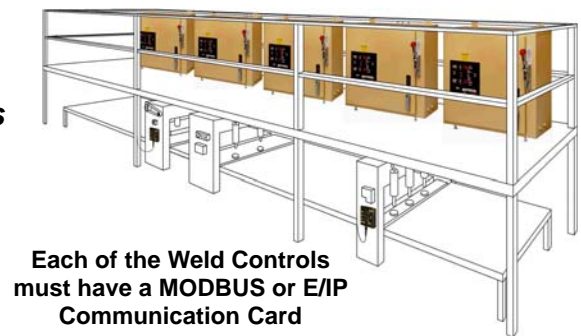


Add the supplied example routine to your RSLogix Code

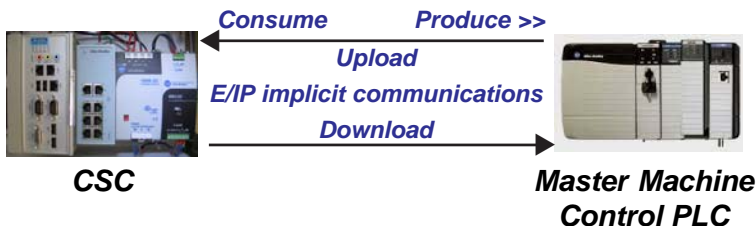
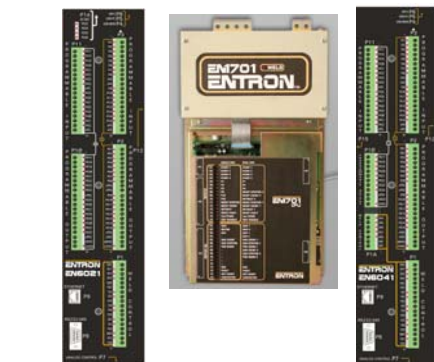


Machine control RSLogix code can access 8000+ tags from multiple EN6000 Series and/or EN1701 Series Controls including Weld Current, Force, Displacement, Schedule Data, and weld control I/O. Unused I/O can be used for Remote I/O.

... Connect Weld Controls as needed



Each of the Weld Controls must have a MODBUS or E/IP Communication Card



Distributed by:

ENTRONTM
 ENTRON Controls, LLC.
 1402 S. Batesville Road
 Greer, SC 29650
 (864) 416-0190
 FAX (864) 416-0195
 www.entroncontrols.com
 e-mail: info@entroncontrols.com

