

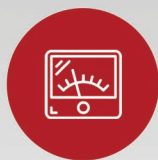


## Hi5 WELD MONITOR

The Hi5 Weld Monitor enables operators to monitor, visualize, and analyze key welding variables during the welding process to ensure quality production.

The Hi5 measures current, voltage, resistance, displacement, and force. The system stores the data of each weld cycle to support comparison of each weld. It features a simple and intuitive user friendly interface and color touch panel display.

### MEASURES



#### CURRENT

Current flowing through the welded parts  
(can be monitored DC or AC)



#### VOLTAGE

Voltage applied to both sides of the welded parts



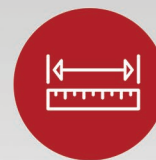
#### RESISTANCE

Change in internal resistance of the welded parts



#### FORCE

Force applied on both sides of the welded parts



#### DISPLACEMENT

Displacement values of the welded part

### KEY FEATURES

- ✓ Measures all current types: AC, DC (MF & 3 Phase), and Capacitor Discharge
- ✓ Simultaneously monitors 5 key welding variables every millisecond with a high-level of accuracy
- ✓ Real-time clock feedback results on the welding process
- ✓ High level monitoring with alarm output
- ✓ Touch Screen interface with clear curve display and user friendly zooming & automatic scaling
- ✓ Weld result Data storage and export to external devices
- ✓ Ethernet (TCP/IP), Serial, USB, & 4G communication
- ✓ Multi-language support: English, Korean and Chinese



#### QUALITY ASSURANCE

With the key variables monitored, you can detect bad welds in real time to minimize waste & rework.



#### REDUCED COSTS

Reduces the need for costly quality control inspections.



#### DETECT EQUIPMENT ISSUES

Detect and pinpoint equipment issues before they impact production.



#### OPTIMIZE YOUR WELDS

The data empowers user to optimize the weld programs to improve quality and throughput

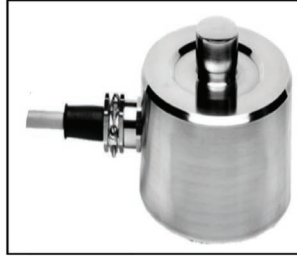
### ACCESSORIES



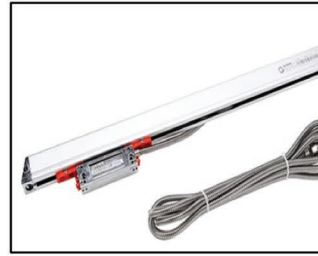
+ Current Sensor



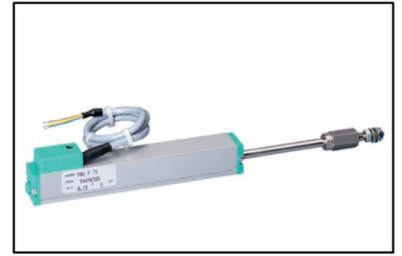
+ Voltage Sensor



+ Force Sensor



+ Magnetometer



+ Linear Potentiometer

## TECHNICAL SPECIFICATIONS

MODEL	HRC670
Power supply requirements	24V DC 2A
Maximum recording time	MF DC and AC: 2000ms, capacitor discharge and pure pressure: 5000ms
Current measurement levels	6 kA, 20 kA, 60kA, 200 kA, 1000kA – accuracy $\pm 1\%$
Voltage measurement levels	$\pm 20$ V, $\pm 60$ V
Pressure measurement levels	2KN, 10KN, 20KN, 50KN (Also available in units kgf and lbf)
Sampling rate	100 to 100kHz Sa/S
Display	10.4" TFT LCD Resolution 1024x768
Communication interface	Ethernet, 4G/5G wireless communication, RS-232, RS-485
Operating temperature	-10°C to 45°C
Operating humidity	$\leq 75\%$
Data storage	> 8 GB

## PRODUCT DIMENSIONS

**Dimensions (L x W x H)**  
10.98 in x 1.95 in x 9.53 in  
(279 mm x 49.6 mm x 242 mm)

**Weight**  
5.69 lb (2.58kg)



**ENTRON™**  
Helping Manufacturers  
Worldwide Weld Better!

