

1

2

3

4

5

6

7

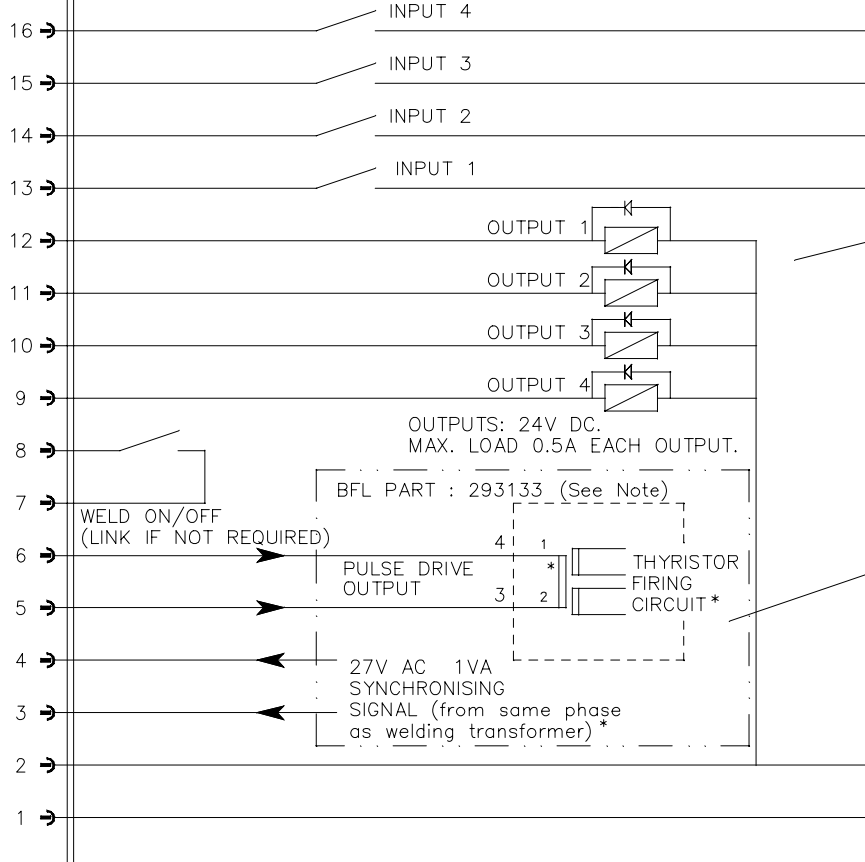
8

9

# WS500 TIMER

P1

INPUTS: 24V DC  
MAX. 10mA EACH INPUT.



The functions assigned to each input and output depends on the setting of the timer configuration type. See user documentation for details.

A suitable sync/firing card is available from British Federal Pt. No. 293133

USERS 24V DC POWER SUPPLY:  
0.5A REQUIRED BY TIMER,  
PLUS CURRENT DRAWN BY  
LOADS CONNECTED TO OUTPUTS.\*

Contact British Federal sales  
for a suitable power supply.

DATE:	1-2-2000
DRAWN:	K.C. / MJD
CHECKED:	

BRITISH  
FEDERAL LTD

TITLE: WS500  
USERS CONNECTIONS

DRAWING No:	3U3046
ISSUE No:	3
SHEET No:	1 of 1