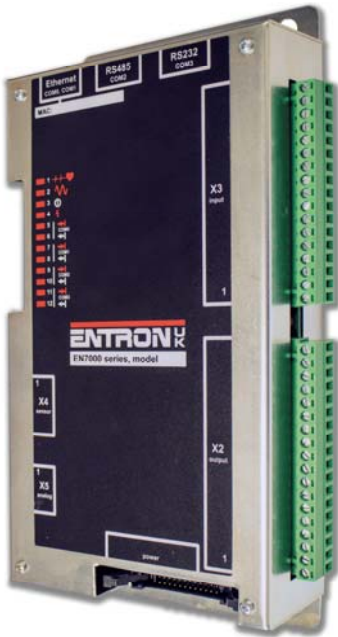




EN7000 Models 1 & 2

SINGLE PHASE AC Constant Current Control / Proportional Force Control for 50/60 Hz spot/projection welding applications.



MODEL 1

- Gear plate mount / Remote mount.
- Pendant , Modbus , NetFlash programming.

FEATURES

- 256 weld programs (schedules).
- 2 Weld Intervals : Pre-heat + Main weld.
- Single SCR and main valve (WAV) output.
- 7 auxiliary valves under program control.
- 16 Inputs/ 16 Outputs (short circuit protected) .
- Secondary or Primary current regulation.
- Ethernet (2-ports).
- RS232 port.
- RS485 port.
- Analog Port connects to Proportional Valve for weld force control , or can output a measured current waveform.
- Electrode manager (Stepper Functions) .
- Current and force monitor.



MODEL 2

- Panel mount.
- Touch display, Pendant, Modbus, NetFlash programming.



Complete EN7000 Model 1 system, suitable for applications up to 150 kVA.

Timing Parameters

Presqueeze
Squeeze
Pre-heat
Cool1
Upslope
Main heat
Cool2
Downslope
Pulses
Hold
Off

Control Features

Aux valve control
Current monitor
Force monitor
Spot weld



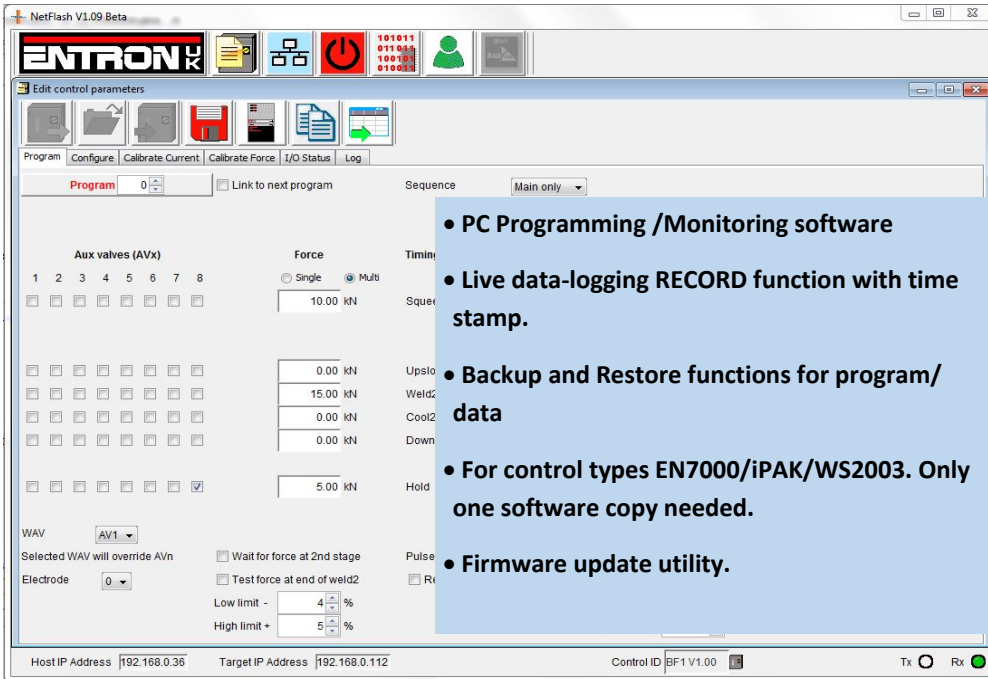
Complete EN7000 Model 2 system, suitable for applications up to 150 kVA.



EN7000 Models 1 & 2

NetFlash PC Software for Ethernet (option)

Easy to use networked PC. Access iPAK, WS2003, EN7000



- PC Programming /Monitoring software
- Live data-logging RECORD function with time stamp.
- Backup and Restore functions for program/ data
- For control types EN7000/iPAK/WS2003. Only one software copy needed.
- Firmware update utility.



WSP/3 Pendant (option)

Easy, intuitive 4 line display

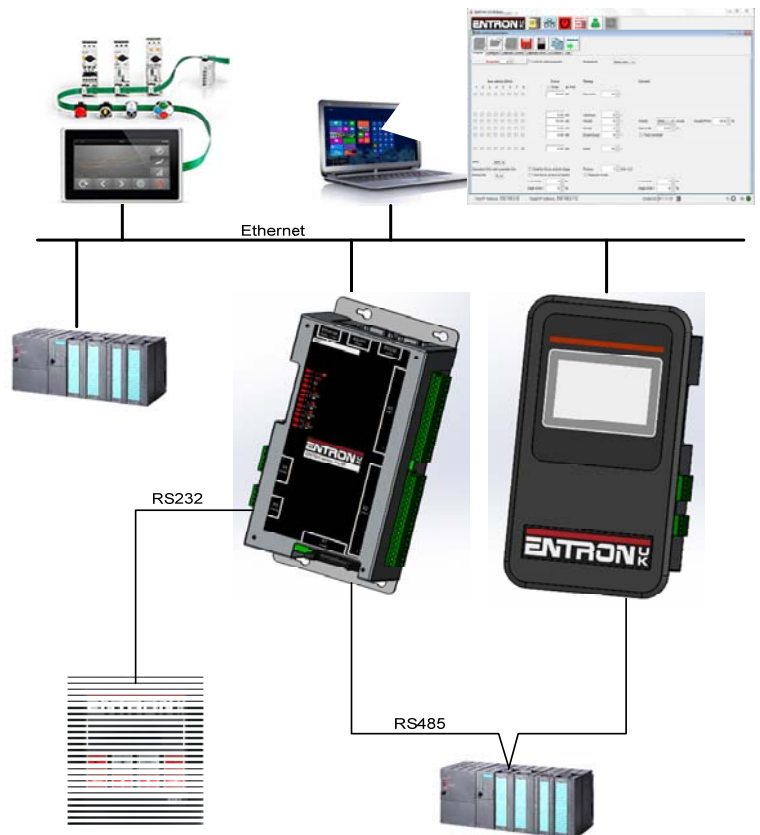
MULTIPLE COMMUNICATIONS SUPPORT :

Modbus-TCP/IP (Ethernet), Modbus-RTU (RS485), RS232 all built-in. Ethernet/IP and other Fieldbuses supported via external adapter option.

MULTIPLE CONTROL METHODS: Discrete I/O plus analog 0-10V, Modbus-TCP/IP (Ethernet), Modbus-RTU (RS485)

PROGRAMMING METHODS : Pendant (RS232), HMI RS485 , HMI or PC Software Ethernet TCP/IP.

DATA-LOGGING: Internal data-logging up to 6000 records. Data can be recorded to hard drive through NetFlash.



BF Entron Ltd. England.

Tel: +44 (0)1384 455401

Entron Controls LLC. USA.

Tel: 864-416-0190

Entron Controls De Mexico.

Tel: +52 (55) 5819 5668

www.entroncontrols.com

Issue 1.3