

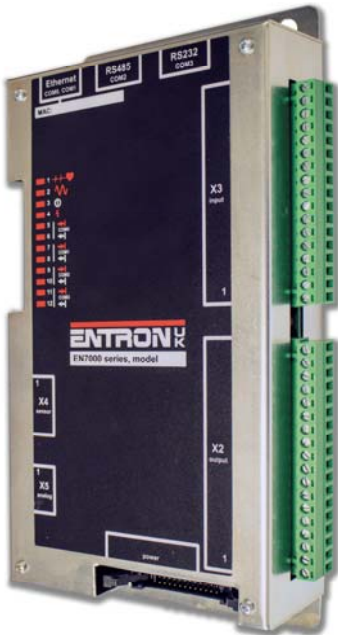


## EN7000 Models 3 & 4

SINGLE PHASE AC and 3-PHASE DC constant current control and proportional force control for 50/60 Hz spot, projection and Seam welding applications.

### FEATURES

- 256 weld programs (schedules).
- 3 weld Intervals — Pre-heat + Main weld + Post heat.
- Cascade / multivalve operation.
- Up to 8 SCR and 8 main valve (WAV) outputs.
- 7 auxiliary valves under program control.
- 16 Inputs/ 16 Outputs (short circuit protected ).
- Secondary or Primary current regulation.
- Ethernet (2-Ports).
- RS232 Port.
- RS485 Port.
- Analog Port connects to Proportional Valve for weld force control , or can output a measured current waveform.
- Force profiling.
- Electrode manager ( Stepper functions) for up to 8 electrodes.
- Current and force monitor.
- Seam mode—change programs ‘on the fly’, up to 8 MOTOR command outputs.



### MODEL 3

- Gear plate mount / Remote mount.
- Pendant , Modbus , NetFlash programming.



### MODEL 4

- Panel mount.
- Touch display, Pendant, Modbus, NetFlash programming



Example: Complete EN7000 Model 3 system, suitable for applications up to 150 kVA.

Timing Parameters	Control Features
Presqueeze	8 valve control
Squeeze	Current monitors
Pre-heat	Force monitors
Cool1	Spot or Seam weld
Upslope	Cascade Welds
Main heat	MultiValve Welds
Cool2	3-phase DC
Downslope	
Post-heat	
Pulses	
Hold	
Off	



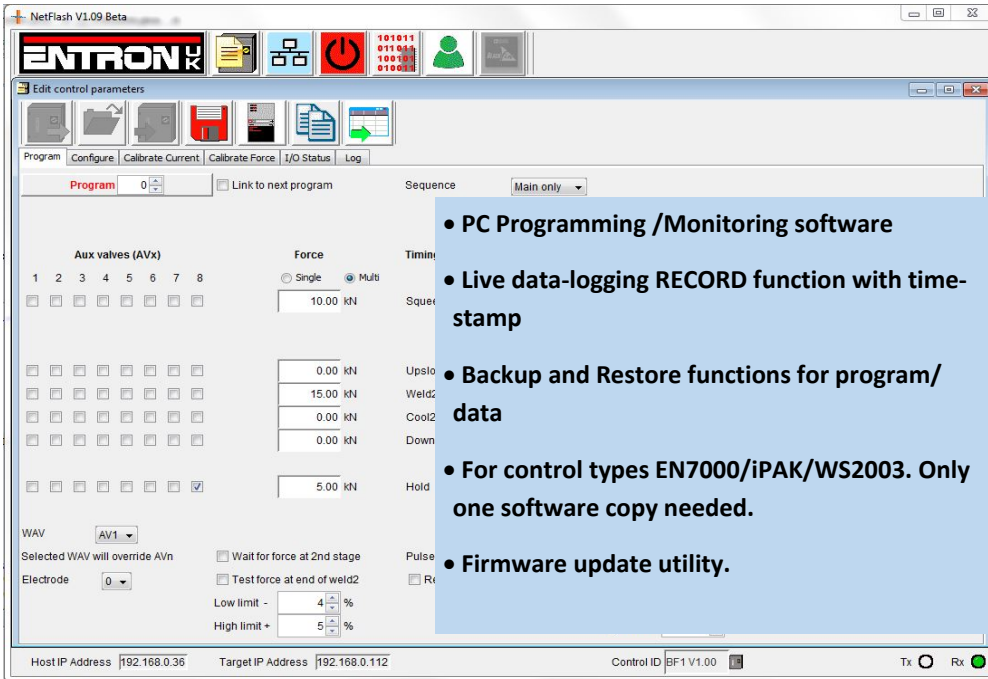
Example: Complete EN7000 Model 4 system, suitable for applications up to 150 kVA.



# EN7000 Models 3 & 4

## NetFlash PC Software for Ethernet (option)

Easy to use Networked PC. Access iPAK, WS2003, EN7000.



- PC Programming /Monitoring software
- Live data-logging RECORD function with time-stamp
- Backup and Restore functions for program/ data
- For control types EN7000/iPAK/WS2003. Only one software copy needed.
- Firmware update utility.



## WSP/3 Pendant (option)

Easy, intuitive 4 line display

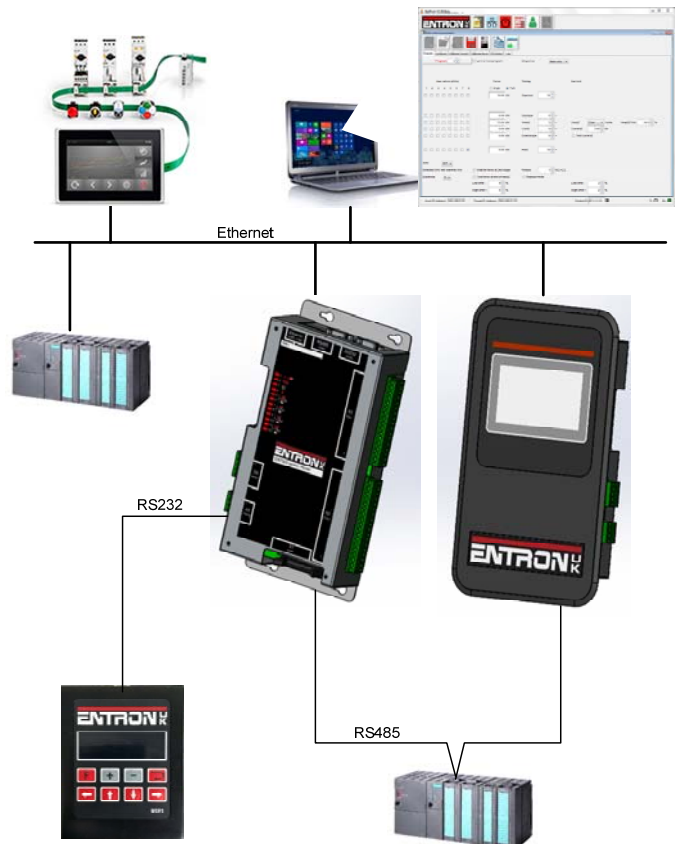
### MULTIPLE COMMUNICATIONS SUPPORT :

Modbus-TCP/IP (Ethernet), Modbus-RTU (RS485), RS232 all built-in. Ethernet/IP and other Fieldbuses supported via external adapter option.

**MULTIPLE CONTROL METHODS:** Discrete I/O plus analog 0-10V, Modbus TCP/IP (Ethernet), Modbus-RTU (RS485).

**PROGRAMMING METHODS :** Pendant (RS232), HMI RS485 , HMI or PC software Ethernet TCP/IP.

**DATA-LOGGING (Spot mode):** Internal data-logging up to 6000 records. Data can be recorded to hard drive through NetFlash.



BF Entron Ltd. England.

Tel: +44 (0)1384 455401

Entron Controls LLC. USA.

Tel: 864-416-0190

Entron Controls De Mexico.

Tel: +52 (55) 5819 5668

[www.entroncontrols.com](http://www.entroncontrols.com)

Issue 1.3