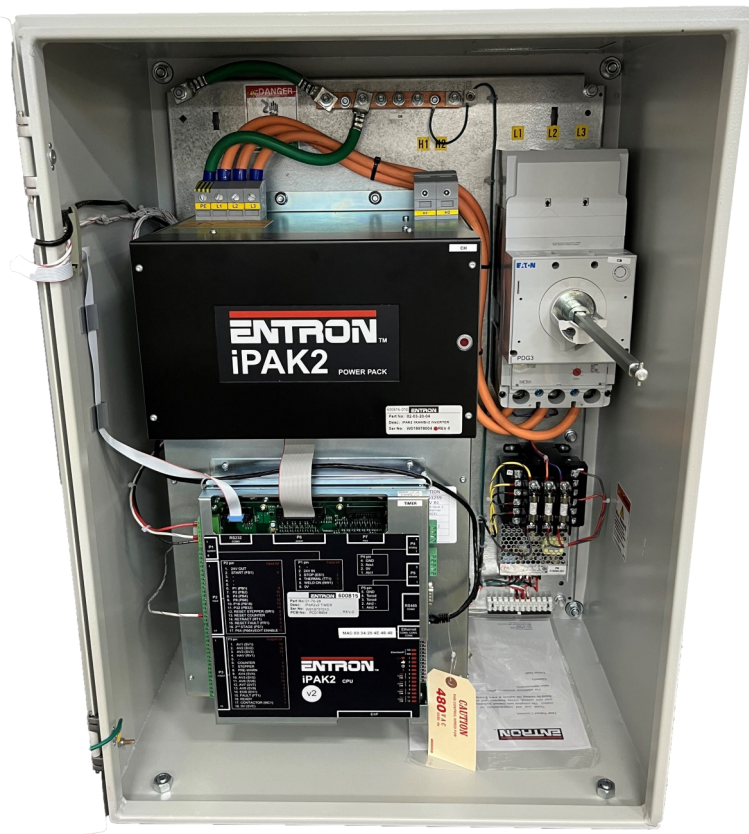


ENTRON™

iPAK2v2-1000 Amp BCM Mid Frequency Weld Control



Introducing the **iPAK2v2 1000 Amp BCM**. Assembled and shipped from the U.S.A. The iPAK2v2 BCM Series is a Full Featured Mid-Frequency Weld Control built to last and can handle your Resistance Welding needs.

Whether it is SPOT Welding, SEAM Welding, PROJECTION Welding or RESISTANCE HEATING, ENTRON CONTROLS can provide you with the MFDC weld control that fits your application.

KEY FEATURES INCLUDE:

- 256 Weld Programs. Spot or Seam
- 3 Weld Intervals (Pre-Heat + Main Heat + Pulsation + Post Heat)
- Secondary or Primary Constant Current Regulation
- Seam mode—change programs ‘on the fly’, up to 8 motor command outputs
- Programmable force within programs w/ Analog Valve control
- Current Monitor—Force Monitor
- Conduction Monitoring for Wear or Shunting
- Data Logging up to 6000 records
- UL Rated—Door interlocking breaker
- Ethernet IP— Ethernet TCP/IP (Modbus)
- RS232 and RS485 Port Connections
- Door Mounted Operation Mode Switch (program lockout switch and weld/no weld)
- 16 inputs / 16 outputs (short circuit protected and dedicated function)
- Analog Heat control configuration
- 7 Auxiliary Valves/Events access during sequence
- Forge Delay assign to available AUX Outputs
- Door mounted Ethernet/RS232 access

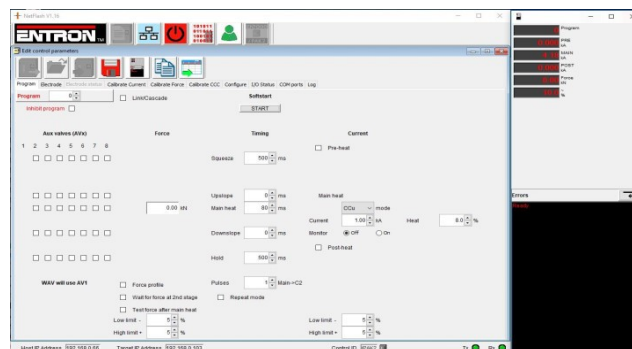
MULTIPLE PROGRAMMING OPTIONS

Feature and programming format common with EN7000

WSP3 Handheld Pendant for local programming

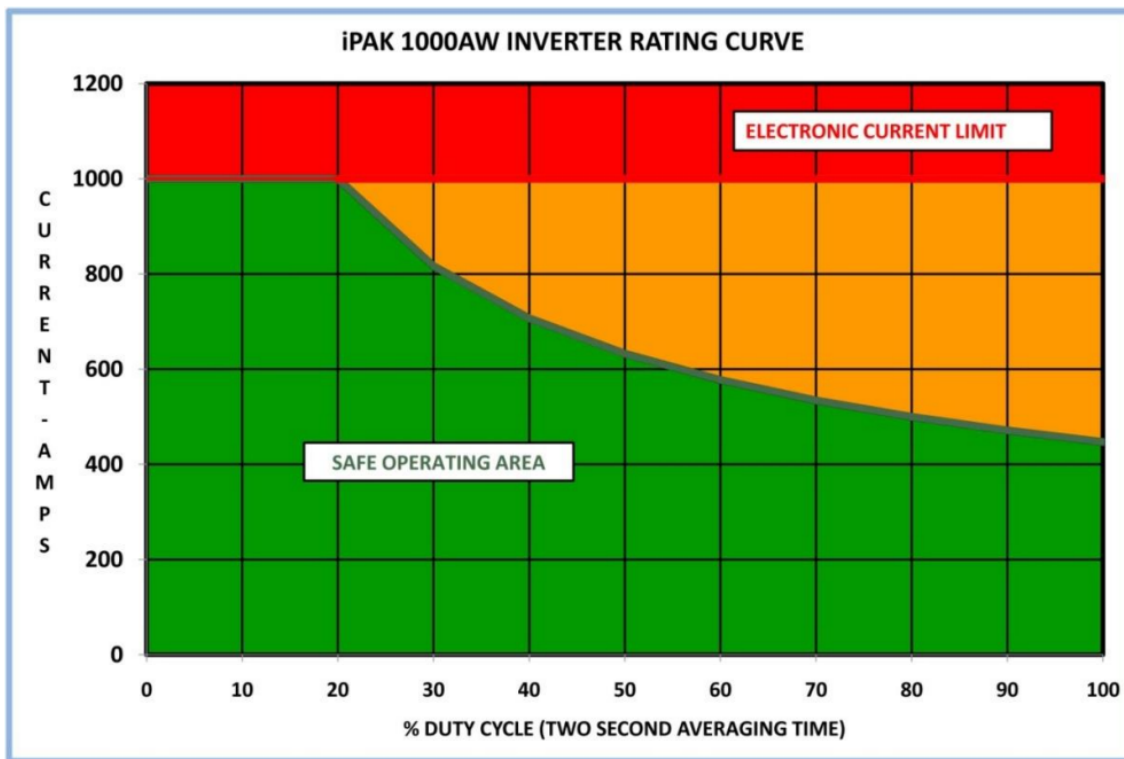


NETFLASH Software for Network Connection

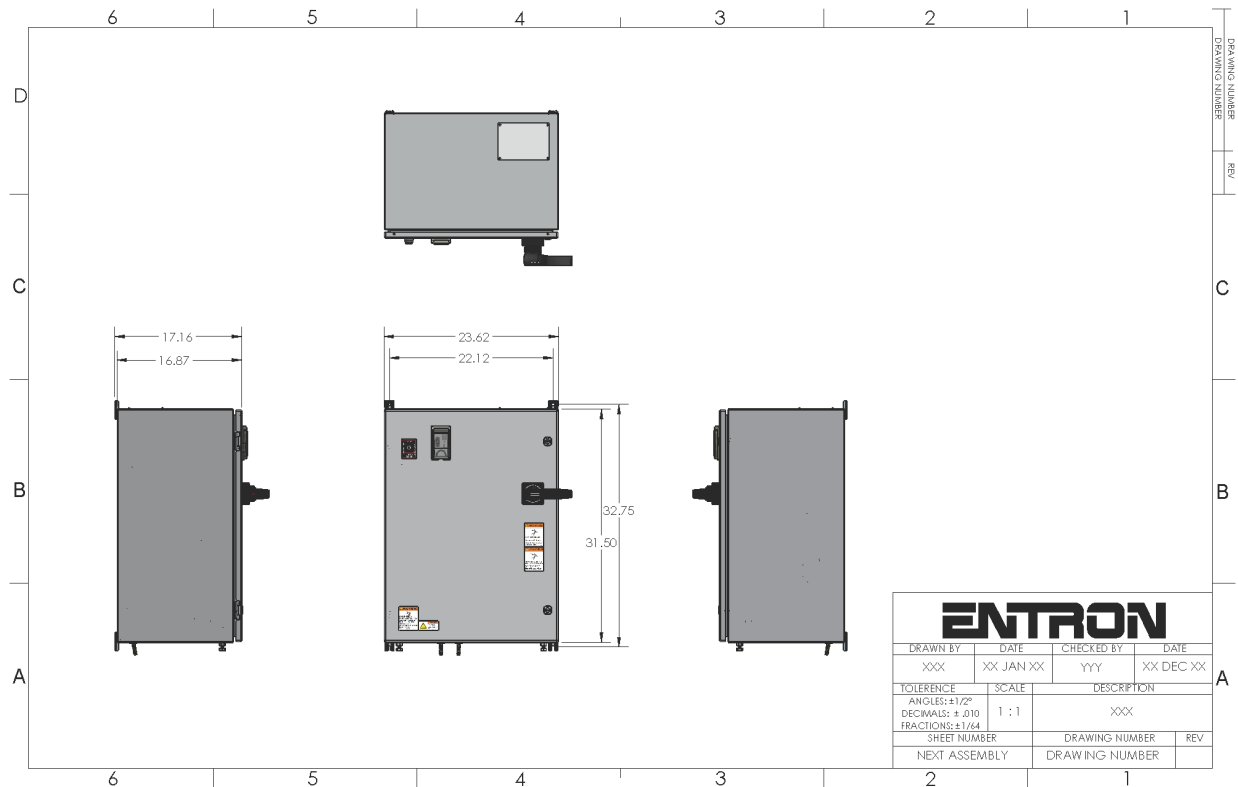


General Power Specification	
Maximum output power @ 20% Duty-cycle @ 2 seconds averaging time	650 kVA @ 480 V line voltage
Maximum line input voltage	480 V ac +10%-20%@ 50/60 Hz
Maximum output current – Limited electronically	1000 Amps
Maximum Continuous output current	447 Amps
Maximum line input current per phase	577 Amps
Continuous equivalent rms line current per phase (1000@20% duty)	258 Amps
Power Factor	Leading
Current regulation and feedback	Primary and secondary
Current regulation accuracy	± 2 %
Current regulation repeatability	± 1%
Inverter switching frequency	1 kHz
Maximum averaging time	2 seconds
Water flow rate	10 litres per minute
Maximum inlet water temperature	25 degrees centigrade

iPAK2 1000AWBv2 INVERTER RATING CURVES



Cabinet Dimensions



At ENTRON Controls we recognize that sizing the MFDC inverter for your Resistance Welding or Heating application can be challenging. Our technical support team is here to help guide you through this process.

For enquires contact our customer service team.

email:- customerservice@ENTRONcontrols.com

or

Feel free to call one of our ENTRON Control sites using one of the numbers below.

