

Medium Frequency DC constant current control and proportional force control for spot, projection and seam welding applications, up to 6000A primary current, 500,000A secondary current.



- Mounts directly to iPAK and iPAK2 inverters.
- Pendant , Modbus , NetFlash programming.

## FEATURES

- 256 weld programs (schedules).
- 3 weld Intervals — Pre-heat + Main weld + Post heat.
- Cascade / multivalve operation.
- Up to 8 transformers and 8 main valve (WAV) outputs.
- 7 auxiliary valves under program control.
- 16 Inputs/ 16 Outputs (short circuit protected). Dedicated function.
- Secondary or Primary current regulation.
- Ethernet (2 simultaneous connections).
- Ethernet/IP built-in on iPAK2v2.
- RS232 Port.
- RS485 Port.
- Analog Port connects to Proportional Valve for weld force control , or can output a measured current waveform. Can also be used for direct analog control function.
- Force profiling.
- Electrode manager (Stepper functions) for up to 8 electrodes.
- Current and force monitor.
- C-Monitor checks for secondary circuit shunt or wear conditions.
- Seam mode—change programs ‘on the fly’, up to 8 MOTOR command outputs.
- Standard features mode reduces the available options for simple applications.
- Feature and programming format common with EN7000v2 AC control.

Comparison of iPAK2 with iPAK	iPAK	iPAK2	iPAK2v2
Compatible with iPAK inverter	✓	✓	✓
Compatible with iPAK2 inverter	✓	✓	✓
Weld Programs (schedules)	64	256	256
Weld intervals	2	3	3
Duty-cycle limiter	✗	✓	✓
Real-time clock	✗	✓	✓
Data log entries	64	6144	6144
Direct MUX drive	✗	✓	✓
Analog control mode	✗	✓	✓
Safety relay	✗	✓	✓
Short circuit proof outputs	✗	✓	✓
Air-valve outputs	2	8	8
WSP3 programming	✓	✓	✓
NetFlash programming	✓	✓	✓
Ethernet TCP/IP ports	*	2	2
EtherNet/IP port	*	*	✓
RS485 ports	0	1	1
Commonality with EN7000	✗	✓	✓

\* Optional adapter required.



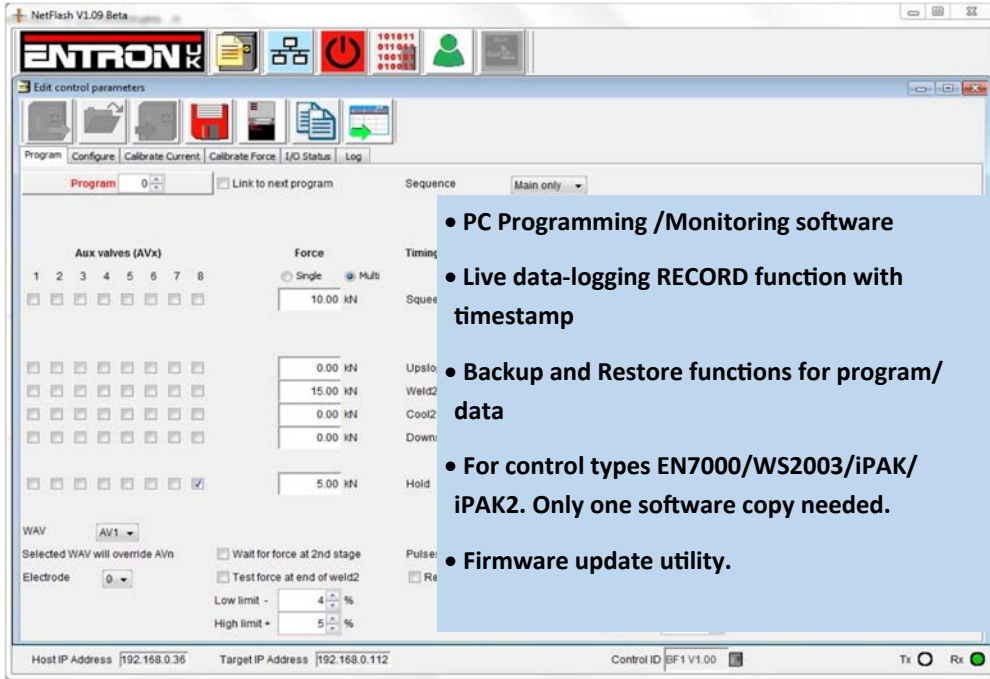
Example: Complete iPAK 600A system.



Example: Complete iPAK 600A system with 4 transformer outputs.

## NetFlash PC Software for Ethernet (option)

Easy to use Networked PC. Access iPAK, iPAK2, WS2003, EN7000.



- PC Programming /Monitoring software
- Live data-logging RECORD function with timestamp
- Backup and Restore functions for program/ data
- For control types EN7000/WS2003/iPAK/ iPAK2. Only one software copy needed.
- Firmware update utility.



## WSP3 Pendant (option)

Easy, intuitive 4 line display

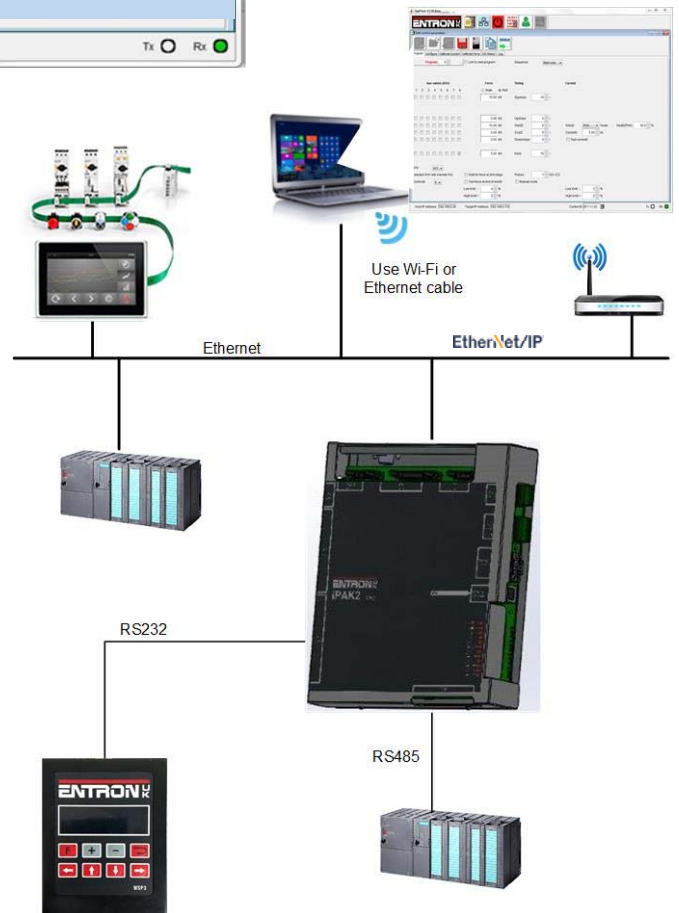
### **MULTIPLE COMMUNICATIONS SUPPORT :**

Modbus-TCP/IP (Ethernet), Modbus-RTU (RS485), RS232 all built-in. EtherNet/IP built-in on iPAK2v2.

**MULTIPLE CONTROL METHODS:** Discrete I/O plus analog 0-10V, Modbus TCP/IP (Ethernet), Modbus-RTU (RS485), EtherNet/IP.

**PROGRAMMING METHODS :** Pendant (RS232), HMI RS485 , HMI or PC software Ethernet TCP/IP, EtherNet/IP.

**DATA-LOGGING (Spot mode):** Internal data-logging up to 6000 records. Data can be recorded to hard drive through NetFlash.



BF Entron Ltd. England.  
Tel: +44 (0)1384 455401

Entron Controls LLC. USA.  
Tel: 864-416-0190

Entron Controls De Mexico.  
Tel: +52 (844) 415 9081